



Mouse Monoclonal Antibody **p21** conjugated to Sepharose Beads

CatalogNo: **ANT8148-S**

Size 200ul

Storage Store at 4 °C for frequent use

Description

This Antagene antibody is immobilized via covalent binding of primary amino groups to N-hydroxysuccinimide (NHS)-activated sepharose beads. It is useful for immunoprecipitation assays.

**p21 (ANT0037R) Rabbit mAb**

Formulation: 50% slurry in PBS pH 7.2 with 0.01mg NaN<sub>3</sub> preservative.

**Host Species**

- Rabbit
- Human,Rat,
- WB,IHC,IF,IP,ELISA

**Reactivity**

**Applications**

**MW**

- 18kD (Calculated)
- IgG,Kappa
- 18kD (Observed)

**Isotype**

## **Recommended Dilution Ratios**

Basic Information

Clonality	Monoclonal
Clone Number	ANT0037R

Immunogen Information Specificity

Endogenous

Gene name	CDKN1A CAP20 CDKN1 CIP1 MDA6 PIC1 SDI1 WAF1
Protein Name	p21

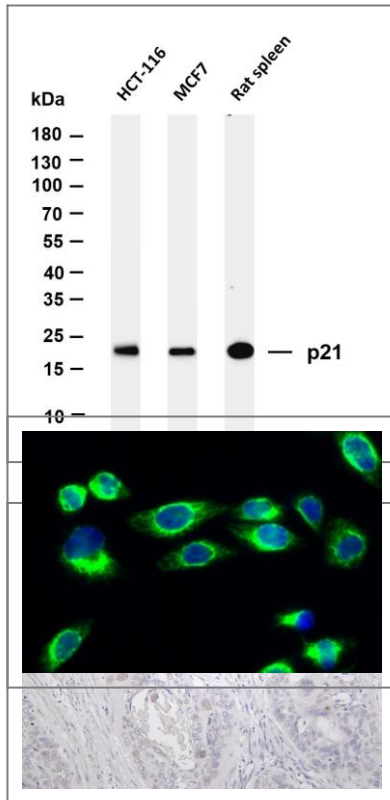
Organism	Gene ID	UniProt ID
Human	<a href="#">1026</a> ;	<a href="#">P38936</a> ;
Mouse	<a href="#">12575</a> ;	<a href="#">P39689</a> ;

Cellular Localization	Nucleus
-----------------------	---------

Tissue specificity Expressed in all adult tissues, with 5-fold lower levels observed in the brain.

Function:May be the important intermediate by which p53 mediates its role as an inhibitor of cellular proliferation in response to DNA damage. Binds to and inhibits cyclin-dependent kinase activity, preventing phosphorylation of critical cyclin-dependent kinase substrates and blocking cell cycle progression.,induction:By p53, mezerein (antileukemic compound) and interferon beta.,ANTM:Phosphorylation of Thr-145 by Akt or of Ser-146 by PKC impairs binding to PCNA.,similarity:Belongs to the CDI family.,tissue specificity:Expressed in all adult human tissues, with 5-fold lower levels observed in the brain.,

## Validation Data



Various whole cell lysates were separated by 4-20% SDS-PAGE, and the membrane was blotted with anti-p21 (ANT0037R) antibody. The HRPconjugated Goat anti-Rabbit IgG(H + L) antibody was used to detect the antibody. Lane 1: HCT-116 Lane 2: MCF7 Lane 3: Rat spleen Predicted band size: 18kDa Observed band size: 18kDa

Human cervical carcinoma was stained with Anti-p21 (ANT0037R) rabbit antibody Immunofluorescence analysis of Hela cell. 1,p21 Antibody(green) was diluted at 1:200(4° overnight). 2, Goat Anti Rabbit Alexa Fluor 488 Catalog:RS3211 was diluted at 1:1000(room temperature, 50min). 3 DAPI(blue) 10min.

For Research use only, not for diagnostics and clinical use  
Contact Antagene Inc Tel 1-866-964-2589 Email: [info@antageneinc.com](mailto:info@antageneinc.com)