



## Mouse Monoclonal Antibody **LC3B** conjugated to Sepharose Beads

CatalogNo: **ANT8147-M**

Size 200ul

Storage Store at 4 °C for frequent use

### Description

This Antagene antibody is immobilized by the covalent reaction of hydrazinonicotinamide-modified antibody with formylbenzamide-modified beads. It is useful for immunoprecipitation.

### **LC3B (ANT0035R) Rabbit mAb**

Formulation: Each vial contains 1mg/ml Magnetic Bead in PBS, pH 7.2, 0.05mg ANaN3.

#### Host Species

- Rabbit

#### Reactivity

- Human, Mouse, Rat,

#### Applications

- WB, IHC, IF, IP, ELISA

#### MW

- 14kD, 16kD (Calculated)
- 14kD, 16kD (Observed)

#### Isotype

- IgG, Kappa

## **Recommended Dilution Ratios**

### **IP**

## **Basic Information**

#### Clonality

Monoclonal

Clone Number      ANT0035R

**Immunogen Information** Specificity

Endogenous

Gene name      MAP1LC3B

Protein Name      MAP1LC3B

Organism	Gene ID	UniProt ID
Human	<a href="#">81631</a> ;	<a href="#">Q9GZQ8</a> ;
Mouse		<a href="#">Q9CQV6</a> ;

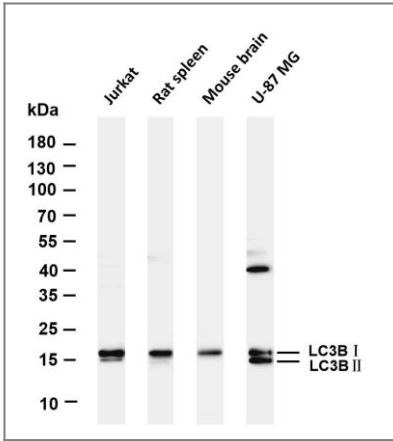
Cellular      Cytoplasm  
Localization

Tissue specificity Most abundant in heart, brain, skeletal muscle and testis. Little expression observed in liver.

Function      Caution:PubMed:12740394 has shown that the protein is cleaved at Lys-122 but PubMed:15355958 has shown that the cleavage site is at Gly-120 as in other mammalian orthologs.,Function:Probably involved in formation of autophagosomal vacuoles (autophagosomes).,ANTM:The precursor molecule is cleaved by APG4B/ATG4B to form LC3-I. This is activated by APG7L/ATG7, transferred to ATG3 and conjugated to phospholipid to form LC3-II.,similarity:Belongs to the MAP1 LC3 family.,subcellular location:LC3-II binds to the autophagic membranes.,subunit:3 different light chains, LC1, LC2 and LC3, can associate with MAP1A and MAP1B proteins.,tissue specificity:Most abundant in heart, brain, skeletal muscle and testis. Little expression observed in liver.,

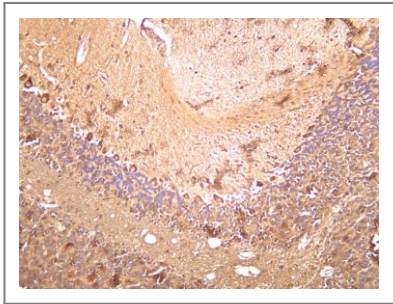


# Validation Data

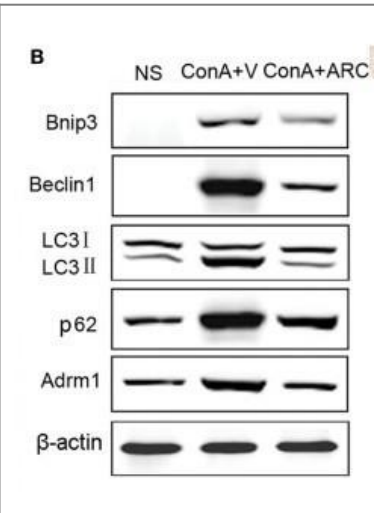
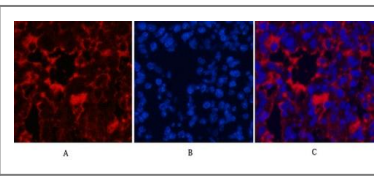
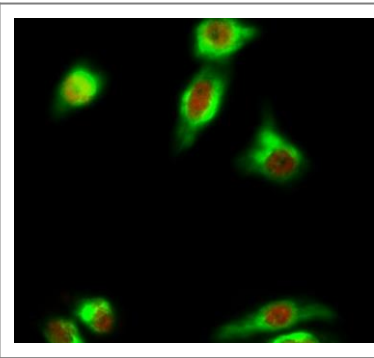
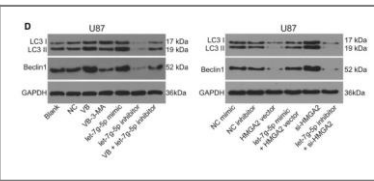
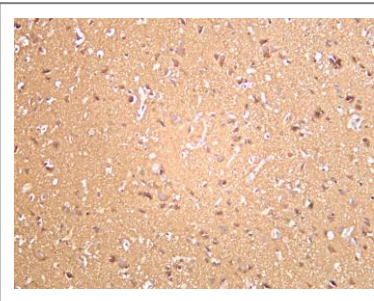
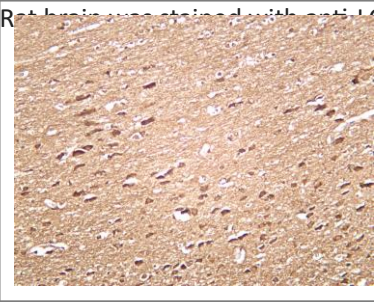


Various whole cell lysates were separated by 4-20% SDS-PAGE, and the membrane was blotted with anti-LC3B (ANT0035R) antibody. The HRPconjugated Goat anti-Rabbit IgG(H + L) antibody was used to detect the antibody. Lane 1:Jurkat Lane 2:Rat spleen Lane 3: Mouse brain Lane 3: U-87  
MG Predicted band size: 14,16kDa Observed band size: 14,16kDa

Mouse brain was stained with anti-LC3B (ANT0035R) rabbit antibody



Ret brain was stained with anti-LC3B (ANT0035R) rabbit antibody



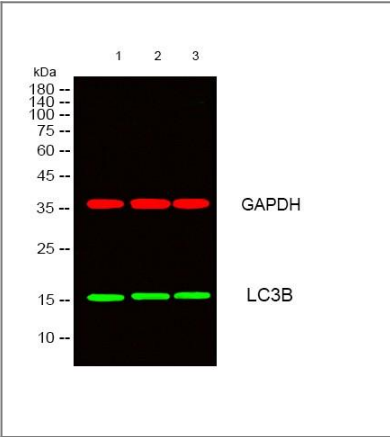
Human brain was stained with anti-LC3B (ANT0035R) rabbit antibody

Jia, Wei-Qiang, et al. "Verbascoside inhibits progression of glioblastoma cells by promoting Let-7g-5p and down-regulating HMGA2 via Wnt/beta-catenin signalling blockade." *Journal of cellular and molecular medicine* 24.5 (2020): 2901-2916.

Immunofluorescence analysis of Hela cell. 1,Cleaved-PARP-1 (D214) Antibody(red) was diluted at 1:200(4° overnight). LC3B Antibody(green) was diluted at 1:200(4° overnight). 2, Goat Anti Rabbit Alexa Fluor 594 Catalog:RS3611 was diluted at 1:1000(room temperature, 50min). Goat Anti Mouse Alexa Fluor 488 Catalog:RS3208 was diluted at 1:1000(room temperature, 50min).

Immunofluorescence analysis of Mouse-lung tissue. 1,LC3B Antibody(red) was diluted at 1:200(4°C,overnight). 2, Cy3 labeled Secondary antibody was diluted at 1:300(room temperature, 50min).3, Picture B: DAPI(blue) 10min. Picture A:Target. Picture B: DAPI. Picture C: merge of A+B

Feng, Qin. "Quantitative proteomic analysis reveals that Arctigenin alleviates concanavalin A-induced hepatitis through suppressing immune system and regulating autophagy." *Frontiers in immunology* 9 (2018): 1881.



Western blot analysis of lysates from 1) Hela, 2) 3T3, 3) Rat Brain Tissue cells, (Green) primary antibody was diluted at 1:1000, 4° over night, secondary antibody(cat:RS23920)was diluted at 1:10000, 37° 1hour. (Red) GAPDH Monoclonal Antibody(2B8) (cat:YM3029) antibody was diluted at 1:5000 as loading control, 4° over night,secondary antibody(cat:RS23710)was diluted at 1:10000, 37° 1hour.

---

For Research use only, not for diagnostics and clinical use  
Contact Antagene Inc Tel 1-866-964-2589 Email: [info@antageneinc.com](mailto:info@antageneinc.com)