



## CDK2 (ANT0033R) Rabbit mAb

CatalogNo: ANT8146 **Recombinant R**

Formulation: PBS,50%glycerol,0.05%Proclin 300,0.05%BSA  
Quantity : 100 ug/vial

### Host Species

- Rabbit
- Human,Mouse,Rat,

### Reactivity

- WB,IHC,IF,IP,ELISA

### Applications

### MW

- 34kD (Calculated)
  - IgG,Kappa
- 34kD (Observed)

### Isotype

## Recommended Dilution Ratios

IHC 1:1000-1:4000

WB 1:1000-1:5000

IF 1:200-1:1000

ELISA 1:5000-1:20000

IP 1:50-1:200,

## Storage

**Storage\*** -15°C to -25°C/1 year(Do not lower than -25°C)

## Basic Information

**Clonality** Monoclonal

**Clone Number** ANT0033R

## Immunogen Information

**Sequence** Cyclin-dependent kinase 2

Specificity

Endogenous

Target Information

Gene name

>>FoxO signaling pathway;>>Cell cycle;>>Oocyte meiosis;>>p53 signaling pathway;>>PI3K-Akt signaling pathway;>>Cellular senescence;>>Progesterone-mediated oocyte maturation;>>Cushing syndrome;>>Hepatitis C;>>Hepatitis B;>>Measles;>>Human papillomavirus infection;>>Human T-cell leukemia virus 1 infection;>>Epstein-Barr virus infection;>>Pathways in cancer;>>Viral carcinogenesis;>>Prostate cancer;>>Small cell lung cancer;>>Gastric cancer

Protein Name

CDK2

Organism	Gene ID	UniProt ID
Human	<a href="#">1017</a> ;	<a href="#">P24941</a> ;
Mouse	<a href="#">12566</a> ;	<a href="#">P97377</a> ;
Rat		<a href="#">Q63699</a> ;

Cellular Localization

Cytoplasm

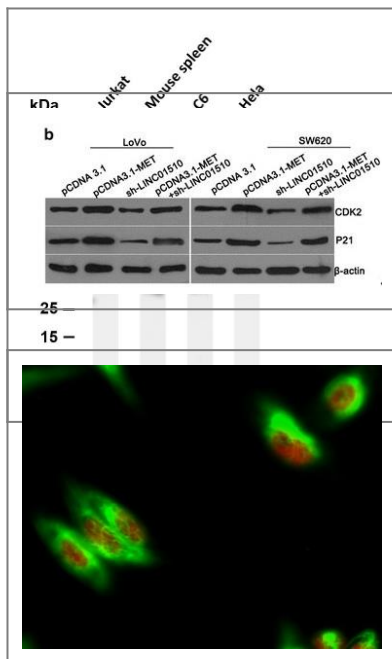
Tissue specificity

Epithelium,Lung,Placenta,

Function

Catalytic activity:ATP + a protein = ADP + a phosphoprotein.,enzyme regulation:Phosphorylation at Thr-14 or Tyr-15 inactivates the enzyme, while phosphorylation at Thr-160 activates it.,Function:Involved in the control of the cell cycle. Interacts with cyclins A, B1, B3, D, or E. Activity of CDK2 is maximal during S phase and G2.,similarity:Belongs to the protein kinase superfamily.,similarity:Belongs to the protein kinase superfamily. CMGC Ser/Thr protein kinase family. CDC2/CDKX subfamily.,similarity:Contains 1 protein kinase domain.,subunit:Found in a complex with CABLES1, CCNA1 and CCNE1. Interacts with CABLES1 (By similarity). Interacts with UHRF2. Part of a complex consisting of UHRF2, CDK2 and CCNE1. Interacts with the Speedy/Ringo proteins SPDYA and SPDYC. Found in a complex with both SPDYA and CDKN1B/KIP1.,

## Validation Data

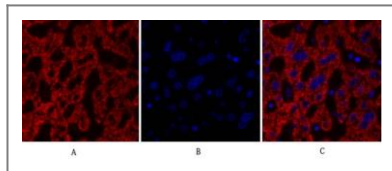


Various whole cell lysates were separated by 4-20% SDS-PAGE, and the membrane was blotted with anti-CDK2 (ANT0033R) antibody. The HRPconjugated Goat anti-Rabbit IgG(H + L) antibody was used to detect the antibody. Lane 1: Jurkat Lane 2: Mouse spleen Lane 3: C6 Lane 4: HeLa

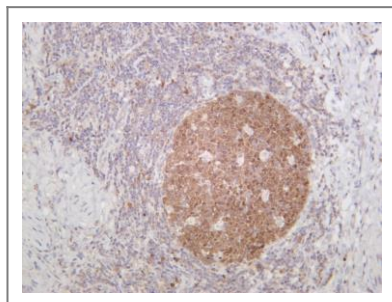
Predicted band size: 34kDa Observed band size: 34kDa

Cen, Chaoqun, et al. "Long noncoding RNA LINC01510 promotes the growth of colorectal cancer cells by modulating MET expression." Cancer cell international 18.1 (2018): 45.

Immunofluorescence analysis of HeLa cell. 1, Cdk2 Antibody(red) was diluted at 1:200(4° overnight). NSE Monoclonal Antibody(13E2)(green) was diluted at 1:200(4° overnight). 2, Goat Anti Rabbit Alexa Fluor 594 Catalog:RS3611 was diluted at 1:1000(room temperature, 50min). Goat Anti Mouse Alexa Fluor 488 Catalog:RS3208 was diluted at 1:1000(room temperature, 50min).



Immunofluorescence analysis of human-liver tissue. 1, Cdk2 Antibody(red) was diluted at 1:200(4°C, overnight). 2, Cy3 labeled Secondary antibody was diluted at 1:300(room temperature, 50min). 3, Picture B: DAPI(blue) 10min. Picture A: Target. Picture B: DAPI. Picture C: merge of A+B



Human tonsil was stained with anti-CDK2 (ANT0033R) rabbit antibody

For Research use only, not for diagnostics and clinical use  
Contact Antagene Inc Tel 1-866-964-2589 Email: [info@antageneinc.com](mailto:info@antageneinc.com)