



Mouse Monoclonal Antibody **LRP1** conjugated to Sepharose Beads

CatalogNo: **ANT8145-M**

Size 200ul

Storage Store at 4 °C for frequent use

Description

This Antagene antibody is immobilized by the covalent reaction of hydrazinonicotinamide-modified antibody with formylbenzamide-modified beads. It is useful for immunoprecipitation.

LRP1 (ANT0031R) Rabbit mAb

Formulation: Each vial contains 1mg/ml Magnetic Bead in PBS, pH 7.2, 0.05mg ANaN3.

Host Species

- Rabbit
- Human, Mouse, Rat,

Reactivity

- WB, IHC, IF, IP, ELISA

Applications

MW

- 85kD (Calculated)
 - IgG, Kappa
- 85kD (Observed)

Isotype

Recommended Dilution Ratios

IP

Basic Information

Clonality

Monoclonal

Clone Number ANT0031R

Immunogen Information Specificity

Endogenous

Gene name LRP1

Protein Name Prolow-density lipoprotein receptor-related protein 1

Organism	Gene ID	UniProt ID
Human	4035 ;	Q07954 ;
Mouse	16971 ;	Q91ZX7 ;

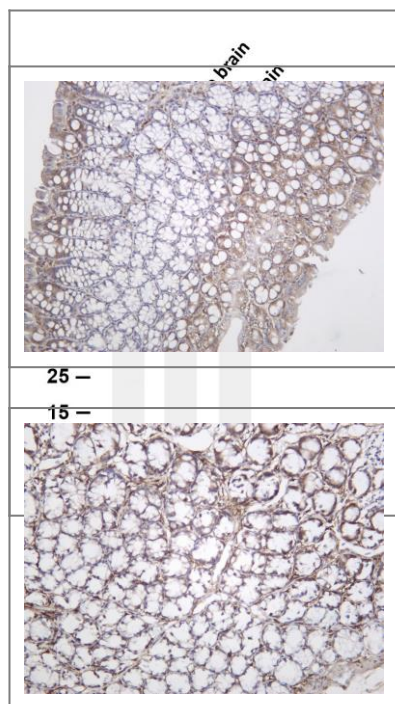
Cellular Membranous

Localization

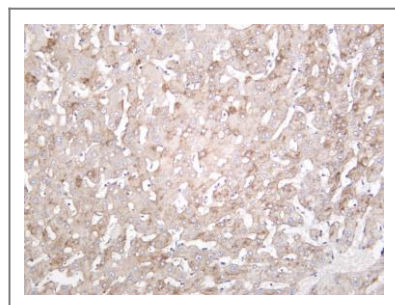
Tissue specificity Most abundant in liver, brain and lung.

Function Function:Endocytic receptor involved in endocytosis and in phagocytosis of apoptotic cells. Required for early embryonic development. Involved in cellular lipid homeostasis. Involved in the plasma clearance of chylomicron remnants and activated LRPAP1 (alpha 2macroglobulin), as well as the local metabolism of complexes between plasminogen activators and their endogenous inhibitors. May modulate cellular events, such as APP metabolism, kinase-dependent intracellular signaling, neuronal calcium signaling as well as neurotransmission.,ANTM:Cleaved into a 85 kDa membrane-spanning subunit (LRP-85) and a 515 kDa large extracellular domain (LRP-515) that remains non-covalently associated. Gamma-secretase-dependent cleavage of LRP-85 releases the intracellular domain from the membrane.,PTM:Phosphorylated on serine and threonine residues.,PTM:Phosphorylated on tyrosine residues upon stimulation with PDGF. Tyrosine phosphorylation promotes interaction with SHC1.,PTM:The N-terminus is blocked.,similarity:Belongs to the LDLR family.,similarity:Contains 22 EGF-like domains.,similarity:Contains 31 LDL-receptor class A domains.,similarity:Contains 34 LDL-receptor class B repeats.,subcellular location:After cleavage, the intracellular domain (LRPICD) is detected both in the cytoplasm and in the nucleus.,subunit:Heterodimer of an 85-kDa membrane-bound carboxyl subunit and a noncovalently attached 515-kDa amino-terminal subunit. Intracellular domain interacts with MAFB (By similarity). Found in a complex with PID1/PCLI1, LRP1 and CUBNI. Interacts with SNX17, PID1/PCLI1, PDGF and CUBN. The intracellular domain interacts with SHC1, GULP1 and DAB1. Interacts with LRPAP1.,tissue specificity:Most abundant in liver, brain and lung.,

Validation Data



Various whole cell lysates were separated by 4-20% SDS-PAGE, and the membrane was blotted with anti-LRP1 (ANT0031R) antibody. The HRPconjugated Goat anti-Rabbit IgG(H + L) antibody was used to detect the antibody. Lane 1: A549 Lane 2: Mouse brain Lane 3: Rat brain Predicted band size: 85kDa Observed band size: 85kDa
 Mouse colon was stained with Anti-LRP1 (ANT0031R) rabbit antibody



Human liver was stained with Anti-LRP1 (ANT0031R) rabbit antibody

For Research use only, not for diagnostics and clinical use
Contact Antagene Inc Tel 1-866-964-2589 Email: info@antageneinc.com