



Mouse Monoclonal Antibody **c-Myc** conjugated to Sepharose Beads

CatalogNo: **ANT8143-S**

Size 200ul

Storage Store at 4 °C for frequent use

Description

This Antagene antibody is immobilized via covalent binding of primary amino groups to N-hydroxysuccinimide (NHS)-activated sepharose beads. It is useful for immunoprecipitation assays.

c-Myc (ANT0028R) Rabbit mAb

Formulation: 50% slurry in PBS pH 7.2 with 0.01mg NaN₃ preservative.

Host Species

- Rabbit
- Human, Mouse, Rat,

Reactivity

- WB, IHC, IF, IP, ELISA

Applications

MW

- 48kD (Calculated)
- IgG, Kappa
- 60kD (Observed)

Isotype

Recommended Dilution Ratios

IP

Basic Information

Clonality

Monoclonal

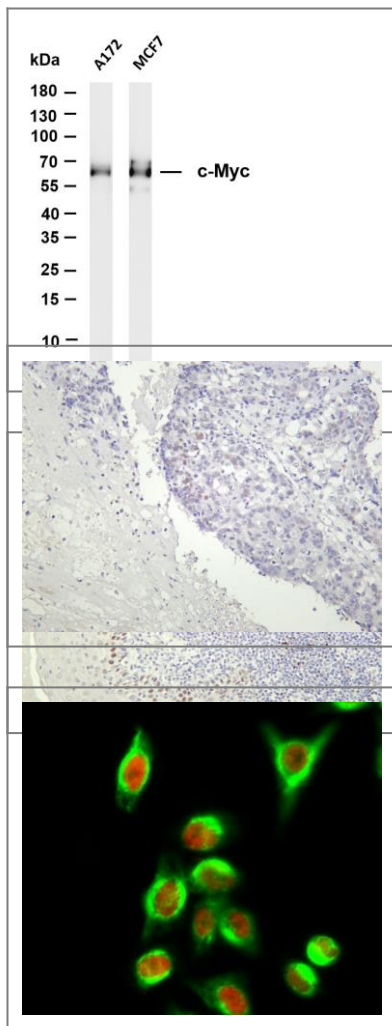
Clone Number ANT0028R

Immunogen Information Specificity

Endogenous

Gene name	MYC BHLHE39												
Protein Name	Myc proto-oncogene protein (Class E basic helix-loop-helix protein 39) (bHLHe39) (Protooncogene c-Myc) (Transcription factor p64)												
	<table><tr><th>Organism</th><th>Gene ID</th><th>UniProt ID</th></tr><tr><td>Human</td><td>4609;</td><td>P01106;</td></tr><tr><td>Mouse</td><td>17869;</td><td>P01108;</td></tr><tr><td>Rat</td><td>24577;</td><td>P09416;</td></tr></table>	Organism	Gene ID	UniProt ID	Human	4609 ;	P01106 ;	Mouse	17869 ;	P01108 ;	Rat	24577 ;	P09416 ;
Organism	Gene ID	UniProt ID											
Human	4609 ;	P01106 ;											
Mouse	17869 ;	P01108 ;											
Rat	24577 ;	P09416 ;											
Cellular Localization	Nucleus												
Function	Disease:A chromosomal aberration involving MYC may be a cause of a form of B-cell chronic lymphocytic leukemia. Translocation t(8;12)(q24;q22) with BTG1.,Disease:Overexpression of MYC is implicated in the etiology of a variety of hematopoietic tumors.,Function:Participates in the regulation of gene transcription. Binds DNA both in a non-specific manner and also specifically to recognizes the core sequence 5'-CAC[GA]TG-3'. Seems to activate the transcription of growth-related genes.,online information:Myc entry,ANTM:Phosphorylated by PRKDC.,similarity:Contains 1 basic helix-loop-helix (bHLH) domain.,subunit:Efficient DNA binding requires dimerization with another bHLH protein. Binds DNA as a heterodimer with MAX. Interacts with TAF1C and SPAG9. Interacts with PARP10. Interacts with KDM5A and KDM5B.,												

Validation Data



Various whole cell lysates were separated by 4-20% SDS-PAGE, and the membrane was blotted with anti-c-Myc (ANT0028R) antibody. The HRPconjugated Goat anti-Rabbit IgG(H + L) antibody was used to detect the antibody. Lane 1: A172 Lane 2: MCF7 Predicted band size: 48kDa Observed band size: 60kDa

Human tonsil was stained with Anti-c-Myc (ANT0028R) rabbit antibody
Human lung was stained with Anti-c-Myc (ANT0028R) rabbit antibody

Immunofluorescence analysis of HeLa cell. 1, c-Myc Antibody (red) was diluted at 1:200 (4° overnight). CY5 Monoclonal Antibody (4B10) (green) was diluted at 1:200 (4° overnight). 2, Goat Anti Rabbit Alexa Fluor 594 Catalog: RS3611 was diluted at 1:1000 (room temperature, 50min). Goat Anti Mouse Alexa Fluor 488 Catalog: RS3208 was diluted at 1:1000 (room temperature, 50min).

For Research use only, not for diagnostics and clinical use
Contact Antagene Inc Tel 1-866-964-2589 Email: info@antageneinc.com