



Mouse Monoclonal Antibody **Bad** conjugated to Sepharose Beads

CatalogNo: **ANT8140-S**

Size 200ul

Storage Store at 4 °C for frequent use

Description

This Antagene antibody is immobilized via covalent binding of primary amino groups to N-hydroxysuccinimide (NHS)-activated sepharose beads. It is useful for immunoprecipitation assays.

Bad (ANT0019R) Rabbit mAb

Formulation: 50% slurry in PBS pH 7.2 with 0.01mg NaN₃ preservative.

Host Species

- Rabbit
- Human, Mouse, Rat,

Reactivity

- WB, IHC, IF, IP, ELISA

Applications

MW

- 18kD (Calculated)
 - IgG, Kappa
- 23kD (Observed)

Isotype

Recommended Dilution Ratios

IP

Basic Information

Clonality Monoclonal

Clone Number ANT0019R

Immunogen Information

Sequence Bcl2 antagonist of cell death

Specificity Endogenous

Target Information

Gene name >>EGFR tyrosine kinase inhibitor resistance;>>Endocrine resistance;>>Platinum drug resistance;>>ErbB signaling pathway;>>Ras signaling pathway;>>cGMP-PKG signaling pathway;>>cAMP signaling pathway;>>Chemokine signaling pathway;>>Autophagy animal;>>PI3K-Akt signaling pathway;>>Apoptosis;>>VEGF signaling pathway;>>Focal adhesion;>>Neurotrophin signaling pathway;>>Insulin signaling pathway;>>Thyroid hormone signaling pathway;>>Alzheimer disease;>>Amyotrophic lateral sclerosis;>>Prion disease;>>Pathways of neurodegeneration - multiple diseases;>>Toxoplasmosis;>>Tuberculosis;>>Hepatitis C;>>Hepatitis B;>>Measles;>>Human papillomavirus infection;>>Herpes simplex virus 1 infection;>>Human immunodeficiency virus 1 infection;>>Pathways in cancer;>>Viral carcinogenesis;>>Chemical carcinogenesis - receptor activation;>>Chemical carcinogenesis - reactive oxygen species;>>Colorectal cancer;>>Renal cell carcinoma;>>Pancreatic cancer;>>Endometrial cancer;>>Prostate cancer;>>Melanoma;>>Chronic myeloid leukemia;>>Acute myeloid leukemia;>>Nonsmall cell lung cancer;>>Hepatocellular carcinoma;>>Lipid and atherosclerosis

Protein Name BAD

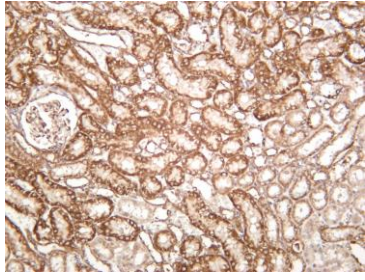
Organism	Gene ID	UniProt ID
Human	572;	Q92934;
Mouse	12015;	Q61337;
Rat	64639;	O35147;

Cellular Localization Cytoplasm

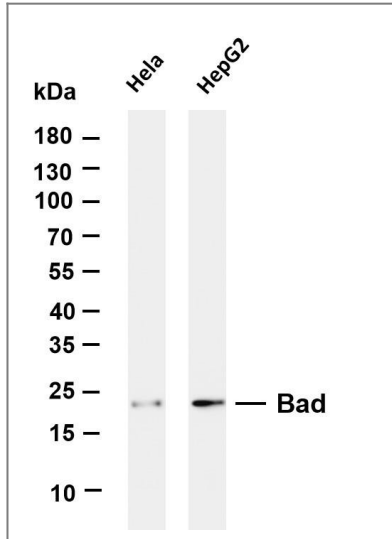
Tissue specificity Expressed in a wide variety of tissues.

Function Domain: Intact BH3 motif is required by BIK, BID, BAK, BAD and BAX for their pro-apoptotic activity and for their interaction with anti-apoptotic members of the Bcl-2 family.,Function: Promotes cell death. Successfully competes for the binding to Bcl-X(L), Bcl-2 and Bcl-W, thereby affecting the level of heterodimerization of these proteins with BAX. Can reverse the death repressor activity of Bcl-X(L), but not that of Bcl-2 (By similarity). Appears to act as a link between growth factor receptor signaling and the apoptotic pathways.,online information: Bcl 2-associated death promoter entry,ANTM: Phosphorylated on one or more of Ser-75, Ser-99, Ser-118 and Ser-134 in response to survival stimuli, which blocks its pro-apoptotic activity. Phosphorylation on Ser-99 or Ser-75 promotes heterodimerization with 14-3-3 proteins. This interaction then facilitates the phosphorylation at Ser-118, a site within the BH3 motif, leading to the release of Bcl-X(L) and the promotion of cell survival. Ser-99 is the major site of AKT/PKB phosphorylation, Ser-118 the major site of protein kinase A (CAPK) phosphorylation.,similarity: Belongs to the Bcl-2 family.,subcellular location: Upon phosphorylation, locates to the cytoplasm.,subunit: Forms heterodimers with the antiapoptotic proteins, Bcl-X(L), Bcl-2 and Bcl-W. Also binds protein S100A10 (By similarity). The Ser-75/Ser-99 phosphorylated form binds 14-3-3 proteins.,tissue specificity: Expressed in a wide variety of tissues.,

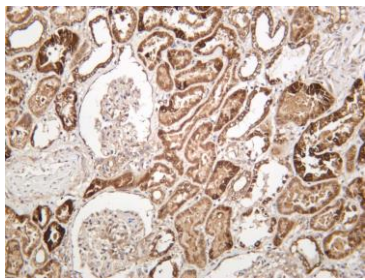
Validation Data



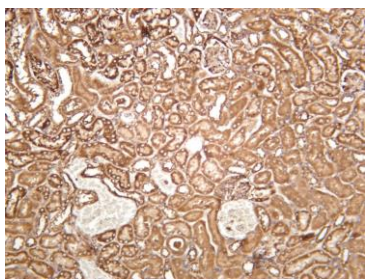
Rat kidney was stained with anti-Bad (ANT0019R) rabbit antibody



Various whole cell lysates were separated by 4-20% SDS-PAGE, and the membrane was blotted with anti-Bad (ANT0019R) antibody. The HRPconjugated Goat anti-Rabbit IgG(H + L) antibody was used to detect the antibody. Lane 1: HeLa Lane 2: HepG2 Predicted band size: 18kDa Observed band size: 23kDa



Human kidney was stained with anti-Bad (ANT0019R) rabbit antibody



Mouse kidney was stained with anti-Bad (ANT0019R) rabbit antibody