



Mouse Monoclonal Antibody **AREB6** conjugated to Sepharose Beads

CatalogNo: **ANT8138-S**

Size 200ul

Storage Store at 4 °C for frequent use

Description

This Antagene antibody is immobilized via covalent binding of primary amino groups to N-hydroxysuccinimide (NHS)-activated sepharose beads. It is useful for immunoprecipitation assays.

AREB6 (ANT0016R) Rabbit mAb

Formulation: 50% slurry in PBS pH 7.2 with 0.01mg NaN₃ preservative.

Host Species

- Rabbit

MW

- 124kD (Calculated)
- 200kD (Observed)

Reactivity

- Human,Rat,

Isotype

- IgG,Kappa

Applications

- WB,IHC,IF,IP,ELISA

Recommended Dilution Ratios

IP

Basic Information

Clonality

Monoclonal

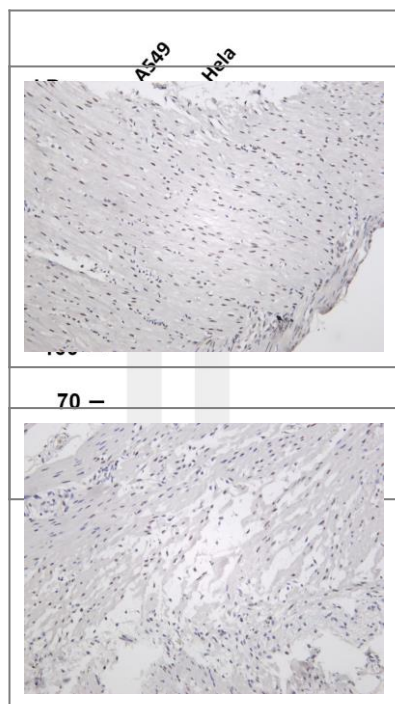
Clone Number ANT0016R

Immunogen Information Specificity

Endogenous

| | | | |
|-----------------------|--|-----------------------|-------------------------|
| Gene name | ZEB1 AREB6 TCF8 | | |
| Protein Name | Zinc finger E-box-binding homeobox 1 (NIL-2-A zinc finger protein) (Negative regulator of IL2) (Transcription factor 8) (TCF-8) | | |
| | Organism | Gene ID | UniProt ID |
| | Human | 6935; | P37275; |
| | Mouse | | Q64318; |
| | Rat | | Q62947; |
| Cellular Localization | Nucleus | | |
| Tissue specificity | Colocalizes with SMARCA4/BRG1 in E-cadherin-negative cells from established lines, and stroma of normal colon as well as in de-differentiated epithelial cells at the invasion front of colorectal carcinomas (at protein level). Expressed in heart and skeletal muscle, but not in liver, spleen, or pancreas. | | |
| Function | Disease:Defects in ZEB1 are the cause of posterior polymorphous corneal dystrophy type 3 (PPCD3) [MIM:609141]. Posterior polymorphous corneal dystrophy (PPCD) is a rare disease involving metaplasia and overgrowth of corneal endothelial cells. In patients with PPCD, these cells manifest in an epithelial morphology and gene expression pattern, produce an aberrant basement membrane, and, sometimes, spread over the iris and nearby structures in a way that increases the risk for glaucoma.,Function:Inhibits interleukin-2 (IL-2) gene expression. May be responsible for transcriptional repression of the IL-2 gene. Enhances or represses the promoter activity of the ATP1A1 gene depending on the quantity of cDNA and on the cell type.,similarity:Belongs to the delta-EF1/ZFH-1 C2H2-type zinc-finger family.,similarity:Contains 1 homeobox DNA-binding domain.,similarity:Contains 7 C2H2type zinc fingers.,tissue specificity:Expressed in heart and skeletal muscle, but not in liver, spleen, or pancreas., | | |

Validation Data



Various whole cell lysates were separated by 4-8% SDS-PAGE, and the membrane was blotted with anti-ZEB1 (ANT0016R) antibody. The HRPconjugated Goat anti-Rabbit IgG(H + L) antibody was used to detect the antibody. Lane 1: A459 Lane 2: Hela Predicted band size: 124kDa Observed band size: 200kDa

Rat colon was stained with Anti-ZEB1 (ANT0016R) rabbit antibody

Human colon was stained with Anti-ZEB1 (ANT0016R) rabbit antibody

For Research use only, not for diagnostics and clinical use
Contact Antagene Inc Tel 1-866-964-2589 Email: info@antageneinc.com