



## Mouse Monoclonal Antibody **KDM1A** conjugated to Sepharose Beads

CatalogNo: **ANT8137-M**

Size 200ul

Storage Store at 4 °C for frequent use

### Description

This Antagene antibody is immobilized by the covalent reaction of hydrazinonicotinamide-modified antibody with formylbenzamide-modified beads. It is useful for immunoprecipitation.

### **KDM1A (ANT0015R) Rabbit mAb**

Formulation: Each vial contains 1mg/ml Magnetic Bead in PBS, pH 7.2, 0.05mg ANaN3.

#### Host Species

- Rabbit
- Human, Mouse, Rat,

#### Reactivity

- WB, IHC, IF, IP, ELISA

#### Applications

#### MW

- 93kD (Calculated)
- 110kD (Observed)
- IgG, Kappa

#### Isotype

## Recommended Dilution Ratios

### IP

### Basic Information

Clonality	Monoclonal
Clone Number	ANT0015R

# Immunogen Information Specificity

Endogenous

Gene name KDM1A AOF2 KDM1 KIAA0601 LSD1

Protein Name LSD1 (Ser131)

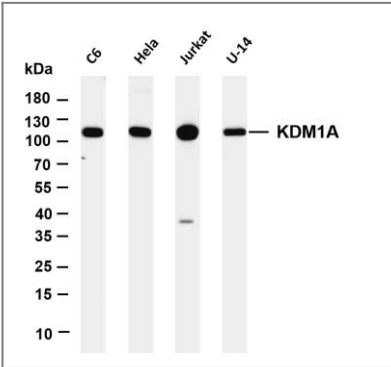
Organism	Gene ID	UniProt ID
Human	<a href="#">23028;</a>	<a href="#">O60341;</a>
Mouse	<a href="#">99982;</a>	<a href="#">Q6ZQ88;</a>

Cellular Localization Nucleus

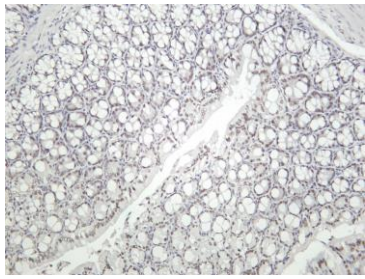
Tissue specificity Ubiquitously expressed.

**Function** cofactor:FAD.,Domain:The SWIRM domain may act as an anchor site for a histone tail.,Function:Histone demethylase that demethylates 'Lys-4' of histone H3, a specific tag for epigenetic transcriptional activation, thereby acting as a corepressor. Acts by oxidizing the substrate by FAD to generate the corresponding imine that is subsequently hydrolyzed. Demethylates both mono- and di-methylated 'Lys-4' of histone H3. May play a role in the repression of neuronal genes. Alone, it is unable to demethylate H3 'Lys-4' on nucleosomes and requires the presence of RCOR1/CoREST to achieve such activity. May also demethylate 'Lys-9' of histone H3, a specific tag for epigenetic transcriptional repression, thereby leading to derepression of androgen receptor target genes. Demethylates di-methylated 'Lys-370' of p53/TP53 which prevents interaction of p53/TP53 with TP53BP1 and represses p53/TP53mediated transcriptional activation. Demethylates and stabilizes the DNA methylase DNMT1. Required for gastrulation during embryogenesis.,similarity:Belongs to the flavin monoamine oxidase family.,similarity:Contains 1 SWIRM domain.,subunit:Component of a BHC histone deacetylase complex that contains HDAC1, HDAC2, HMG20B/BRAF35, KDM1, RCOR1/CoREST and PHF21A/BHC80. The BHC complex may also contain ZMYM2, ZNF217, ZMYM3, GSE1 and GTF2I. In the complex, RCOR1/CoREST strongly enhances the demethylase activity and protects it from the proteasome while PHF21A/BHC80 inhibits the demethylase activity. Interacts with the androgen receptor (AR).,tissue specificity:Ubiquitously expressed.,

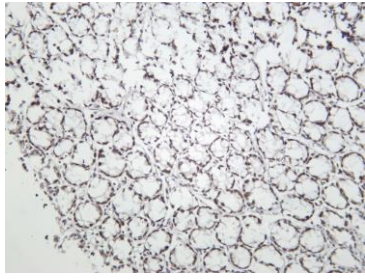
## Validation Data



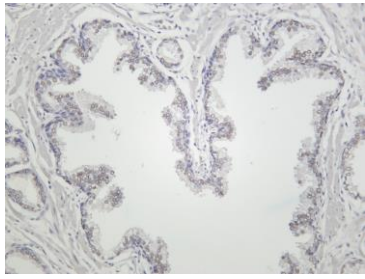
Various whole cell lysates were separated by 4-20% SDS-PAGE, and the membrane was blotted with anti-KDM1A (ANT0015R) antibody. The HRPconjugated Goat anti-Rabbit IgG(H + L) antibody was used to detect the antibody. Lane 1: C6 Lane 2: HeLa Lane 3: Jurkat Lane 4: U-14 Predicted band size: 93kDa Observed band size: 110kDa



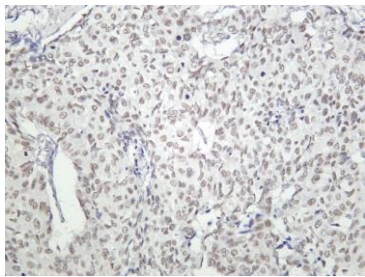
Mouse colon was stained with Anti-KDM1A (ANT0015R) rabbit antibody



Rat colon was stained with Anti-KDM1A (ANT0015R) rabbit antibody



Human prostate was stained with Anti-KDM1A (ANT0015R) rabbit antibody



Human prostate carcinoma was stained with Anti-KDM1A (ANT0015R) rabbit antibody

For Research use only, not for diagnostics and clinical use  
Contact Antagene Inc Tel 1-866-964-2589 Email: [info@antageneinc.com](mailto:info@antageneinc.com)