



Mouse Monoclonal Antibody **CD3** conjugated to Sepharose Beads

CatalogNo: **ANT8134-S**

Size 200ul

Storage Store at 4 °C for frequent use

Description

This Antagene antibody is immobilized via covalent binding of primary amino groups to N-hydroxysuccinimide (NHS)-activated sepharose beads. It is useful for immunoprecipitation assays.

CD3 (ANT0012R) Rabbit mAb

Formulation: 50% slurry in PBS pH 7.2 with 0.01mg NaN₃ preservative.

Host Species

- Rabbit
- Human, Mouse, Rat,

Reactivity

- WB, IHC, IF, IP, ELISA

Applications

MW

- 23kD (Calculated)
 - IgG, Kappa
- 23kD (Observed)

Isotype

Recommended Dilution Ratios

IP

Basic Information

Clonality

Monoclonal

Clone Number ANT0012R

Immunogen Information Specificity

Endogenous

Gene name CD3E T3E

Protein Name CD3, CD3E

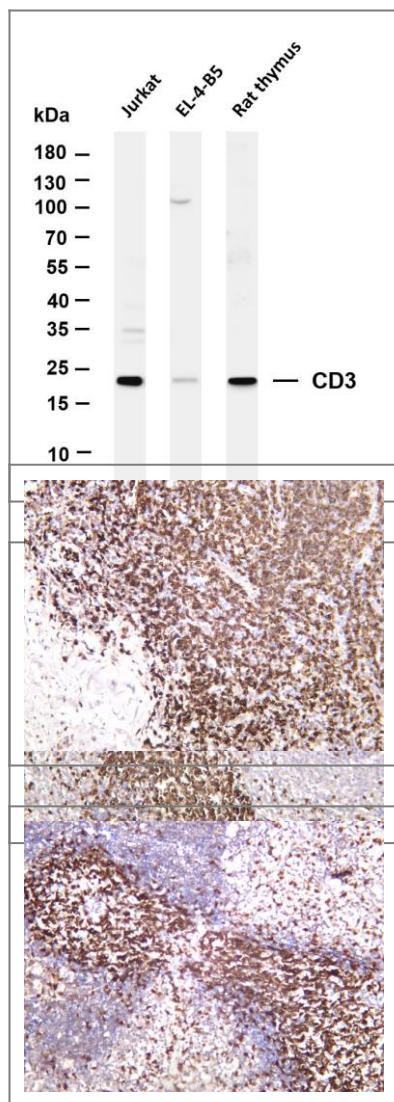
| | Organism | Gene ID | UniProt ID |
|--|----------|-----------------------|--------------------------|
| | Human | 916 ; | P07766 ; |

Cellular
Localization Membranous

Tissue specificity Membranous

Function Function:The CD3 complex mediates signal transduction.,online information:CD3E mutation db,similarity:Contains 1 Ig-like (immunoglobulin-like) domain.,similarity:Contains 1 ITAM domain.,subunit:The TCR/CD3 complex of T-lymphocytes consists of either a TCR alpha/beta or TCR gamma/delta heterodimer coexpressed at the cell surface with the invariant subunits of CD3 labeled gamma, delta, epsilon, zeta, and eta.,

Validation Data



Various whole cell lysates were separated by 4-20% SDS-PAGE, and the membrane was blotted with anti-CD3 (ANT0012R) antibody. The HRPconjugated Goat anti-Rabbit IgG(H + L) antibody was used to detect the antibody. Lane 1: Jurkat Lane 2: EL-4-B5 Lane 3: Rat thymus Predicted band size: 23kDa Observed band size: 23kDa

Rat spleen was stained with anti-CD3 (ANT0012R) rabbit antibody
Human tonsil was stained with anti-CD3 (ANT0012R) rabbit antibody

Mouse spleen was stained with anti-CD3 (ANT0012R) rabbit antibody

For Research use only, not for diagnostics and clinical use
Contact Antagene Inc Tel 1-866-964-2589 Email: info@antageneinc.com