



Mouse Monoclonal Antibody **CD3** conjugated to Sepharose Beads

CatalogNo: **ANT8134-M**

Size 200ul

Storage Store at 4 °C for frequent use

#### Description

This Antagene antibody is immobilized by the covalent reaction of hydrazinonicotinamide-modified antibody with formylbenzamide-modified beads. It is useful for immunoprecipitation.

**CD3 (ANT0012R) Rabbit mAb**

Formulation: Each vial contains 1mg/ml Magnetic Bead in PBS, pH 7.2, 0.05mg ANaN3.

#### Host Species

- Rabbit
- Human, Mouse, Rat,

#### Reactivity

- WB, IHC, IF, IP, ELISA

#### Applications

#### MW

- 23kD (Calculated)
  - IgG, Kappa
- 23kD (Observed)

#### Isotype

## Recommended Dilution Ratios

### IP

## Basic Information

#### Clonality

Monoclonal

Clone Number      ANT0012R

**Immunogen Information** Specificity

Endogenous

Gene name      CD3E T3E

Protein Name      CD3, CD3E

	Organism	Gene ID	UniProt ID
	Human	<a href="#">916</a> ;	<a href="#">P07766</a> ;

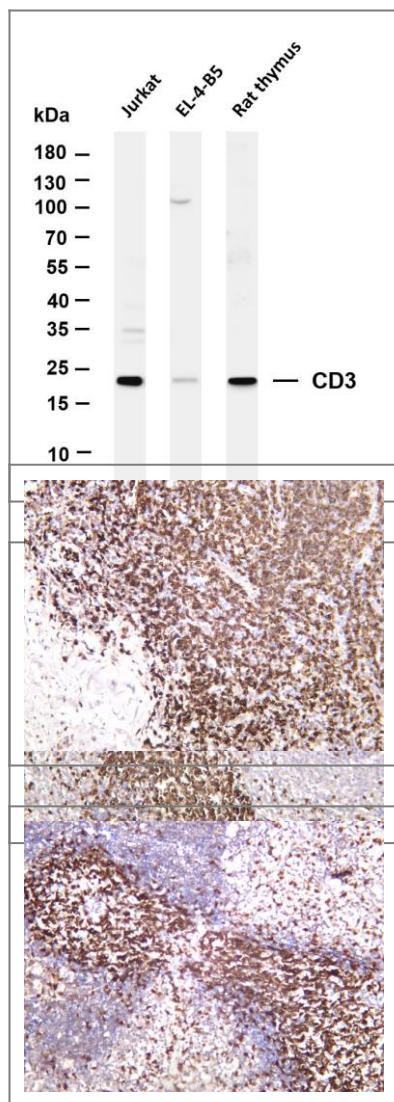
Cellular  
Localization      Membranous

Tissue specificity      Membranous

Function      Function:The CD3 complex mediates signal transduction.,online information:CD3E mutation db,similarity:Contains 1 Ig-like (immunoglobulin-like) domain.,similarity:Contains 1 ITAM domain.,subunit:The TCR/CD3 complex of T-lymphocytes consists of either a TCR alpha/beta or TCR gamma/delta heterodimer coexpressed at the cell surface with the invariant subunits of CD3 labeled gamma, delta, epsilon, zeta, and eta.,

---

## Validation Data



Various whole cell lysates were separated by 4-20% SDS-PAGE, and the membrane was blotted with anti-CD3 (ANT0012R) antibody. The HRPconjugated Goat anti-Rabbit IgG(H + L) antibody was used to detect the antibody. Lane 1:Jurkat Lane 2: EL-4-B5 Lane 3: Rat thymus Predicted band size: 23kDa Observed band size: 23kDa

Rat spleen was stained with anti-CD3 (ANT0012R) rabbit antibody  
Human tonsil was stained with anti-CD3 (ANT0012R) rabbit antibody

Mouse spleen was stained with anti-CD3 (ANT0012R) rabbit antibody

For Research use only, not for diagnostics and clinical use  
Contact Antagene Inc Tel 1-866-964-2589 Email: [info@antageneinc.com](mailto:info@antageneinc.com)