



Mouse Monoclonal Antibody **Carbonic Anhydrase 9** conjugated to Sepharose Beads

CatalogNo: **ANT8132-S**

Size 200ul

Storage Store at 4 °C for frequent use

### Description

This Antagene antibody is immobilized via covalent binding of primary amino groups to N-hydroxysuccinimide (NHS)-activated sepharose beads. It is useful for immunoprecipitation assays.

**Carbonic Anhydrase 9 (ANT0009R) Rabbit mAb**

Formulation: 50% slurry in PBS pH 7.2 with 0.01mg NaN<sub>3</sub> preservative.

### Host Species

- Rabbit
- Human, Mouse, Rat,

### Reactivity

- WB, IHC, IF, IP, ELISA

### Applications

### MW

- 49kD (Calculated)
- 49kD (Observed)
- IgG, Kappa

### Isotype

## Recommended Dilution Ratios

### IP

## Basic Information

### Clonality

Monoclonal

Immunogen Information

Specificity

Endogenous

Gene name

CA9

Protein Name

Carbonic anhydrase 9

Organism	Gene ID	UniProt ID
Human	<a href="#">768</a> ;	<a href="#">Q16790</a> ;
Mouse	<a href="#">230099</a> ;	<a href="#">Q8VHB5</a> ;

Cellular

Membranous

Localization

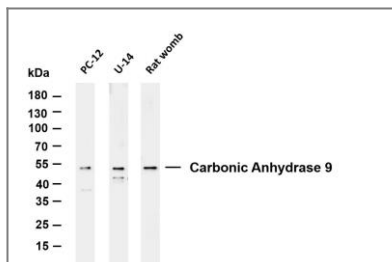
Tissue specificity

Expressed primarily in carcinoma cells lines. Expression is restricted to very few normal tissues and the most abundant expression is found in the epithelial cells of gastric mucosa.

Function

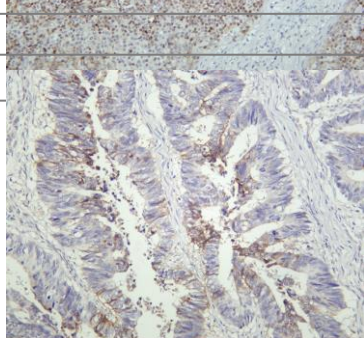
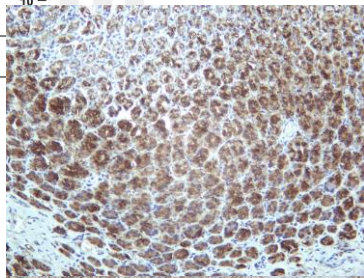
Catalytic activity: $\text{H(2)CO(3)} = \text{CO(2)} + \text{H(2)O}$ .,cofactor:Zinc.,Function:Reversible hydration of carbon dioxide. Participates in pH regulation. May be involved in the control of cell proliferation and transformation. Appears to be a novel specific biomarker for a cervical neoplasia.,induction:By hypoxia.,ANTM:Asn-346 bears high-mannose type glycan structures.,similarity:Belongs to the alpha-carbonic anhydrase family.,subcellular location:Found on the surface microvilli and in the nucleus, particularly in nucleolus.,subunit:Forms oligomers linked by disulfide bonds.,tissue specificity:Expressed primarily in carcinoma cells lines. Expression is restricted to very few normal tissues and the most abundant expression is found in the epithelial cells of gastric mucosa.,

## Validation Data

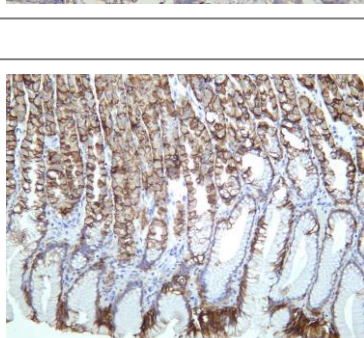


Various whole cell lysates were separated by 4-20% SDS-PAGE, and the membrane was blotted with anti-Carbonic Anhydrase 9 (ANT0009R) antibody. The HRP-conjugated Goat anti-Rabbit IgG(H + L) antibody was used to detect the antibody. Lane 1: PC-12 Lane 2: U-14 Lane 3: Rat womb Predicted band size: 49kDa Observed band size: 49kDa

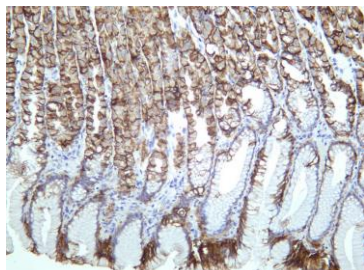
Human tonsil was stained with Anti-Carbonic Anhydrase 9 (ANT0009R) rabbit antibody  
Rat stomach was stained with Anti-Carbonic Anhydrase 9 (ANT0009R) rabbit antibody



Human colon carcinoma was stained with Anti-Carbonic Anhydrase 9 (ANT0009R) rabbit antibody



Human stomach was stained with Anti-Carbonic Anhydrase 9 (ANT0009R) rabbit antibody



For Research use only, not for diagnostics and clinical use  
Contact Antagene Inc Tel 1-866-964-2589 Email: [info@antageneinc.com](mailto:info@antageneinc.com)