



Mouse Monoclonal Antibody **Carbonic Anhydrase 9** conjugated to Sepharose Beads

CatalogNo: **ANT8132-M**

Size 200ul

Storage Store at 4 °C for frequent use

#### Description

This Antagene antibody is immobilized by the covalent reaction of hydrazinonicotinamide-modified antibody with formylbenzamide-modified beads. It is useful for immunoprecipitation.

**Carbonic Anhydrase 9 (ANT0009R) Rabbit mAb**

Formulation: Each vial contains 1mg/ml Magnetic Bead in PBS, pH 7.2, 0.05mg ANaN3.

#### Host Species

- Rabbit
- Human, Mouse, Rat,

#### Reactivity

- WB, IHC, IF, IP, ELISA

#### Applications

#### MW

- 49kD (Calculated)
- 49kD (Observed)
- IgG, Kappa

#### Isotype

## Recommended Dilution Ratios

### IP

## Basic Information

#### Clonality

Monoclonal

Clone Number      ANT0009R

**Immunogen Information** Specificity

Endogenous

Gene name      CA9  
Protein Name      Carbonic anhydrase 9

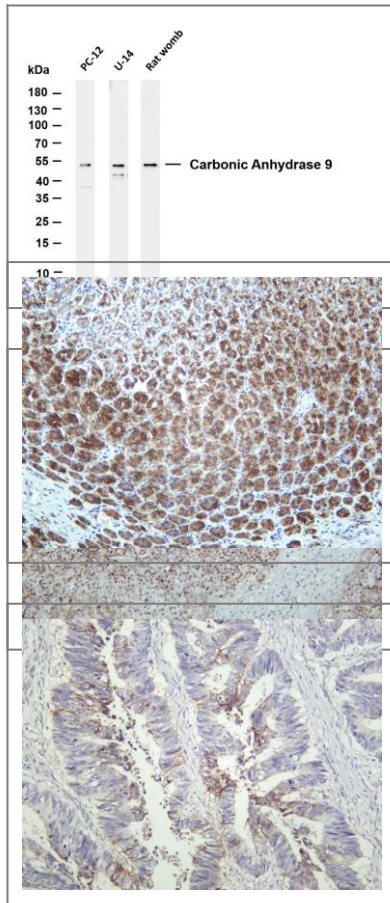
Organism	Gene ID	UniProt ID
Human	<a href="#">768</a> ;	<a href="#">Q16790</a> ;
Mouse	<a href="#">230099</a> ;	<a href="#">Q8VHB5</a> ;

Cellular      Membranous  
Localization

Tissue specificity      Expressed primarily in carcinoma cells lines. Expression is restricted to very few normal tissues and the most abundant expression is found in the epithelial cells of gastric mucosa.

Function      Catalytic activity: $\text{H(2)CO(3)} = \text{CO(2)} + \text{H(2)O}$ .,cofactor:Zinc.,Function:Reversible hydration of carbon dioxide. Participates in pH regulation. May be involved in the control of cell proliferation and transformation. Appears to be a novel specific biomarker for a cervical neoplasia.,induction:By hypoxia.,ANTM:Asn-346 bears high-mannose type glycan structures.,similarity:Belongs to the alpha-carbonic anhydrase family.,subcellular location:Found on the surface microvilli and in the nucleus, particularly in nucleolus.,subunit:Forms oligomers linked by disulfide bonds.,tissue specificity:Expressed primarily in carcinoma cells lines. Expression is restricted to very few normal tissues and the most abundant expression is found in the epithelial cells of gastric mucosa.,

## Validation Data



Various whole cell lysates were separated by 4-20% SDS-PAGE, and the membrane was blotted with anti-Carbonic Anhydrase 9 (ANT0009R) antibody. The HRP-conjugated Goat anti-Rabbit IgG(H + L) antibody was used to detect the antibody. Lane 1: PC-12 Lane 2: U-14 Lane 3: Rat womb Predicted band size: 49kDa Observed band size: 49kDa

Human tonsil was stained with Anti-Carbonic Anhydrase 9 (ANT0009R) rabbit antibody  
Rat stomach was stained with Anti-Carbonic Anhydrase 9 (ANT0009R) rabbit antibody

Human colon carcinoma was stained with Anti-Carbonic Anhydrase 9 (ANT0009R) rabbit antibody

Human stomach was stained with Anti-Carbonic Anhydrase 9 (ANT0009R) rabbit antibody

For Research use only, not for diagnostics and clinical use  
Contact Antagene Inc Tel 1-866-964-2589 Email: [info@antageneinc.com](mailto:info@antageneinc.com)