



Ctip2 (ANT0007R) Rabbit mAb

CatalogNo: ANT8131 **Recombinant** 

Formulation: PBS,50%glycerol,0.05%Proclin 300,0.05%BSA
Quantity : 100 ug/vial

Host Species

- Rabbit
- Human,Mouse,Rat,

Reactivity

- WB,IHC,IF,IP,ELISA

Applications

MW

- 96kD (Calculated)
- 96kD (Observed)

Isotype

- IgG,Kappa

Recommended Dilution Ratios

IHC 1:200-1000

WB 1:1000-5000

IF 1:200-1000

ELISA 1:5000-20000

IP 1:50-200

Storage

Storage* -15°C to -25°C/1 year(Do not lower than -25°C)

Basic Information

Clonality Monoclonal

Clone Number ANT0007R

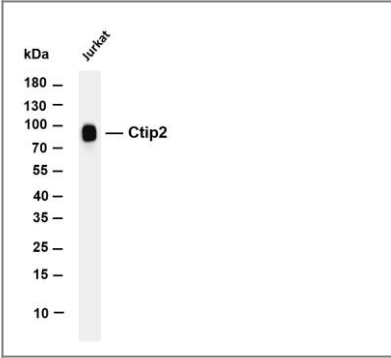
Target Information

Immunogen Information Specificity

Endogenous

Gene name	BCL11B CTIP2 RIT1		
Protein Name	B-cell lymphoma/leukemia 11B (BCL-11B) (B-cell CLL/lymphoma 11B) (COUP-TF-interacting protein 2) (Radiation-induced tumor suppressor gene 1 protein) (hRit1)		
	Organism	Gene ID	UniProt ID
	Human	64919;	Q9C0K0;
	Mouse		Q99PV8;
Cellular Localization	Nucleus		
Tissue specificity	Highly expressed in brain and in malignant T-cell lines derived from patients with adult Tcell leukemia/lymphoma.		
Function	Function:Tumor-suppressor protein involved in T-cell lymphomas. May function on the P53signaling pathway. May be a key regulator of both differentiation and survival during thymocyte development. Repress transcription through direct, TFCOUP2-independent binding to a GC-rich response element.,similarity:Contains 6 C2H2-type zinc fingers.,subunit:Interacts with TFCOUP1, SIRT1, ARP1 and EAR2.,tissue specificity:Highly expressed in brain and in malignant T-cell lines derived from patients with adult T-cell leukemia/lymphoma.,		

Validation Data



Various whole cell lysates were separated by 4-20% SDS-PAGE, and the membrane was blotted with anti-Ctip2 (ANT0007R) antibody. The HRPconjugated Goat anti-Rabbit IgG(H + L) antibody was used to detect the antibody. Lane 1: Jurkat Predicted band size: 96kDa Observed band size: 96kDa

For Research use only, not for diagnostics and clinical use
Contact Antagene Inc Tel 1-866-964-2589 Email: info@antageneinc.com