



## Mouse Monoclonal Antibody **Ctip2** conjugated to Sepharose Beads

CatalogNo: **ANT8131-S**

Size 200ul

Storage Store at 4 °C for frequent use

### Description

This Antagene antibody is immobilized via covalent binding of primary amino groups to N-hydroxysuccinimide (NHS)-activated sepharose beads. It is useful for immunoprecipitation assays.

### **Ctip2 (ANT0007R) Rabbit mAb**

Formulation: 50% slurry in PBS pH 7.2 with 0.01mg NaN3a3 preservative.

#### Host Species

- Rabbit
- Human,Mouse,Rat,

#### Reactivity

- WB,IHC,IF,IP,ELISA

#### Applications

#### MW

- 96kD (Calculated)
- IgG,Kappa
- 96kD (Observed)

#### Isotype

## Recommended Dilution Ratios

### IP

## Basic Information

**Clonality** Monoclonal

**Clone Number** ANT0007R

# Immunogen Information Specificity

Endogenous

**Gene name** BCL11B CTIP2 RIT1  
**Protein Name** B-cell lymphoma/leukemia 11B (BCL-11B) (B-cell CLL/lymphoma 11B) (COUP-TF-interacting protein 2) (Radiation-induced tumor suppressor gene 1 protein) (hRit1)

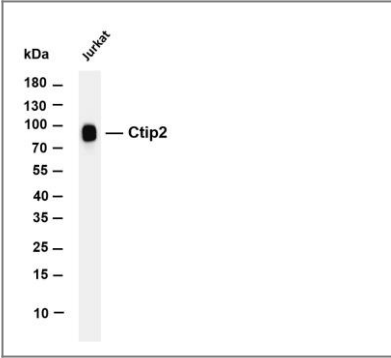
Organism	Gene ID	UniProt ID
Human	<a href="#">64919;</a>	<a href="#">Q9C0K0;</a>
Mouse		<a href="#">Q99PV8;</a>

**Cellular Localization** Nucleus

**Tissue specificity** Highly expressed in brain and in malignant T-cell lines derived from patients with adult Tcell leukemia/lymphoma.

**Function** Function:Tumor-suppressor protein involved in T-cell lymphomas. May function on the P53signaling pathway. May be a key regulator of both differentiation and survival during thymocyte development. Repress transcription through direct, TFCOUP2-independent binding to a GC-rich response element.,similarity:Contains 6 C2H2-type zinc fingers.,subunit:Interacts with TFCOUP1, SIRT1, ARP1 and EAR2.,tissue specificity:Highly expressed in brain and in malignant T-cell lines derived from patients with adult T-cell leukemia/lymphoma.,

## Validation Data



Various whole cell lysates were separated by 4-20% SDS-PAGE, and the membrane was blotted with anti-Ctip2 (ANT0007R) antibody. The HRPconjugated Goat anti-Rabbit IgG(H + L) antibody was used to detect the antibody. Lane 1: Jurkat Predicted band size: 96kDa Observed band size: 96kDa

For Research use only, not for diagnostics and clinical use  
Contact Antagene Inc Tel 1-866-964-2589 Email: [info@antageneinc.com](mailto:info@antageneinc.com)