



TATA Box Binding Protein (ANT0006R) Rabbit mAb

CatalogNo: ANT8130 **Recombinant** 

Formulation: PBS,50%glycerol,0.05%Proclin 300,0.05%BSA
Quantity : 100 ug/vial

Host Species

- Rabbit
- Human,Mouse,Rat,

Reactivity

- WB,IHC,IF,IP,ELISA

Applications

MW

- 38kD (Calculated)
- 38kD (Observed)

Isotype

- IgG,Kappa

Recommended Dilution Ratios

IHC 1:400-1000

WB 1:1000-5000

IF 1:200-1000

ELISA 1:5000-20000

IP 1:50-200

Storage

Storage* -15°C to -25°C/1 year(Do not lower than -25°C)

Basic Information

Clonality Monoclonal

Clone Number ANT0006R

Target Information

Immunogen Information Specificity

Endogenous

Gene name TBP

Protein Name TATA-box-binding protein (TATA sequence-binding protein) (TATA-binding factor) (TATA-box factor) (Transcription initiation factor TFIID TBP subunit)

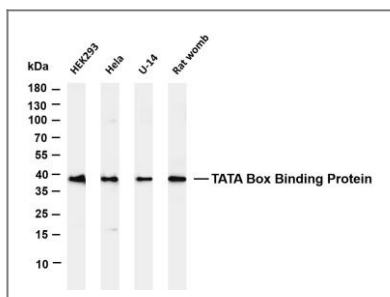
Organism	Gene ID	UniProt ID
Human	6908;	P20226;
Mouse		P29037;

Cellular Localization Nucleus

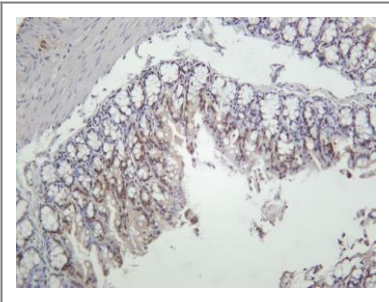
Tissue specificity Widely expressed, with levels highest in the testis and ovary.

Function Disease:Defects in TBP are the cause of spinocerebellar ataxia type 17 (SCA17) [MIM:607136]. Spinocerebellar ataxia is a clinically and genetically heterogeneous group of cerebellar disorders. Patients show progressive incoordination of gait and often poor coordination of hands, speech and eye movements, due to degeneration of the cerebellum with variable involvement of the brainstem and spinal cord. SCA17 is an autosomal dominant cerebellar ataxia (ADCA) characterized by widespread cerebral and cerebellar atrophy, dementia and extrapyramidal signs. The molecular defect in SCA17 is the expansion of a CAG repeat in the coding region of TBP. Longer expansions result in earlier onset and more severe clinical manifestations of the disease.,Function:General transcription factor that functions at the core of the DNA-binding multiprotein factor TFIID. Binding of TFIID to the TATA box is the initial transcriptional step of the pre-initiation complex (PIC), playing a role in the activation of eukaryotic genes transcribed by RNA polymerase II.,polymorphism:The poly-Gln region of TBP is highly polymorphic (25 to 42 repeats) in normal individuals and is expanded to about 47-63 repeats in spinocerebellar ataxia 17 (SCA17) patients.,similarity:Belongs to the TBP family.,subunit:Belongs to the TFIID complex together with the TBP-associated factors (TAFs). Component of the transcription factor SL1/TIF1B complex, composed of TBP and at least TAF1A, TAF1B TAF1C, and TAF3. Binds DNA as monomer. Interacts with TAFs, TFIIB, NCOA6, DRAP1, DR1 and ELF3. Interacts with SPIB, SNAPC1, SNAPC2 and SNAPC4. Interacts with HIV-1 Tat. Interacts with UTF1 which acts as a coactivator of ATF2 transcriptional activity. Interacts with GPBP1 (By similarity). Interacts with BRF2.,tissue specificity:Widely expressed, with levels highest in the testis and ovary.,

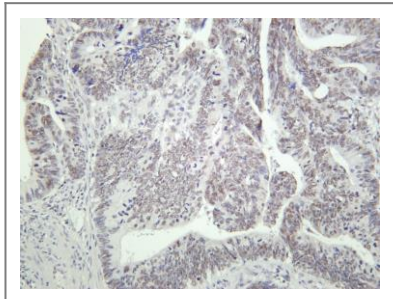
Validation Data



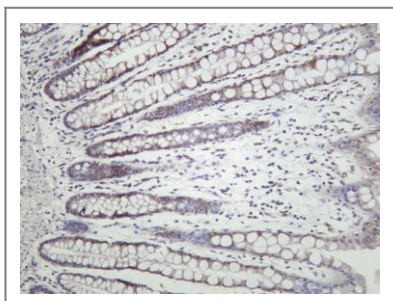
Various whole cell lysates were separated by 4-20% SDS-PAGE, and the membrane was blotted with anti-TATA Box Binding Protein (ANT0006R) antibody. The HRP-conjugated Goat anti-Rabbit IgG(H + L) antibody was used to detect the antibody. Lane 1: HEK293 Lane 2: HeLa Lane 3: U-14 Lane 4: Rat womb Predicted band size: 38kDa Observed band size: 38kDa



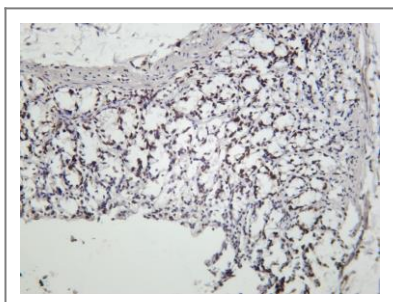
Mouse colon was stained with Anti-TATA Box Binding Protein (ANT0006R) rabbit antibody



Human colon carcinoma was stained with Anti-TATA Box Binding Protein (ANT0006R) rabbit antibody



Human colon was stained with Anti-TATA Box Binding Protein (ANT0006R) rabbit antibody



Rat colon was stained with Anti-TATA Box Binding Protein (ANT0006R) rabbit antibody

For Research use only, not for diagnostics and clinical use
Contact Antagene Inc Tel 1-866-964-2589 Email: info@antageneinc.com