

## Polycomb Protein SUZ12 (ANT0003R) Rabbit mAb

CatalogNo: ANT8128 **Recombinant** 

Formulation: PBS,50%glycerol,0.05%Proclin 300,0.05%BSA  
Quantity : 100 ug/vial

### Host Species

- Rabbit
- Human,Mouse,Rat,

### Reactivity

- WB,IHC,IF,IP,ELISA

### Applications

### MW

- 83kD (Calculated)
- 83kD (Observed)

### Isotype

- IgG,Kappa

## Recommended Dilution Ratios

IHC 1:200-1000

WB 1:1000-5000

IF 1:200-1000

ELISA 1:5000-20000

IP 1:50-200

## Storage

**Storage\*** -15°C to -25°C/1 year(Do not lower than -25°C)

## Basic Information

**Clonality** Monoclonal

**Clone Number** ANT0003R

## Target Information

Endogenous

Gene name SUZ12  
Protein Name Polycomb protein SUZ12

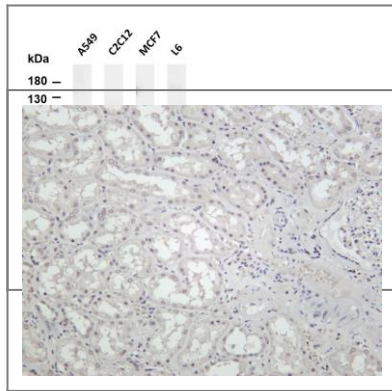
Organism	Gene ID	UniProt ID
Human	<a href="#">23512</a> ;	<a href="#">Q15022</a> ;
Mouse		<a href="#">Q80U70</a> ;

Cellular Localization Nucleus

Tissue specificity Overexpressed in breast and colon cancer.

**Function** Caution:Two variants of the PRC2 complex have been described, termed PRC3 and PRC4. Each of the three complexes may include a different complement of EED isoforms, although the precise sequences of the isoforms in each complex have not been determined. The PRC2 and PRC4 complexes may also methylate 'Lys-26' of histone H1 in addition to 'Lys-27' of histone H3 (PubMed:15099518 and PubMed:15684044), although other studies have demonstrated no methylation of 'Lys-26' of histone H1 by PRC2 (PubMed:16431907).,developmental stage:Expressed at low levels in quiescent cells. Expression rises at the G1/S phase transition.,Disease:A chromosomal aberration involving SUZ12 may be a cause of endometrial stromal tumors. Translocation t(7;17)(p15;q21) with JAZF1. The translocation generates the JAZF1-SUZ12 oncogene consisting of the N-terminus part of JAZF1 and the C-terminus part of SUZ12. It is frequently found in all cases of endometrial stromal tumors, except in endometrial stromal sarcomas, where it is rarer.,Function:Polycomb group (PcG) protein. Component of the PRC2/EED-EZH2 complex, which methylates 'Lys-9' and 'Lys-27' of histone H3, leading to transcriptional repression of the affected target gene. The PRC2/EED-EZH2 complex may also serve as a recruiting platform for DNA methyltransferases, thereby linking two epigenetic repression systems. Genes repressed by the PRC2/EED-EZH2 complex include HOXC8, HOXA9, MYT1 and CDKN2A.,induction:Expression is induced by E2F1, E2F2 and E2F3.,similarity:Belongs to the VEFS (VRN2-EMF2-FIS2-SU(Z)12) family.,similarity:Contains 1 C2H2-type zinc finger.,subunit:Component of the PRC2/EED-EZH2 complex, which includes EED, EZH2, SUZ12, RBBP4 and RBBP7 and possibly AEBP2. The minimum components required for methyltransferase activity of the PRC2/EED-EZH2 complex are EED, EZH2 and SUZ12. Component of the PRC2/EED-EZH1 complex, which includes EED, EZH1, SUZ12, RBBP4 and AEBP2. The PRC2 complex may also interact with DNMT1, DNMT3A, DNMT3B and PHF1 via the EZH2 subunit and with SIRT1 via the SUZ12 subunit. Interacts with WDR77. Interacts with histone H1.,tissue specificity:Overexpressed in breast and colon cancer.,

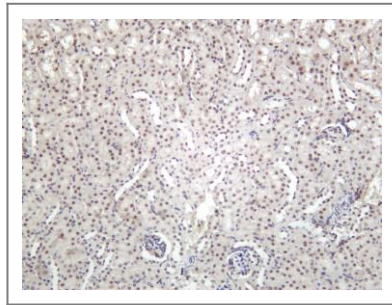
## Validation Data



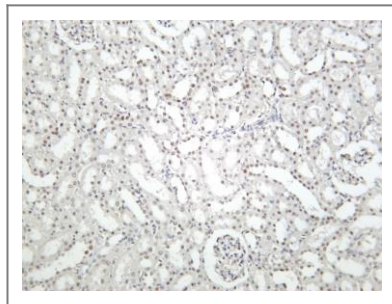
Various whole cell lysates were separated by 4-20% SDS-PAGE, and the membrane was blotted with anti-Polycomb Protein SUZ12 (ANT0003R) antibody. The HRP-conjugated Goat anti-Rabbit IgG(H + L) antibody was used to detect the antibody. Lane 1:A549 Lane 2: C2C12 Lane 3: MCF7 Lane 4: L6

Predicted band size: 83kDa Observed band size: 83kDa

Human kidney was stained with Anti-Polycomb Protein SUZ12 (ANT0003R) rabbit antibody



Mouse kidney was stained with Anti-Polycomb Protein SUZ12 (ANT0003R) rabbit antibody



Rat kidney was stained with Anti-Polycomb Protein SUZ12 (ANT0003R) rabbit antibody

For Research use only, not for diagnostics and clinical use  
Contact Antagene Inc Tel 1-866-964-2589 Email: [info@antageneinc.com](mailto:info@antageneinc.com)