



TUBA1B (ANT0000R) Rabbit mAb

CatalogNo: ANT8126 **Recombinant** 

Formulation: PBS,50%glycerol,0.05%Proclin 300,0.05%BSA
Quantity : 100 ug/vial

Host Species

- Rabbit
- Human,Mouse,Rat,

Reactivity

- WB,IHC,IF,IP,ELISA

Applications

MW

- 50kD (Calculated)
- 50kD (Observed)
- IgG,Kappa

Isotype

Recommended Dilution Ratios

IHC 1:200-1:1000

WB 1:1000-1:5000

IF 1:200-1:1000

ELISA 1:5000-1:20000

IP 1:50-1:200,

Storage

Storage* -15°C to -25°C/1 year(Do not lower than -25°C)

Basic Information

Clonality Monoclonal

Clone Number ANT0000R

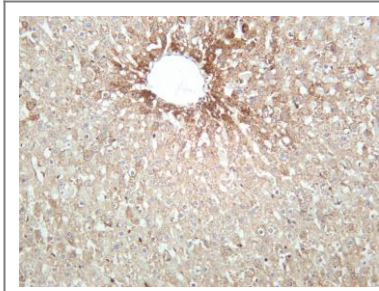
Target Information

Endogenous

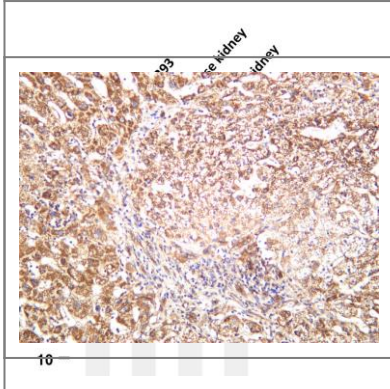
Gene name	TUBA1B		
Protein Name	Tubulin alpha-1B chain (Alpha-tubulin ubiquitous) (Tubulin K-alpha-1) (Tubulin alphaubiquitous chain)		
	Organism	Gene ID	UniProt ID
	Human	7277 ;	P68363 ;
	Mouse		P05213 ;
	Rat		Q6P9V9 ;
Cellular Localization	Cytoplasm		
Tissue specificity	Brain,Cajal-Retzius cell,Colon,Embryonic kidney,Eye,Fetal brain cortex,Keratinocyte		
Function	Function:Tubulin is the major constituent of microtubules. It binds two moles of GTP, one at an exchangeable site on the beta chain and one at a non-exchangeable site on the alphachain.,ANTM:Undergoes a tyrosination/detyrosination cycle, the cyclic removal and readdition of a C-terminal tyrosine residue by the enzymes tubulin tyrosine carboxypeptidase (TTCP) and tubulin tyrosine ligase (TTL), respectively.,similarity:Belongs to the tubulin family.,subunit:Dimer of alpha and beta chains.,		

Validation Data

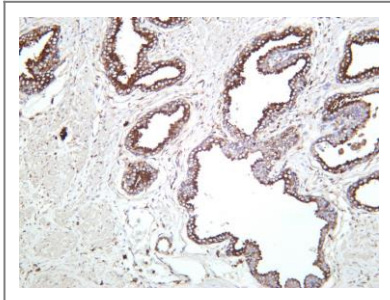
Rat liver was stained with anti-TUBA1B (ANT0000R) rabbit antibody



Various whole cell lysates were separated by 4-20% SDS-PAGE, and the membrane was blotted with anti-TUBA1B (ANT0000R) antibody. The HRPconjugated Goat anti-Rabbit IgG(H + L) antibody was used to detect the antibody. Lane 1: Hela Lane 2: HEK293 Lane 3: Mouse kidney Lane 4: Rat kidney Predicted band size: 50kDa Observed band size: 50kDa



Human liver was stained with anti-TUBA1B (ANT0000R) rabbit antibody



Human prostate was stained with anti-TUBA1B (ANT0000R) rabbit antibody

For Research use only, not for diagnostics and clinical use
Contact Antagene Inc Tel 1-866-964-2589 Email: info@antageneinc.com