



## Mouse Monoclonal Antibody **TUBA1B** conjugated to Sepharose Beads

CatalogNo: **ANT8126-S**

Size 200ul

Storage Store at 4 °C for frequent use

### Description

This Antagene antibody is immobilized via covalent binding of primary amino groups to N-hydroxysuccinimide (NHS)-activated sepharose beads. It is useful for immunoprecipitation assays.

### **TUBA1B (ANT0000R) Rabbit mAb**

Formulation: 50% slurry in PBS pH 7.2 with 0.01mg NaN<sub>3</sub> preservative.

#### Host Species

- Rabbit
- Human, Mouse, Rat,

#### Reactivity

- WB, IHC, IF, IP, ELISA

#### Applications

#### MW

- 50kD (Calculated)
  - IgG, Kappa
- 50kD (Observed)

#### Isotype

## **Recommended Dilution Ratios**

### **IP**

## **Basic Information**

#### Clonality

Monoclonal

Clone Number      ANT0000R

**Immunogen Information** Specificity

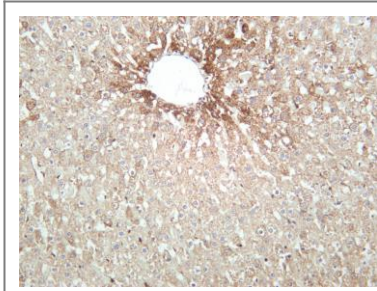
Endogenous

Gene name	TUBA1B		
Protein Name	Tubulin alpha-1B chain (Alpha-tubulin ubiquitous) (Tubulin K-alpha-1) (Tubulin alphaubiquitous chain)		
	Organism	Gene ID	UniProt ID
	Human	<a href="#">7277</a> ;	<a href="#">P68363</a> ;
	Mouse		<a href="#">P05213</a> ;
	Rat		<a href="#">Q6P9V9</a> ;
Cellular Localization	Cytoplasm		
Tissue specificity	Brain,Cajal-Retzius cell,Colon,Embryonic kidney,Eye,Fetal brain cortex,Keratinocyte		
Function	Function:Tubulin is the major constituent of microtubules. It binds two moles of GTP, one at an exchangeable site on the beta chain and one at a non-exchangeable site on the alphachain.,ANTM:Undergoes a tyrosination/detyrosination cycle, the cyclic removal and readdition of a C-terminal tyrosine residue by the enzymes tubulin tyrosine carboxypeptidase (TTCP) and tubulin tyrosine ligase (TTL), respectively.,similarity:Belongs to the tubulin family.,subunit:Dimer of alpha and beta chains.,		

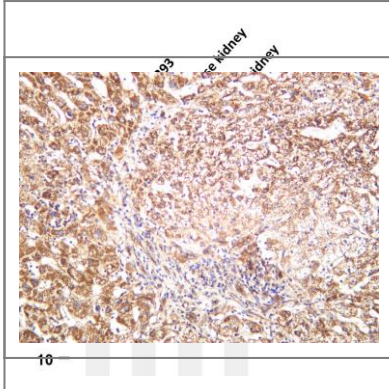
---

## Validation Data

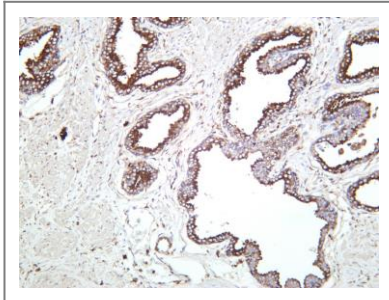
Rat liver was stained with anti-TUBA1B (ANT0000R) rabbit antibody



Various whole cell lysates were separated by 4-20% SDS-PAGE, and the membrane was blotted with anti-TUBA1B (ANT0000R) antibody. The HRPconjugated Goat anti-Rabbit IgG(H + L) antibody was used to detect the antibody. Lane 1: Hela Lane 2: HEK293 Lane 3: Mouse kidney Lane 4: Rat kidney Predicted band size: 50kDa Observed band size: 50kDa



Human liver was stained with anti-TUBA1B (ANT0000R) rabbit antibody



Human prostate was stained with anti-TUBA1B (ANT0000R) rabbit antibody

For Research use only, not for diagnostics and clinical use  
Contact Antagene Inc Tel 1-866-964-2589 Email: [info@antageneinc.com](mailto:info@antageneinc.com)