



Mouse Monoclonal Antibody **TUBA1B** conjugated to Sepharose Beads

CatalogNo: **ANT8126-M**

Size 200ul

Storage Store at 4 °C for frequent use

Description

This Antagene antibody is immobilized by the covalent reaction of hydrazinonicotinamide-modified antibody with formylbenzamide-modified beads. It is useful for immunoprecipitation.

TUBA1B (ANT0000R) Rabbit mAb

Formulation: Each vial contains 1mg/ml Magnetic Bead in PBS, pH 7.2, 0.05mg ANaN3.

Host Species

- Rabbit
- Human, Mouse, Rat,

Reactivity

- WB, IHC, IF, IP, ELISA

Applications

MW

- 50kD (Calculated)
 - IgG, Kappa
- 50kD (Observed)

Isotype

Recommended Dilution Ratios

IP

Basic Information

Clonality

Monoclonal

Clone Number ANT0000R

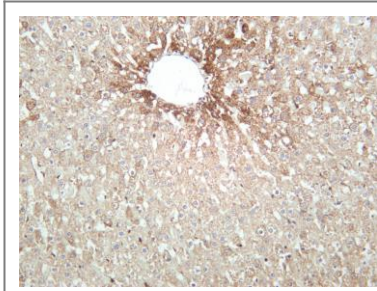
Immunogen Information Specificity

Endogenous

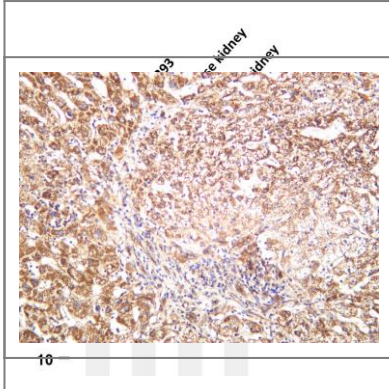
Gene name	TUBA1B		
Protein Name	Tubulin alpha-1B chain (Alpha-tubulin ubiquitous) (Tubulin K-alpha-1) (Tubulin alphaubiquitous chain)		
	Organism	Gene ID	UniProt ID
	Human	7277 ;	P68363 ;
	Mouse		P05213 ;
	Rat		Q6P9V9 ;
Cellular Localization	Cytoplasm		
Tissue specificity	Brain,Cajal-Retzius cell,Colon,Embryonic kidney,Eye,Fetal brain cortex,Keratinocyte		
Function	Function:Tubulin is the major constituent of microtubules. It binds two moles of GTP, one at an exchangeable site on the beta chain and one at a non-exchangeable site on the alphachain.,ANTM:Undergoes a tyrosination/detyrosination cycle, the cyclic removal and readdition of a C-terminal tyrosine residue by the enzymes tubulin tyrosine carboxypeptidase (TTCP) and tubulin tyrosine ligase (TTL), respectively.,similarity:Belongs to the tubulin family.,subunit:Dimer of alpha and beta chains.,		

Validation Data

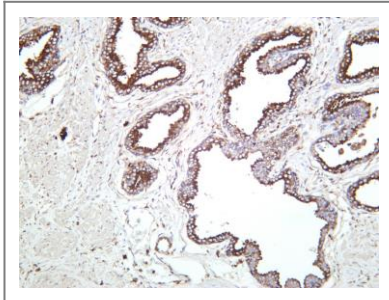
Rat liver was stained with anti-TUBA1B (ANT0000R) rabbit antibody



Various whole cell lysates were separated by 4-20% SDS-PAGE, and the membrane was blotted with anti-TUBA1B (ANT0000R) antibody. The HRPconjugated Goat anti-Rabbit IgG(H + L) antibody was used to detect the antibody. Lane 1: Hela Lane 2: HEK293 Lane 3: Mouse kidney Lane 4: Rat kidney Predicted band size: 50kDa Observed band size: 50kDa



Human liver was stained with anti-TUBA1B (ANT0000R) rabbit antibody



Human prostate was stained with anti-TUBA1B (ANT0000R) rabbit antibody

For Research use only, not for diagnostics and clinical use
Contact Antagene Inc Tel 1-866-964-2589 Email: info@antageneinc.com