



## Mouse Monoclonal Antibody **Optineurin** conjugated to Sepharose Beads

CatalogNo: **ANT8124-S**

Size 200ul

Storage Store at 4 °C for frequent use

### Description

This Antagene antibody is immobilized via covalent binding of primary amino groups to N-hydroxysuccinimide (NHS)-activated sepharose beads. It is useful for immunoprecipitation assays.

### **Optineurin (ANT0097R) Rabbit mAb**

Formulation: 50% slurry in PBS pH 7.2 with 0.01mg NaN<sub>3</sub> preservative.

#### Host Species

- Rabbit
- Human, Mouse, Rat,

#### Reactivity

- WB, IHC, IF, IP, ELISA

#### Applications

#### MW

- 63kD (Calculated)
- IgG, Kappa
- 74kD (Observed)

#### Isotype

## **Recommended Dilution Ratios**

### **IP**

### **Basic Information**

<b>Clonality</b>	Monoclonal
<b>Clone Number</b>	ANT0097R

Endogenous

Gene name OPTN FIP2 GLC1E HIP7 HYPL NRP

Protein Name OPTN

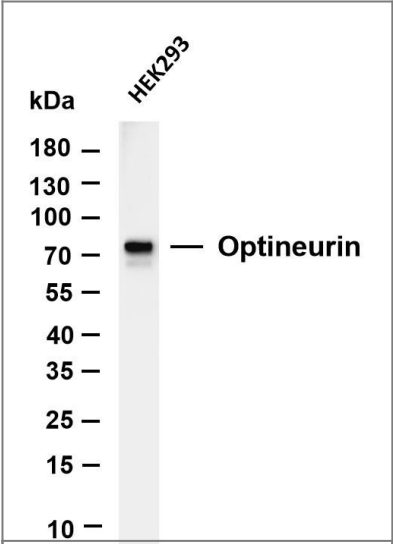
Organism	Gene ID	UniProt ID
Human	<a href="#">10133;</a>	<a href="#">Q96CV9;</a>
Mouse	<a href="#">71648;</a>	<a href="#">Q8K3K8;</a>
Rat	<a href="#">246294;</a>	<a href="#">Q8R5M4;</a>

Cellular Localization Cytoplasm

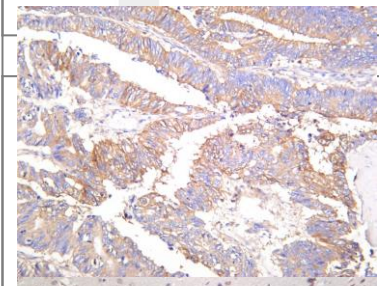
Tissue specificity Present in aqueous humor of the eye (at protein level). Highly expressed in trabecular meshwork. Expressed nonpigmented ciliary epithelium, retina, brain, adrenal cortex, fetus, lymphocyte, fibroblast, skeletal muscle, heart, liver, brain and placenta.

---

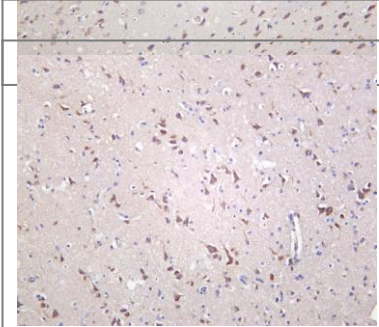
# Validation Data



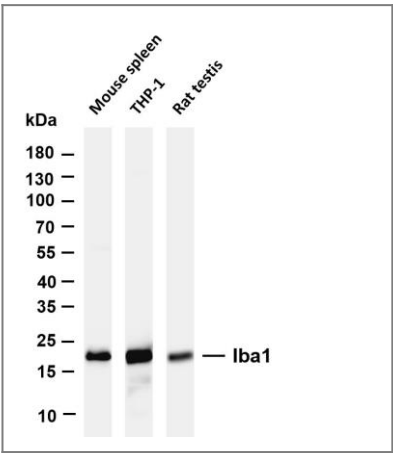
Various whole cell lysates were separated by 4-20% SDS-PAGE, and the membrane was blotted with anti-Optineurin (ANT0097R) antibody. The HRPconjugated Goat anti-Rabbit IgG(H + L) antibody was used to detect the antibody. Lane 1: HEK293 Predicted band size: 63kDa Observed band size: 74kDa



Mouse brain was stained with Anti-Optineurin (ANT0097R) rabbit antibody  
Human colon carcinoma was stained with Anti-Optineurin (ANT0097R) rabbit antibody



Human brain was stained with Anti-Optineurin (ANT0097R) rabbit antibody



Various whole cell lysates were separated by 4-20% SDS-PAGE, and the membrane was blotted with anti-Optineurin (ANT0097R) antibody. The HRPconjugated Goat anti-Rabbit IgG(H + L) antibody was used to detect the antibody. Lane 1: HEK293 Lane 2: HepG2 Lane 3: Mouse liver Lane 4: Rat liver Predicted band size: 63kDa Observed band size: 70kD

For Research use only, not for diagnostics and clinical use Contact Antagene Inc Tel 1-866-964-2589 Email:  
info@antageneinc.com