



## Mouse Monoclonal Antibody **EAAT1** conjugated to Sepharose Beads

CatalogNo: **ANT8123-S**

Size 200ul

Storage Store at 4 °C for frequent use

### Description

This Antagene antibody is immobilized via covalent binding of primary amino groups to N-hydroxysuccinimide (NHS)-activated sepharose beads. It is useful for immunoprecipitation assays.

### **EAAT1 (ANT0096R) Rabbit mAb**

Formulation: 50% slurry in PBS pH 7.2 with 0.01mg NaN<sub>3</sub> preservative.

#### Host Species

- Rabbit
- Human, Mouse, Rat,

#### Reactivity

- WB, IHC, IF, IP, ELISA

#### Applications

#### MW

- 60kD (Calculated)
- 59kD (Observed)
- IgG, Kappa

#### Isotype

## Recommended Dilution Ratios

### IP

### Basic Information

**Clonality** Monoclonal

**Clone Number** ANT0096R

# Immunogen Information Specificity

Endogenous

Gene name SLC1A3  
Protein Name Excitatory amino acid transporter 1

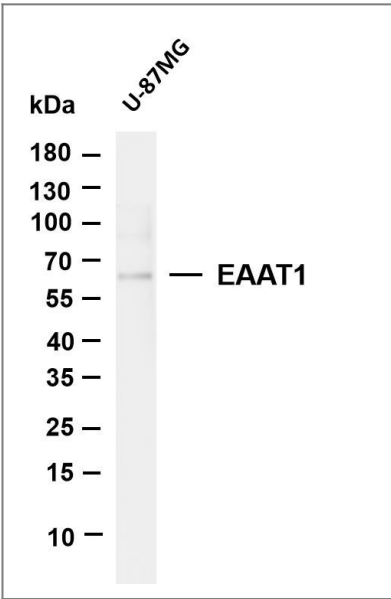
Organism	Gene ID	UniProt ID
Human	<a href="#">6507</a> ;	<a href="#">P43003</a> ;
Mouse		<a href="#">P56564</a> ;

Cellular Localization Cell membrane

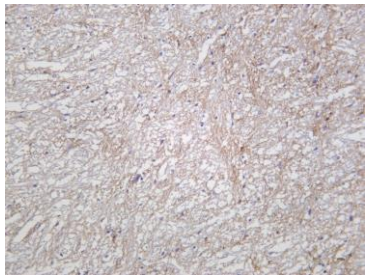
Tissue specificity Detected in brain (PubMed:8218410, PubMed:7521911, PubMed:8123008). Detected at very much lower levels in heart, lung, placenta and skeletal muscle (PubMed:7521911, PubMed:8123008). Highly expressed in cerebellum, but also found in frontal cortex, hippocampus and basal ganglia (PubMed:7521911).

Function Disease:Defects in SLC1A3 are the cause of episodic ataxia type 6 (EA6) [MIM:612656]. EA6 is characterized by episodic ataxia, seizures, migraine and alternating hemiplegia.,Function:Transports L- glutamate and also L- and D-aspartate. Essential for terminating the postsynaptic action of glutamate by rapidly removing released glutamate from the synaptic cleft. Acts as a symport by cotransporting sodium.,ANTM:Glycosylated.,similarity:Belongs to the sodium:dicarboxylate (SDF) symporter (TC 2.A.23) family.,tissue specificity:Highly expressed in cerebellum, but also found in frontal cortex, hippocampus and basal ganglia.,

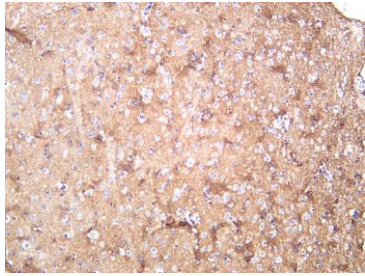
## Validation Data



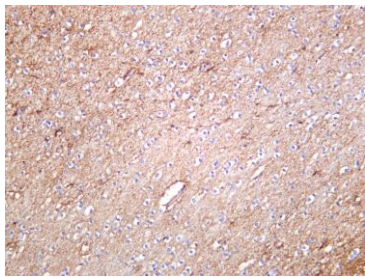
Various whole cell lysates were separated by 4-20% SDS-PAGE, and the membrane was blotted with anti-EAAT1 (ANT0096R) antibody. The HRPconjugated Goat anti-Rabbit IgG(H + L) antibody was used to detect the antibody. Lane 1: U-87MG Predicted band size: 60kDa Observed band size: 59kDa



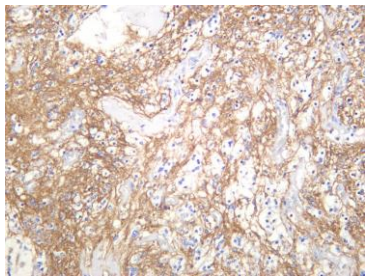
Rat brain was stained with Anti-EAAT1 (ANT0096R) rabbit antibody



Mouse brain was stained with Anti-EAAT1 (ANT0096R) rabbit antibody



Human brain was stained with Anti-EAAT1 (ANT0096R) rabbit antibody



Human glioma was stained with anti-EAAT1 (ANT0096R) rabbit antibody

For Research use only, not for diagnostics and clinical use  
Contact Antagene Inc Tel 1-866-964-2589 Email: [info@antageneinc.com](mailto:info@antageneinc.com)