



Mouse Monoclonal Antibody **Fibrillar** conjugated to Sepharose Beads

CatalogNo: **ANT8122-S**

Size 200ul

Storage Store at 4 °C for frequent use

Description

This Antagene antibody is immobilized via covalent binding of primary amino groups to N-hydroxysuccinimide (NHS)-activated sepharose beads. It is useful for immunoprecipitation assays.

Fibrillar (ANT0095R) Rabbit mAb

Formulation: 50% slurry in PBS pH 7.2 with 0.01mg NaN₃ preservative.

Host Species

- Rabbit
- Human, Mouse, Rat,

Reactivity

- WB, IHC, IF, IP, ELISA

Applications

MW

- 34kD (Calculated)
 - IgG, Kappa
- 34kD (Observed)

Isotype

Recommended Dilution Ratios

IP

Basic Information

Clonality	Monoclonal
-----------	------------

Clone Number	ANT0095R
--------------	----------

Immunogen Information Specificity

Endogenous

Gene name FBL FIB1 FLRN

Protein Name rRNA 2'-O-methyltransferase fibrillarin (34 kDa nucleolar scleroderma antigen)

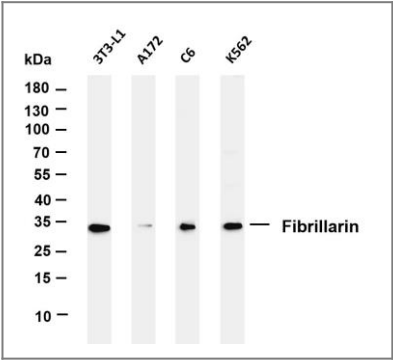
Organism	Gene ID	UniProt ID
Human	2091 ;	P22087 ;
Mouse	100044829 ;	P35550 ;
Rat	292747 ;	P22509 ;

Cellular Localization Nucleus

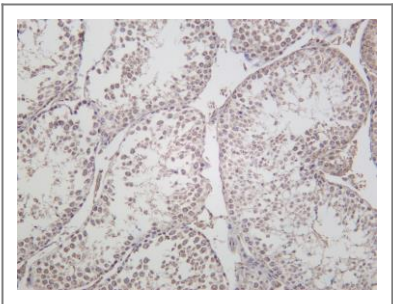
Localization

Function S-adenosyl-L-methionine-dependent methyltransferase that has the ability to methylate both RNAs and proteins . Involved in pre-rRNA processing by catalyzing the site-specific 2'hydroxyl methylation of ribose moieties in pre-ribosomal RNA . Site specificity is provided by a guide RNA that base pairs with the substrate (By similarity). Methylation occurs at a characteristic distance from the sequence involved in base pairing with the guide RNA (By similarity). Probably catalyzes 2'-O-methylation of U6 snRNAs in box C/D RNP complexes . U6 snRNA 2'-O-methylation is required for mRNA splicing fidelity . Also acts as a protein methyltransferase by mediating methylation of 'Gln-105' of histone H2A (H2AQ104me), a modification that impairs binding of the FACT complex and is specifically present at 35S ribosomal DNA locus .

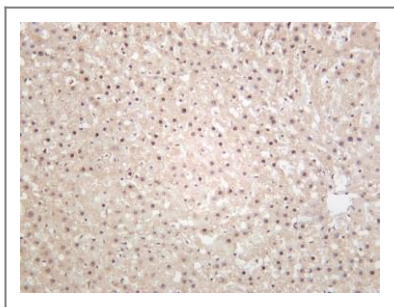
Validation Data



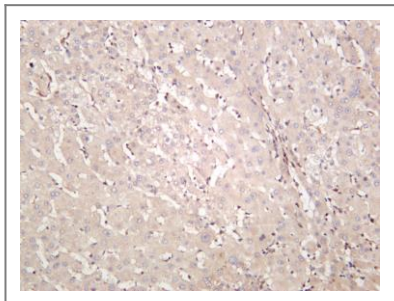
Various whole cell lysates were separated by 4-20% SDS-PAGE, and the membrane was blotted with anti-Fibrillarin (ANT0095R) antibody. The HRPconjugated Goat anti-Rabbit IgG(H + L) antibody was used to detect the antibody. Lane 1: 3T3-L1 Lane 2: A172 Lane 3: C6 Lane 4: K562 Predicted band size: 34kDa Observed band size: 34kDa



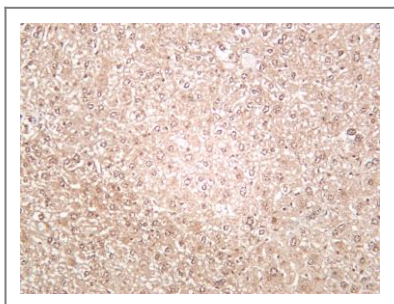
Mouse testis was stained with Anti-Fibrillarin (ANT0095R) rabbit antibody



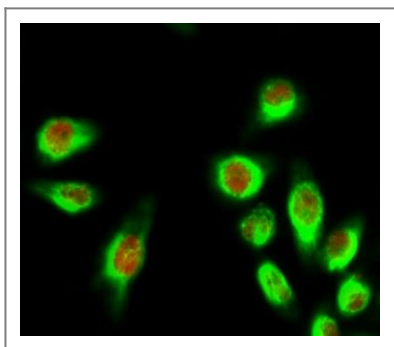
Rat liver was stained with anti-Fibrillarin (ANT0095R) rabbit antibody



Human liver was stained with anti-Fibrillarin (ANT0095R) rabbit antibody



Mouse liver was stained with anti-Fibrillarin (ANT0095R) rabbit antibody



Immunofluorescence analysis of HeLa cell. 1, E2F-1 Antibody (red) was diluted at 1:200 (4° overnight). HER2 Monoclonal Antibody (11H9) (green) was diluted at 1:200 (4° overnight). 2, Goat Anti Rabbit Alexa Fluor 594 Catalog: RS3611 was diluted at 1:1000 (room temperature, 50min). Goat Anti Mouse Alexa Fluor 488 Catalog: RS3208 was diluted at 1:1000 (room temperature, 50min).

For Research use only, not for diagnostics and clinical use
Contact Antagene Inc Tel 1-866-964-2589 Email: info@antageneinc.com