

CTGF (ANT0091R) Rabbit mAb

CatalogNo: ANT8119 **Recombinant** 

Formulation: PBS,50%glycerol,0.05%Proclin 300,0.05%BSA
Quantity : 100 ug/vial

Host Species

- Rabbit
- Human,Mouse,Rat,

Reactivity

- WB,IP,ELISA

Applications

MW

- 38kD (Calculated)
 - IgG,Kappa
- 38kD (Observed)

Isotype

Recommended Dilution Ratios

WB 1:500-2000

ELISA 1:5000-20000

IP 1:50-200

Storage

Storage* -15°C to -25°C/1 year(Do not lower than -25°C)

Basic Information

Clonality Monoclonal

Clone Number ANT0091R

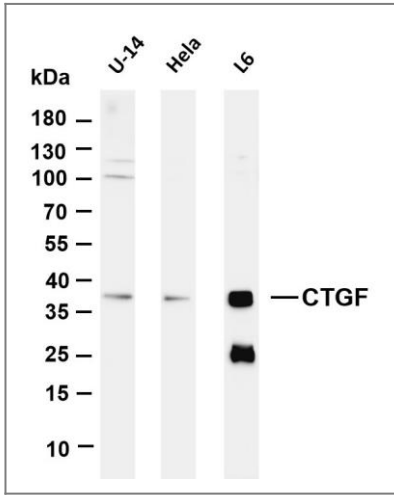
Immunogen Information

Specificity Endogenous

Target Information

Gene name	CTGF CCN2 HCS24 IGFBP8		
Protein Name	Connective tissue growth factor (CCN family member 2) (Hypertrophic chondrocyte-specific protein 24) (Insulin-like growth factor-binding protein 8) (IBP-8) (IGF-binding protein 8) (IGFBP-8)		
	Organism	Gene ID	UniProt ID
	Human	1490;	P29279;
	Mouse	14219;	P29268;
	Rat		Q9R1E9;
Cellular Localization	Secreted		
Tissue specificity	Expressed in bone marrow and thymic cells. Also expressed one of two Wilms tumors tested.		
Function	Function:Major connective tissue mitottractant secreted by vascular endothelial cells. Promotes proliferation and differentiation of chondrocytes. Mediates heparin- and divalent cation-dependent cell adhesion in many cell types including fibroblasts, myofibroblasts, endothelial and epithelial cells. Enhances fibroblast growth factor-induced DNA synthesis.,similarity:Belongs to the CCN family.,similarity:Contains 1 CTCK (C-terminal cystine knot-like) domain.,similarity:Contains 1 IGFBP N-terminal domain.,similarity:Contains 1 TSP type-1 domain.,similarity:Contains 1 VWFC domain.,subunit:Monomer.,		

Validation Data



Various whole cell lysates were separated by 4-20% SDS-PAGE, and the membrane was blotted with anti-CTGF (ANT0091R) antibody. The HRPconjugated Goat anti-Rabbit IgG(H + L) antibody was used to detect the antibody. Lane 1: U-14 Lane 2: HeLa Lane 3: L6
Predicted band size: 38kDa Observed band size: 38kDa