



Mouse Monoclonal Antibody CTGF conjugated to Sepharose Beads

CatalogNo: **ANT8119-M**

Size 200ul

Storage Store at 4 °C for frequent use

Description

This Antagene antibody is immobilized by the covalent reaction of hydrazinonicotinamide-modified antibody with formylbenzamide-modified beads. It is useful for immunoprecipitation.

CTGF (ANT0091R) Rabbit mAb

Formulation: Each vial contains 1mg/ml Magnetic Bead in PBS, pH 7.2, 0.05mg ANaN3.

Host Species

- Rabbit
- Human, Mouse, Rat,

Reactivity

- WB, IP, ELISA

Applications

MW

- 38kD (Calculated)
- 38kD (Observed)
- IgG, Kappa

Isotype

Recommended Dilution Ratios

IP

Basic Information

Clonality	Monoclonal
-----------	------------

Clone Number	ANT0091R
--------------	----------

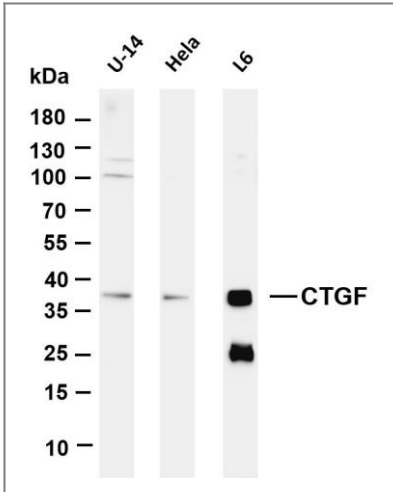
Immunogen Information

Specificity	Endogenous
-------------	------------

Target Information

Gene name	CTGF CCN2 HCS24 IGFBP8		
Protein Name	Connective tissue growth factor (CCN family member 2) (Hypertrophic chondrocyte-specific protein 24) (Insulin-like growth factor-binding protein 8) (IBP-8) (IGF-binding protein 8) (IGFBP-8)		
	Organism	Gene ID	UniProt ID
	Human	1490 ;	P29279 ;
	Mouse	14219 ;	P29268 ;
	Rat		Q9R1E9 ;
Cellular Localization	Secreted		
Tissue specificity	Expressed in bone marrow and thymic cells. Also expressed one of two Wilms tumors tested.		
Function	Function:Major connective tissue mitoattractant secreted by vascular endothelial cells. Promotes proliferation and differentiation of chondrocytes. Mediates heparin- and divalent cation-dependent cell adhesion in many cell types including fibroblasts, myofibroblasts, endothelial and epithelial cells. Enhances fibroblast growth factor-induced DNA synthesis.,similarity:Belongs to the CCN family.,similarity:Contains 1 CTCK (C-terminal cystine knot-like) domain.,similarity:Contains 1 IGFBP N-terminal domain.,similarity:Contains 1 TSP type-1 domain.,similarity:Contains 1 VWFC domain.,subunit:Monomer,		

Validation Data



Various whole cell lysates were separated by 4-20% SDS-PAGE, and the membrane was blotted with anti-CTGF (ANT0091R) antibody. The HRPconjugated Goat anti-Rabbit IgG(H + L) antibody was used to detect the antibody. Lane 1: U-14 Lane 2: HeLa Lane 3: L6
Predicted band size: 38kDa Observed band size: 38kDa