



Mouse Monoclonal Antibody **Hexokinase II** conjugated to Sepharose Beads

CatalogNo: **ANT8118-S**

Size 200ul

Storage Store at 4 °C for frequent use

### Description

This Antagene antibody is immobilized via covalent binding of primary amino groups to N-hydroxysuccinimide (NHS)-activated sepharose beads. It is useful for immunoprecipitation assays.

### Hexokinase II (ANT0089R) Rabbit mAb

Formulation: 50% slurry in PBS pH 7.2 with 0.01mg NaN<sub>3</sub> preservative.

#### Host Species

- Rabbit
- Human, Mouse, Rat,

#### Reactivity

- WB, IHC, IF, IP, ELISA

#### Applications

#### MW

- 87kD (Calculated)
- 100kD (Observed)

#### Isotype

- IgG, Kappa

## Recommended Dilution Ratios

### IP

## Basic Information

#### Clonality

Monoclonal

Immunogen Information Specificity

Endogenous

Gene name HK2  
Protein Name Hexokinase-2

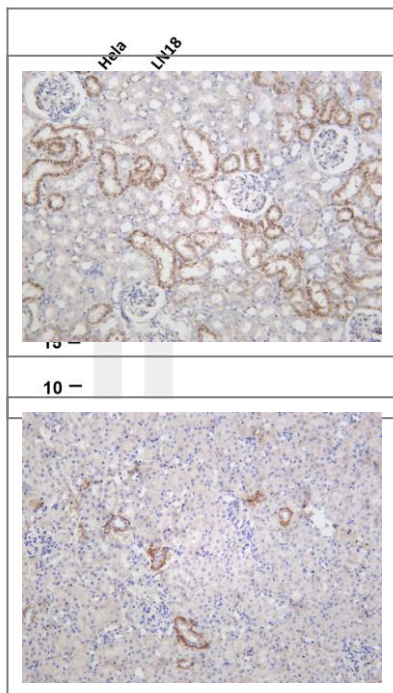
Organism	Gene ID	UniProt ID
Human	<a href="#">3099</a> ;	<a href="#">P52789</a> ;
Mouse	<a href="#">15277</a> ;	<a href="#">O08528</a> ;
Rat	<a href="#">25059</a> ;	<a href="#">P27881</a> ;

Cellular Localization Cytoplasm

Tissue specificity Predominant hexokinase isozyme expressed in insulin-responsive tissues such as skeletal muscle.

Function Catalytic activity:ATP + D-hexose = ADP + D-hexose 6-phosphate.,Domain:The N- and Cterminal halves of this hexokinase show extensive sequence similarity to each other. The catalytic activity is associated with the C-terminus while regulatory function is associated with the N-terminus.,enzyme regulation:Hexokinase is an allosteric enzyme inhibited by its product Glc-6-P.,miscellaneous:In vertebrates there are four major glucose-phosphorylating isoenzymes, designated hexokinase I, II, III and IV (glucokinase).,online information:Hexokinase entry,pathway:Carbohydrate metabolism; hexose metabolism.,polymorphism:Although found in NIDDM patients, genetic variations of HK2 do not contribute to the disease.,similarity:Belongs to the hexokinase family.,subcellular location:Its hydrophobic N-terminal sequence may be involved in membrane binding.,subunit:Monomer.,tissue specificity:Predominant hexokinase isozyme expressed in insulin-responsive tissues such as skeletal muscle.,

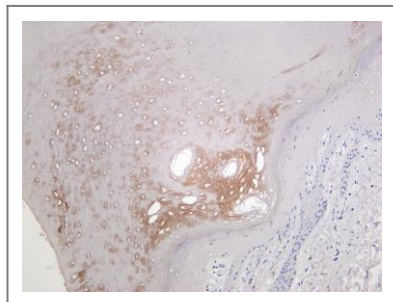
## Validation Data



Various whole cell lysates were separated by 4-20% SDS-PAGE, and the membrane was blotted with anti-Hexokinase II (ANT0089R) antibody. The HRPconjugated Goat anti-Rabbit IgG(H + L) antibody was used to detect the antibody. Lane 1: Hela Lane 2: LN18  
Predicted band size: 87kDa Observed band size: 100kDa

Rat kidney was stained with Anti-Hexokinase II (ANT0089R) rabbit antibody

Mouse kidney was stained with Anti-Hexokinase II (ANT0089R) rabbit antibody



Human skin was stained with Anti-Hexokinase II (ANT0089R) rabbit antibody

For Research use only, not for diagnostics and clinical use  
Contact Antagene Inc Tel 1-866-964-2589 Email: [info@antageneinc.com](mailto:info@antageneinc.com)