



EEA1 (ANT0088R) Rabbit mAb

CatalogNo: ANT8117 **Recombinant** 

Formulation: PBS,50%glycerol,0.05%Proclin 300,0.05%BSA
Quantity : 100 ug/vial

Host Species

- Rabbit

MW

- 162kD (Calculated)
- 162kD (Observed)

Reactivity

- Human,Mouse,Rat,

Isotype

- IgG,Kappa

Applications

- WB,IHC,IF,IP,ELISA

Recommended Dilution Ratios

IHC 1:100-200

WB 1:1000-5000

IF 1:200-1000

ELISA 1:5000-20000

IP 1:50-200

Storage

Storage* -15°C to -25°C/1 year(Do not lower than -25°C)

Basic Information

Clonality Monoclonal

Clone Number ANT0088R

Target Information

Immunogen Information Specificity

Endogenous

Gene name EEA1
Protein Name Early endosome antigen 1

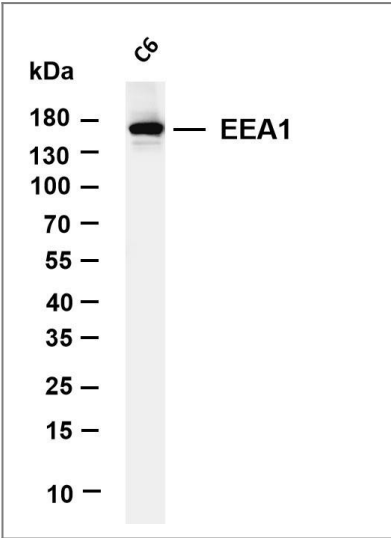
Organism	Gene ID	UniProt ID
Human	8411 ;	Q15075 ;
Mouse	216238 ;	Q8BL66 ;

Cellular Localization Cytoplasm

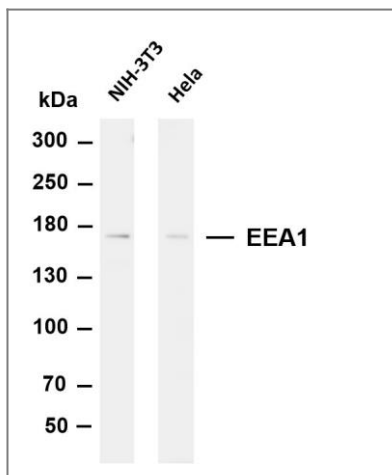
Tissue specificity Aorta,Cervix carcinoma,Fetal brain cortex,Skeletal muscle,

Function Disease:Antibodies against EEA1 are found in sera from patients with subacute cutaneous lupus erythematosus and other autoimmune diseases.,Domain:The FYVE-type zinc finger domain mediates interactions with phosphatidylinositol 3-phosphate.,Function:Binds phospholipid vesicles containing phosphatidylinositol 3-phosphate and participates in endosomal trafficking.,similarity:Contains 1 C2H2-type zinc finger.,similarity:Contains 1 FYVE-type zinc finger.,subunit:Homodimer. Binds STX6. Binds RAB5A, RAB5B, RAB5C and RAB22A that have been activated by GTP-binding.,

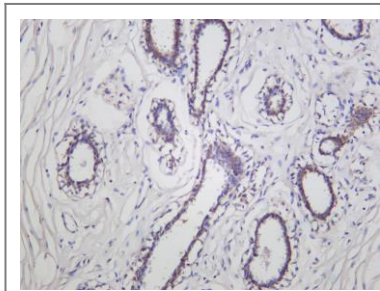
Validation Data



Various whole cell lysates were separated by 4-20% SDS-PAGE, and the membrane was blotted with anti-EEA1 (ANT0088R) antibody. The HRPconjugated Goat anti-Rabbit IgG(H + L) antibody was used to detect the antibody. Lane 1: C6 Predicted band size: 162kDa
Observed band size:
162kDa



Various whole cell lysates were separated by 4-8% SDS-PAGE, and the membrane was blotted with anti-EEA1 (ANT0088R) antibody. The HRPconjugated Goat anti-Rabbit IgG(H + L) antibody was used to detect the antibody. Lane 1: NIH-3T3 Lane 2: HeLa Predicted band size: 162kDa
Observed band size: 162kDa



Human ductal breast carcinoma was stained with Anti-EEA1 (ANT0088R) rabbit antibody

For Research use only, not for diagnostics and clinical use
Contact Antagene Inc Tel 1-866-964-2589 Email: info@antageneinc.com