



## Mouse Monoclonal Antibody **EEA1** conjugated to Sepharose Beads

CatalogNo: **ANT8117-S**

Size 200ul

Storage Store at 4 °C for frequent use

### Description

This Antagene antibody is immobilized via covalent binding of primary amino groups to N-hydroxysuccinimide (NHS)-activated sepharose beads. It is useful for immunoprecipitation assays.

### **EEA1 (ANT0088R) Rabbit mAb**

Formulation: 50% slurry in PBS pH 7.2 with 0.01mg NaN<sub>3</sub> preservative.

#### Host Species

- Rabbit

#### MW

- 162kD (Calculated)
- 162kD (Observed)

#### Reactivity

- Human, Mouse, Rat,

#### Isotype

- IgG, Kappa

#### Applications

- WB, IHC, IF, IP, ELISA

## **Recommended Dilution Ratios**

### **IP**

## **Basic Information**

#### Clonality

Monoclonal

Clone Number      ANT0088R

**Immunogen Information** Specificity

Endogenous

Gene name      EEA1  
Protein Name    Early endosome antigen 1

Organism	Gene ID	UniProt ID
Human	<a href="#">8411</a> ;	<a href="#">Q15075</a> ;
Mouse	<a href="#">216238</a> ;	<a href="#">Q8BL66</a> ;

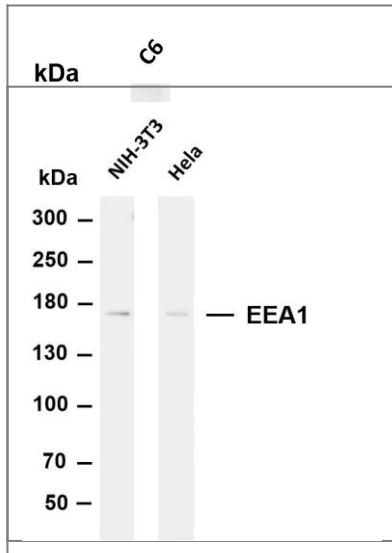
Cellular      Cytoplasm  
Localization

Tissue specificity    Aorta,Cervix carcinoma,Fetal brain cortex,Skeletal muscle,

Function      Disease:Antibodies against EEA1 are found in sera from patients with subacute cutaneous lupus erythematosus and other autoimmune diseases.,Domain:The FYVE-type zinc finger domain mediates interactions with phosphatidylinositol 3-phosphate.,Function:Binds phospholipid vesicles containing phosphatidylinositol 3-phosphate and participates in endosomal trafficking.,similarity:Contains 1 C2H2-type zinc finger.,similarity:Contains 1 FYVE-type zinc finger.,subunit:Homodimer. Binds STX6. Binds RAB5A, RAB5B, RAB5C and RAB22A that have been activated by GTP-binding.,

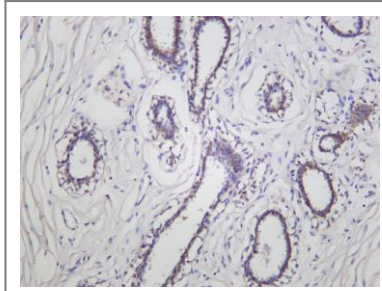
---

## Validation Data



Various whole cell lysates were separated by 4-20% SDS-PAGE, and the membrane was blotted with anti-EEA1 (ANT0088R) antibody. The HRPconjugated Goat anti-Rabbit IgG(H + L) antibody was used to detect the antibody. Lane 1: C6 Predicted band size: 162kDa  
Observed band size: 162kDa

Various whole cell lysates were separated by 4-8% SDS-PAGE, and the membrane was blotted with anti-EEA1 (ANT0088R) antibody. The HRPconjugated Goat anti-Rabbit IgG(H + L) antibody was used to detect the antibody. Lane 1: NIH-3T3 Lane 2: HeLa Predicted band size: 162kDa  
Observed band size: 162kDa



Human ductal breast carcinoma was stained with Anti-EEA1 (ANT0088R) rabbit antibody

For Research use only, not for diagnostics and clinical use  
Contact Antagene Inc Tel 1-866-964-2589 Email: [info@antageneinc.com](mailto:info@antageneinc.com)