



Mouse Monoclonal Antibody **Lactate Dehydrogenase** conjugated to Sepharose Beads

CatalogNo: **ANT8116-S**

Size 200ul

Storage Store at 4 °C for frequent use

### Description

This Antagene antibody is immobilized via covalent binding of primary amino groups to N-hydroxysuccinimide (NHS)-activated sepharose beads. It is useful for immunoprecipitation assays.

**Lactate Dehydrogenase (ANT0086R) Rabbit mAb**

Formulation: 50% slurry in PBS pH 7.2 with 0.01mg NaN<sub>3</sub> preservative.

### Host Species

- Rabbit
- Human, Mouse, Rat,

### Reactivity

- WB, IHC, IF, IP, ELISA

### Applications

### MW

- 37kD (Calculated)
- 37kD (Observed)

### Isotype

- IgG, Kappa

## Recommended Dilution Ratios

### IP

## Basic Information

### Clonality

Monoclonal

Clone Number      ANT0086R

**Immunogen Information** Specificity

Endogenous

**Gene name** LDHA;PIG19;LDHB;LDHC;LDH3;LDHX;  
**Protein Name** L-lactate dehydrogenase A chain;LDH-A;Cell proliferation-inducing gene 19 protein;LDH muscle subunit;LDH-M;Renal carcinoma antigen NY-REN-59;L-lactate dehydrogenase B chain;LDH-B;LDH heart subunit;LDH-H;Renal carcinoma antigen NY-REN-46;L-lactate dehydrogenase C chain;LDH-C;Cancer/testis antigen 32;CT32;LDH testis subunit;LDH-X;

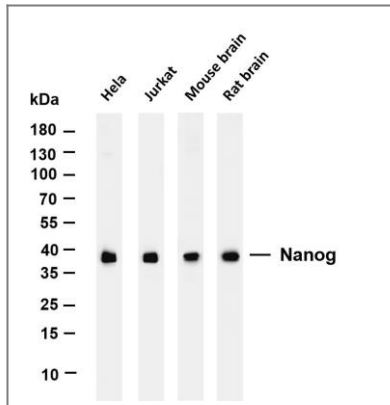
Organism	Gene ID	UniProt ID
Human	<a href="#">3939</a> ;	<a href="#">P00338</a> ; <a href="#">P07195</a> ; <a href="#">P07864</a> ; ;
Mouse		<a href="#">P06151</a> ;
Rat		<a href="#">P04642</a> ;

**Cellular Localization** Cytoplasmic, Membranous

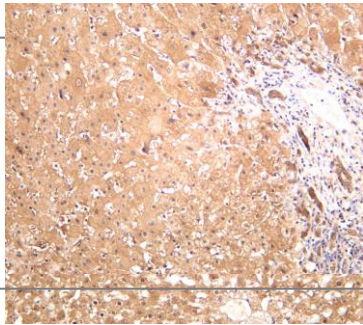
**Tissue specificity** Predominantly expressed in anaerobic tissues such as skeletal muscle and liver.

**Function** Catalytic activity:(S)-lactate + NAD(+) = pyruvate + NADH.,Caution:The sequence shown here is derived from an Ensembl automatic analysis pipeline and should be considered as preliminary data.,Disease:Defects in LDHA are a cause of exertional myoglobinuria.,online information:Lactate dehydrogenase entry,pathway:Fermentation; pyruvate fermentation to lactate; (S)-lactate from pyruvate: step 1/1.,similarity:Belongs to the LDH/MDH superfamily.,similarity:Belongs to the LDH/MDH superfamily. LDH family.,subunit:Homotetramer,

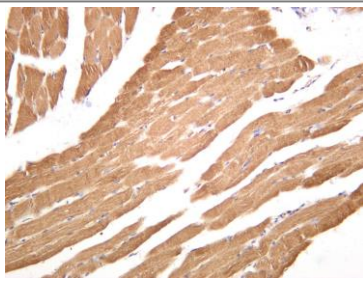
## Validation Data



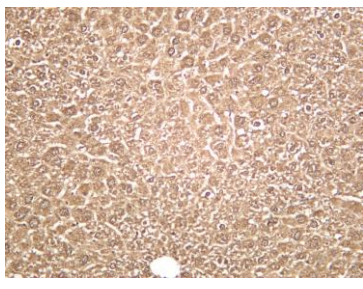
Various whole cell lysates were separated by 4-20% SDS-PAGE, and the membrane was blotted with anti-Lactate Dehydrogenase (ANT0086R) antibody. The HRP-conjugated Goat anti-Rabbit IgG(H + L) antibody was used to detect the antibody. Lane 1: HeLa Lane 2: Jurkat Lane 3: Mouse brain Lane 4: Rat brain Predicted band size: 37kDa Observed band size: 37kDa



Rat liver was stained with anti-Lactate Dehydrogenase (ANT0086R) rabbit antibody  
Human liver was stained with anti-Lactate Dehydrogenase (ANT0086R) rabbit antibody



Human skeletal muscle was stained with anti-Lactate Dehydrogenase (ANT0086R) rabbit antibody



Mouse liver was stained with anti-Lactate Dehydrogenase (ANT0086R) rabbit antibody

For Research use only, not for diagnostics and clinical use

Contact Antagene Inc Tel 1-866-964-2589

Email: [info@antageneinc.com](mailto:info@antageneinc.com)