



Mouse Monoclonal Antibody **Lactate Dehydrogenase** conjugated to Sepharose Beads

CatalogNo: **ANT8116-M**

Size 200ul

Storage Store at 4 °C for frequent use

Description

This Antagene antibody is immobilized by the covalent reaction of hydrazinonicotinamide-modified antibody with formylbenzamide-modified beads. It is useful for immunoprecipitation.

Lactate Dehydrogenase (ANT0086R) Rabbit mAb

Formulation: Each vial contains 1mg/ml Magnetic Bead in PBS, pH 7.2, 0.05mg ANaN3.

Host Species

- Rabbit
- Human, Mouse, Rat,

Reactivity

- WB, IHC, IF, IP, ELISA

Applications

MW

- 37kD (Calculated)
- 37kD (Observed)
- IgG, Kappa

Isotype

Recommended Dilution Ratios

IP

Basic Information

Clonality

Monoclonal

Clone Number ANT0086R

Immunogen Information Specificity

Endogenous

Gene name LDHA;PIG19;LDHB;LDHC;LDH3;LDHX;
Protein Name L-lactate dehydrogenase A chain;LDH-A;Cell proliferation-inducing gene 19 protein;LDH muscle subunit;LDH-M;Renal carcinoma antigen NY-REN-59;L-lactate dehydrogenase B chain;LDH-B;LDH heart subunit;LDH-H;Renal carcinoma antigen NY-REN-46;L-lactate dehydrogenase C chain;LDH-C;Cancer/testis antigen 32;CT32;LDH testis subunit;LDH-X;

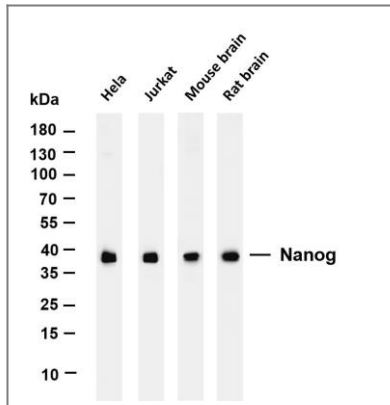
Organism	Gene ID	UniProt ID
Human	3939 ;	P00338 ; P07195 ; P07864 ; ;
Mouse		P06151 ;
Rat		P04642 ;

Cellular Localization Cytoplasmic, Membranous

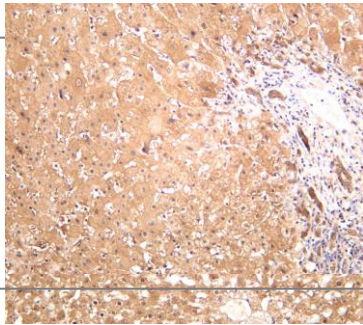
Tissue specificity Predominantly expressed in anaerobic tissues such as skeletal muscle and liver.

Function Catalytic activity:(S)-lactate + NAD(+) = pyruvate + NADH.,Caution:The sequence shown here is derived from an Ensembl automatic analysis pipeline and should be considered as preliminary data.,Disease:Defects in LDHA are a cause of exertional myoglobinuria.,online information:Lactate dehydrogenase entry,pathway:Fermentation; pyruvate fermentation to lactate; (S)-lactate from pyruvate: step 1/1.,similarity:Belongs to the LDH/MDH superfamily.,similarity:Belongs to the LDH/MDH superfamily. LDH family.,subunit:Homotetramer,

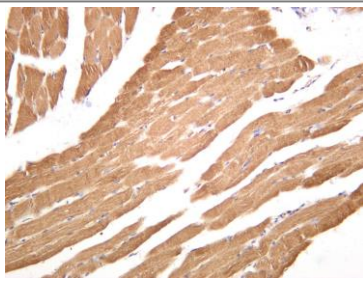
Validation Data



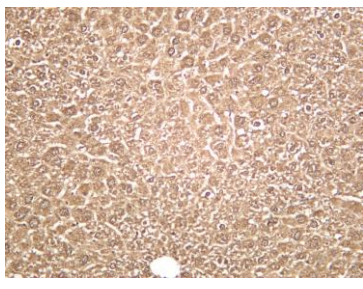
Various whole cell lysates were separated by 4-20% SDS-PAGE, and the membrane was blotted with anti-Lactate Dehydrogenase (ANT0086R) antibody. The HRP-conjugated Goat anti-Rabbit IgG(H + L) antibody was used to detect the antibody. Lane 1: HeLa Lane 2: Jurkat Lane 3: Mouse brain Lane 4: Rat brain Predicted band size: 37kDa Observed band size: 37kDa



Rat liver was stained with anti-Lactate Dehydrogenase (ANT0086R) rabbit antibody
Human liver was stained with anti-Lactate Dehydrogenase (ANT0086R) rabbit antibody



Human skeletal muscle was stained with anti-Lactate Dehydrogenase (ANT0086R) rabbit antibody



Mouse liver was stained with anti-Lactate Dehydrogenase (ANT0086R) rabbit antibody

For Research use only, not for diagnostics and clinical use

Contact Antagene Inc Tel 1-866-964-2589

Email: info@antageneinc.com