



Mouse Monoclonal Antibody **ATF6A** conjugated to Sepharose Beads

CatalogNo: **ANT8109-M**

Size 200ul

Storage Store at 4 °C for frequent use

Description

This Antagene antibody is immobilized by the covalent reaction of hydrazinonicotinamide-modified antibody with formylbenzamide-modified beads. It is useful for immunoprecipitation.

ATF6A (ANT0077R) Rabbit mAb

Formulation: Each vial contains 1mg/ml Magnetic Bead in PBS, pH 7.2, 0.05mg ANaN3.

Host Species

- Rabbit
- Human, Mouse, Rat,

Reactivity

- WB, IF, IP, ELISA

Applications

MW

- 75kD (Calculated)
- IgG, Kappa
- 100kD (Observed)

Isotype

Recommended Dilution Ratios

IP

Basic Information

Clonality	Monoclonal
Clone Number	ANT0077R

Immunogen Information

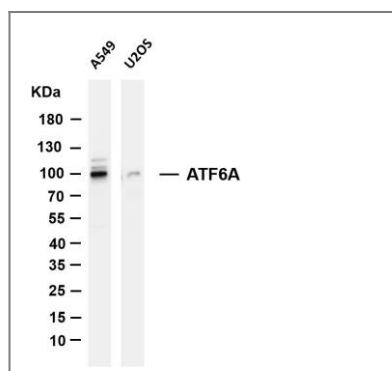
Specificity Endogenous

Target Information

Gene name ATF6
Protein Name ATF6A

	Organism	Gene ID	UniProt ID
	Human	22926;	P18850;
Cellular Localization	Cytoplasm		
Tissue specificity	Ubiquitous.		
Function	<p>Domain:The basic domain functions as a nuclear localization signal.,Domain:The basic leucine-zipper domain is sufficient for association with the NF-Y trimer and binding to ERSE.,Function:Transcription factor that acts during endoplasmic reticulum stress by activating unfolded protein response target genes. Binds DNA on the 5'-CCAC[GA]-3'half of the ER stress response element (ERSE) (5'-CCAAT-N(9)-CCAC[GA]-3') and of ERSE II (5'ATTGG-N-CCACG-3'). Binding to ERSE requires binding of NF-Y to ERSE. Could also be involved in activation of transcription by the serum response factor.,ANTM:During unfolded protein response an approximative 50 kDa fragment containing the cytoplasmic transcription factor domain is released by proteolysis. The cleavage seems to be performed sequentially by site-1 and site-2 proteases.,PTM:N-glycosylated.,PTM:Phosphorylated in vitro by MAPK14/P38MAPK.,similarity:Belongs to the bZIP family.,similarity:Belongs to the bZIP family. ATF subfamily.,similarity:Contains 1 bZIP domain.,subcellular location:Under ER stress the cleaved N-terminal cytoplasmic domain translocates into the nucleus.,subunit:Homodimer and heterodimer with ATF6-beta. The dimer interacts with the nuclear transcription factor Y (NF-Y) trimer through direct binding to NF-Y subunit C (NF-YC). Interacts also with the transcription factors GTF2I, YY1 and SRF.,tissue specificity:Ubiquitous.,</p>		

Validation Data



Various whole cell lysates were separated by 4-20% SDS-PAGE, and the membrane was blotted with anti-ATF6A (ANT0077R) antibody. The HRPconjugated Goat anti-Rabbit IgG(H + L) antibody was used to detect the antibody. Lane 1: A549 Lane 2: U2OS Predicted band size: 75Da Observed band size: 100kDa