



## Mouse Monoclonal Antibody **FABP4** conjugated to Sepharose Beads

CatalogNo: **ANT8108-S**

Size 200ul

Storage Store at 4 °C for frequent use

### Description

This Antagene antibody is immobilized via covalent binding of primary amino groups to N-hydroxysuccinimide (NHS)-activated sepharose beads. It is useful for immunoprecipitation assays.

### **FABP4 (ANT0076R) Rabbit mAb**

Formulation: 50% slurry in PBS pH 7.2 with 0.01mg NaN<sub>3</sub> preservative.

#### Host Species

- Rabbit
- Human, Mouse, Rat,

#### Reactivity

- WB, IHC, IF, IP, ELISA

#### Applications

#### MW

- 15kD (Calculated)
  - IgG, Kappa
- 15kD (Observed)

#### Isotype

## **Recommended Dilution Ratios**

### **IP**

## **Basic Information**

#### Clonality

Monoclonal

Clone Number      ANT0076R

**Immunogen Information** Specificity

Endogenous

Gene name      FABP4

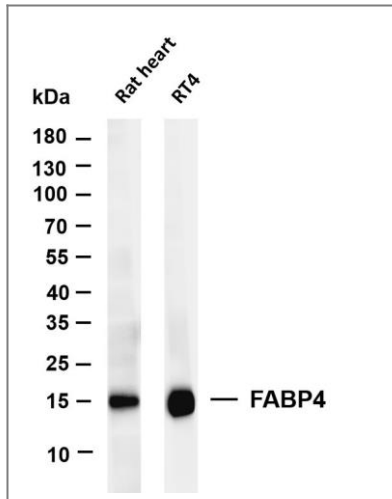
Protein Name      A-FABP

Organism	Gene ID	UniProt ID
Human	<a href="#">2167</a> ;	<a href="#">P15090</a> ;
Mouse	<a href="#">11770</a> ;	<a href="#">P04117</a> ;
Rat		<a href="#">P70623</a> ;

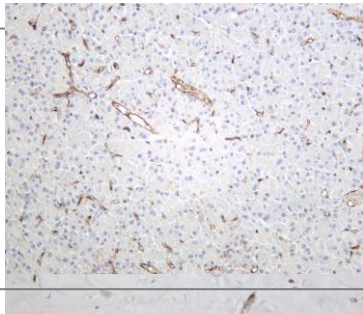
Cellular Localization      Cytoplasm

Function      Domain:Forms a beta-barrel structure that accommodates hydrophobic ligands in its interior.,Function:Lipid transport protein in adipocytes. Binds both long chain fatty acids and retinoic acid. Delivers long-chain fatty acids and retinoic acid to their cognate receptors in the nucleus.,similarity:Belongs to the calycin superfamily. Fatty-acid binding protein (FABP) family.,subcellular location:Depending on the nature of the ligand, a conformation change exposes a nuclear localization motif and the protein is transported into the nucleus. Subject to constitutive nuclear export.,subunit:Homodimer. Interacts with PPARG (By similarity). Monomer.,

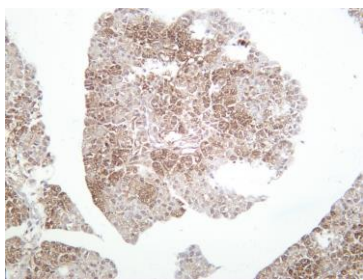
## Validation Data



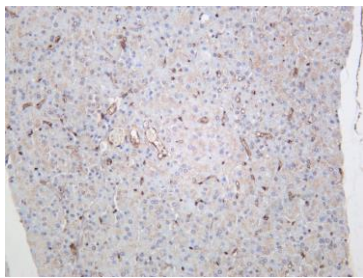
Various whole cell lysates were separated by 4-20% SDS-PAGE, and the membrane was blotted with anti-FABP4 (ANT0076R) antibody. The HRPconjugated Goat anti-Rabbit IgG(H + L) antibody was used to detect the antibody. Lane 1: Rat heart Lane 2: RT4 Predicted band size: 15kDa  
Observed band size: 15kDa



Human breast carcinoma was stained with Anti-FABP4 (ANT0076R) rabbit antibody  
Mouse pancreas was stained with Anti-FABP4 (ANT0076R) rabbit antibody



Rat pancreas was stained with Anti-FABP4 (ANT0076R) rabbit antibody



Rat pancreas was stained with anti-FABP4 (ANT0076R) rabbit antibody