

## Stromal Interaction Molecule 1 (ANT0072R) Rabbit mAb

CatalogNo: ANT8105 **Recombinant** 

Formulation: PBS,50%glycerol,0.05%Proclin 300,0.05%BSA  
Quantity : 100 ug/vial

### Host Species

- Rabbit
- Human,Mouse,Rat,

### Reactivity

- WB,IHC,IF,IP,ELISA

### Applications

### MW

- 77kD (Calculated)
  - IgG,Kappa
- 77kD (Observed)

### Isotype

## Recommended Dilution Ratios

IHC 1:200-1:1000

WB 1:1000-1:5000

IF 1:200-1:1000

ELISA 1:5000-1:20000

IP 1:50-1:200,

## Storage

**Storage\*** -15°C to -25°C/1 year(Do not lower than -25°C)

## Basic Information

**Clonality** Monoclonal

**Clone Number** ANT0072R

## Immunogen Information

**Sequence** Stromal interaction molecule 1

**Specificity** Endogenous

## Target Information

**Protein Name** STIM1 GOK

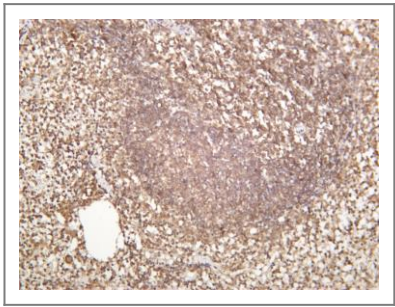
Organism	Gene ID	UniProt ID
Human	<a href="#">6786;</a>	<a href="#">Q13586;</a>
Mouse	<a href="#">20866;</a>	<a href="#">P70302;</a>
Rat	<a href="#">361618;</a>	<a href="#">P84903;</a>

**Cellular Localization** Membrane

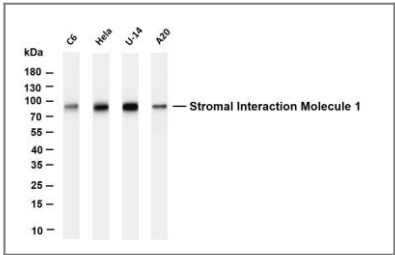
**Tissue specificity** Ubiquitously expressed in various human primary cells and tumor cell lines.

**Function** Plays a role in mediating store-operated Ca(2+) entry (SOCE), a Ca(2+) influx following depletion of intracellular Ca(2+) stores . Acts as Ca(2+) sensor in the endoplasmic reticulum via its EF-hand domain. Upon Ca(2+) depletion, translocates from the endoplasmic reticulum to the plasma membrane where it activates the Ca(2+) releaseactivated Ca(2+) (CRAC) channel subunit ORAI1 . Involved in enamel formation . Activated following interaction with STIMATE, leading to promote STIM1 conformational switch .

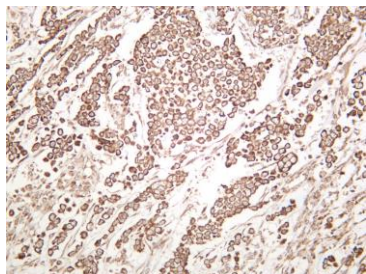
## Validation Data



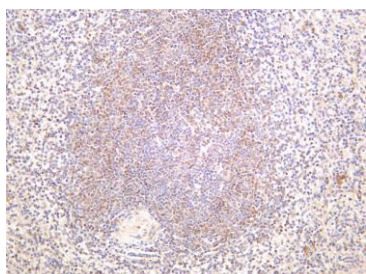
Mouse spleen was stained with anti-Stromal Interaction Molecule 1 (ANT0072R) rabbit antibody



Various whole cell lysates were separated by 4-20% SDS-PAGE, and the membrane was blotted with anti-Stromal Interaction Molecule 1 (ANT0072R) antibody. The HRP-conjugated Goat anti-Rabbit IgG(H + L) antibody was used to detect the antibody. Lane 1: C6 Lane 2: HeLa Lane 3: U-14 Lane 4: A20  
Predicted band size: 77kDa Observed band size: 77kDa



Human breast was stained with anti-Stromal Interaction Molecule 1 (ANT0072R) rabbit antibody



Human spleen was stained with anti-Stromal Interaction Molecule 1 (ANT0072R) rabbit antibody

For Research use only, not for diagnostics  
and clinical use

Contact Antagene Inc Tel 1-866-964-2589  
Email: [info@antageneinc.com](mailto:info@antageneinc.com)