



Mouse Monoclonal Antibody **Stromal Interaction Molecule 1** conjugated to Sepharose Beads

CatalogNo: **ANT8105-M**

Size 200ul

Storage Store at 4 °C for frequent use

Description

This Antagene antibody is immobilized by the covalent reaction of hydrazinonicotinamide-modified antibody with formylbenzamide-modified beads. It is useful for immunoprecipitation.

Stromal Interaction Molecule 1 (ANT0072R) Rabbit mAb

Formulation: Each vial contains 1mg/ml Magnetic Bead in PBS, pH 7.2, 0.05mg ANaN3.

Host Species

- Rabbit
- Human, Mouse, Rat,

Reactivity

- WB, IHC, IF, IP, ELISA

Applications

MW

- 77kD (Calculated)
 - IgG, Kappa
- 77kD (Observed)

Isotype

Recommended Dilution Ratios

IP

Basic Information

Clonality	Monoclonal
-----------	------------

Clone Number	ANT0072R
--------------	----------

Immunogen Information

Sequence Stromal interaction molecule 1

Specificity Endogenous

Target Information

Protein Name STIM1 GOK

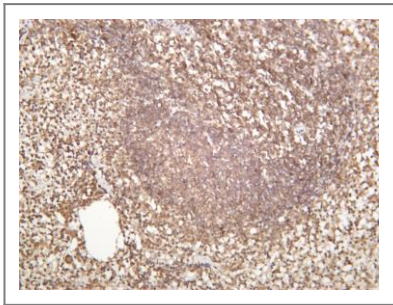
Organism	Gene ID	UniProt ID
Human	6786;	Q13586;
Mouse	20866;	P70302;
Rat	361618;	P84903;

Cellular Localization Membrane

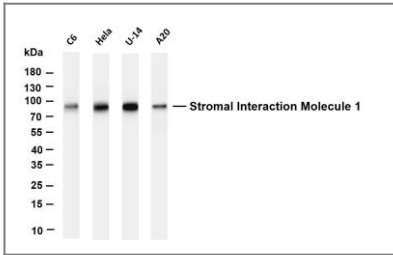
Tissue specificity Ubiquitously expressed in various human primary cells and tumor cell lines.

Function Plays a role in mediating store-operated Ca(2+) entry (SOCE), a Ca(2+) influx following depletion of intracellular Ca(2+) stores . Acts as Ca(2+) sensor in the endoplasmic reticulum via its EF-hand domain. Upon Ca(2+) depletion, translocates from the endoplasmic reticulum to the plasma membrane where it activates the Ca(2+) releaseactivated Ca(2+) (CRAC) channel subunit ORAI1 . Involved in enamel formation . Activated following interaction with STIMATE, leading to promote STIM1 conformational switch .

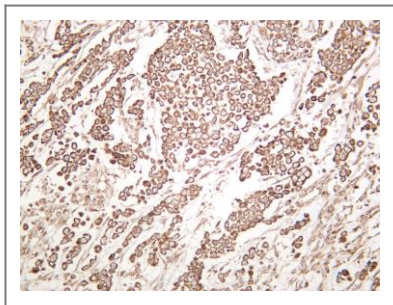
Validation Data



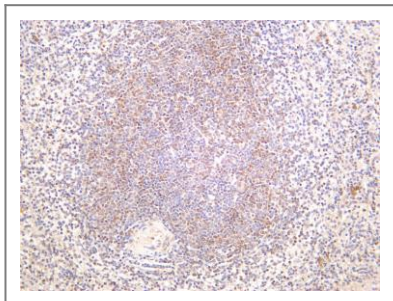
Mouse spleen was stained with anti-Stromal Interaction Molecule 1 (ANT0072R) rabbit antibody



Various whole cell lysates were separated by 4-20% SDS-PAGE, and the membrane was blotted with anti-Stromal Interaction Molecule 1 (ANT0072R) antibody. The HRP-conjugated Goat anti-Rabbit IgG(H + L) antibody was used to detect the antibody. Lane 1: C6 Lane 2: HeLa Lane 3: U-14 Lane 4: A20
Predicted band size: 77kDa Observed band size: 77kDa



Human breast was stained with anti-Stromal Interaction Molecule 1 (ANT0072R) rabbit antibody



Human spleen was stained with anti-Stromal Interaction Molecule 1 (ANT0072R) rabbit antibody

For Research use only, not for diagnostics
and clinical use

Contact Antagene Inc Tel 1-866-964-2589
Email: info@antageneinc.com