



Mouse Monoclonal Antibody **ATPB** conjugated to Sepharose Beads

CatalogNo: **ANT8103-M**

Size 200ul

Storage Store at 4 °C for frequent use

Description

This Antagene antibody is immobilized by the covalent reaction of hydrazinonicotinamide-modified antibody with formylbenzamide-modified beads. It is useful for immunoprecipitation.

ATPB (ANT0069R) Rabbit mAb

Formulation: Each vial contains 1mg/ml Magnetic Bead in PBS, pH 7.2, 0.05mg ANaN3.

Host Species

- Rabbit
- Human, Mouse, Rat,

Reactivity

- WB, IHC, IF, IP, ELISA

Applications

MW

- 57kD (Calculated)
 - IgG, Kappa
- 52kD (Observed)

Isotype

Recommended Dilution Ratios

IP

Basic Information

Clonality

Monoclonal

Immunogen Information Specificity

Endogenous

Gene name ATP5B ATPMB ATPSB
Protein Name ATP synthase subunit beta, mitochondrial (EC 3.6.3.14)

Organism	Gene ID	UniProt ID
Human	506;	P06576;
Mouse	11947;	P56480;
Rat	171374;	P10719;

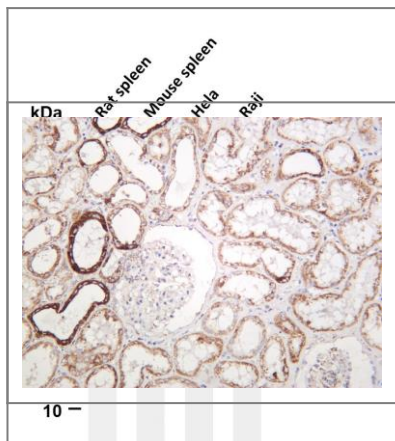
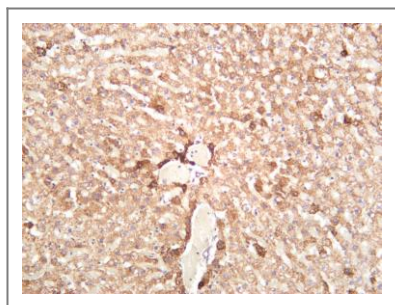
Cellular Mitochondrion inner membrane

Localization

Function Mitochondrial membrane ATP synthase (F(1)F(0) ATP synthase or Complex V) produces ATP from ADP in the presence of a proton gradient across the membrane which is generated by electron transport complexes of the respiratory chain. F-type ATPases consist of two structural domains, F(1) - containing the extramembraneous catalytic core, and F(0) containing the membrane proton channel, linked together by a central stalk and a peripheral stalk. During catalysis, ATP synthesis in the catalytic domain of F(1) is coupled via a rotary mechanism of the central stalk subunits to proton translocation. Subunits alpha and beta form the catalytic core in F(1). Rotation of the central stalk against the surrounding alpha(3)beta(3) subunits leads to hydrolysis of ATP in three separate catalytic sites on the beta subunits.

Validation Data

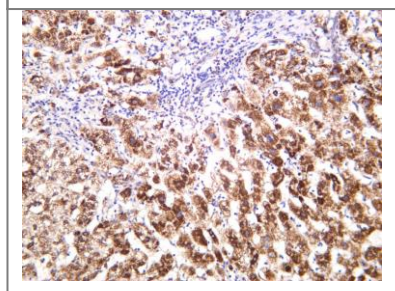
Rat liver was stained with anti-ATPB (ANT0069R) rabbit antibody



Various whole cell lysates were separated by 4-20% SDS-PAGE, and the membrane was blotted with anti-ATPB (ANT0069R) antibody. The HRPconjugated Goat anti-Rabbit IgG(H + L) antibody was used to detect the antibody. Lane 1: Rat spleen Lane 2: Mouse spleen Lane 3: HeLa Lane 4: Raji

Predicted band size: 57kDa Observed band size: 52kDa

Human kidney was stained with anti-ATPB (ANT0069R) rabbit antibody



Human liver was stained with anti-ATPB (ANT0069R) rabbit antibody

For Research use only, not for diagnostics and clinical use
Contact Antagene Inc Tel 1-866-964-2589 Email: info@antageneinc.com