



Mouse Monoclonal Antibody **Glutaminase C** conjugated to Sepharose Beads

CatalogNo: **ANT8102-S**

Size 200ul

Storage Store at 4 °C for frequent use

Description

This Antagene antibody is immobilized via covalent binding of primary amino groups to N-hydroxysuccinimide (NHS)-activated sepharose beads. It is useful for immunoprecipitation assays.

Glutaminase C (ANT0068R) Rabbit mAb

Formulation: 50% slurry in PBS pH 7.2 with 0.01mg NaN₃ preservative.

Host Species

- Rabbit
- Human, Mouse, Rat,

Reactivity

- WB, IHC, IF, IP, ELISA

Applications

MW

- 68kD (Calculated)
 - IgG, Kappa
- 68kD (Observed)

Isotype

Recommended Dilution Ratios

IP

Basic Information

Clonality

Monoclonal

Clone Number ANT0068R

Immunogen Information Specificity

Endogenous

Gene name GLS GLS1 KIAA0838
Protein Name GLSK

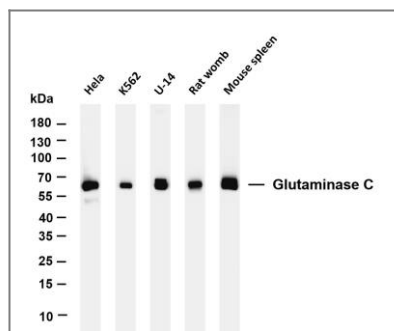
Organism	Gene ID	UniProt ID
Human	2744;	O94925;
Mouse	14660;	D3Z7P3;
Rat	24398;	P13264;

Cellular Cytoplasm
Localization

Tissue specificity Isoform 1 and isoform 3 are detected in brain cortex. Isoform 3 is highly expressed in astrocytoma, ganglioglioma and ependymoma. Isoform 1 is highly expressed in brain and kidney, but not detected in liver. Isoform 3 is highly expressed in heart and pancreas, detected at lower levels in placenta, lung, pancreas and kidney, but is not detected in liver. Isoform 2 is expressed in cardiac and skeletal muscle.

Function Catalytic activity:L-glutamine + H(2)O = L-glutamate + NH(3).,Function:Catalyzes the first reaction in the primary pathway for the renal catabolism of glutamine.,similarity:Belongs to the glutaminase family.,similarity:Contains 1 ANK repeat.,tissue specificity:KGA is expressed predominantly in brain and kidney but not in liver, GAC is expressed principally in cardiac muscle and pancreas but not in liver or brain, and GAM is expressed solely in cardiac and skeletal muscle.,

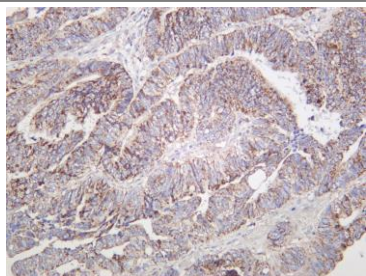
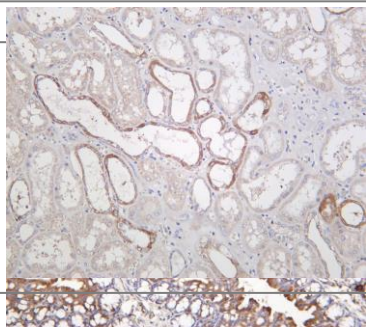
Validation Data



Various whole cell lysates were separated by 4-20% SDS-PAGE, and the membrane was blotted with anti-Glutaminase C (ANT0068R) antibody. The HRP-conjugated Goat anti-Rabbit IgG(H + L) antibody was used to detect the antibody. Lane 1: HeLa Lane 2: K562 Lane 3: U-14 Lane 4: Rat womb Lane 5:

Mouse spleen Predicted band size: 68kDa Observed band size: 68kDa

Mouse colon was stained with Anti-Glutaminase C (ANT0068R) rabbit antibody
Human kidney was stained with Anti-Glutaminase C (ANT0068R) rabbit antibody



Human colon carcinoma was stained with Anti-Glutaminase C (ANT0068R) rabbit antibody

For Research use only, not for diagnostics and clinical use
Contact Antagene Inc Tel 1-866-964-2589 Email: info@antageneinc.com