

KLF4 (ANT0067R) Rabbit mAb

CatalogNo: ANT8101 **Recombinant** 

Formulation: PBS,50%glycerol,0.05%Proclin 300,0.05%BSA
Quantity : 100 ug/vial

Host Species

- Rabbit
- Human,Mouse,Rat,

Reactivity

- WB,IHC,IF,IP,ELISA

Applications

MW

- 55kD (Calculated)
 - IgG,Kappa
- 60kD (Observed)

Isotype

Recommended Dilution Ratios

IHC 1:200-1000

WB 1:1000-5000

IF 1:200-1000

ELISA 1:5000-20000

IP 1:50-200

Storage

Storage* -15°C to -25°C/1 year(Do not lower than -25°C)

Basic Information

Clonality Monoclonal

Clone Number ANT0067R

Target Information

Endogenous

Gene nameKLF4
Protein NameKrueppel-like factor 4

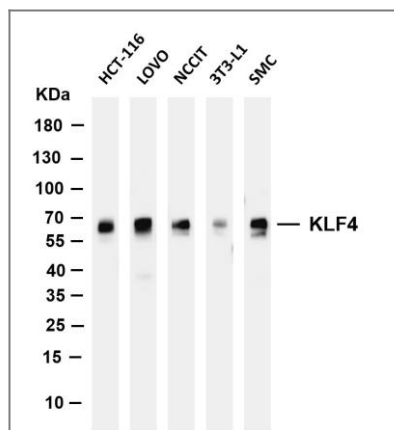
| Organism | Gene ID | UniProt ID |
|----------|-----------------------|-------------------------|
| Human | 9314; | O43474; |
| Mouse | | Q60793; |

CellularNuclear
Localization

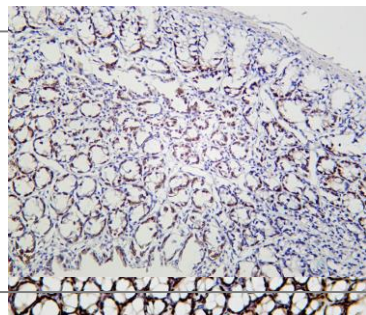
Tissue specificityCervix,Lung,Placenta,Substantia nigra,Tongue,

FunctionFunction:Transcription factor which acts as both an activator and repressor. Binds the CACCC core sequence. Binds to multiple sites in the 5'-flanking region of its own gene and can activate its own transcription. Required for establishing the barrier function of the skin and for postnatal maturation and maintenance of the ocular surface. Involved in the differentiation of epithelial cells and may also function in skeletal and kidney development.,similarity:Belongs to the krueppel C2H2-type zinc-finger protein family.,similarity:Contains 3 C2H2-type zinc fingers.,subunit:Interaction with the C-terminal domain of MUC1 enhances suppression of TP53/p53 transcription.,

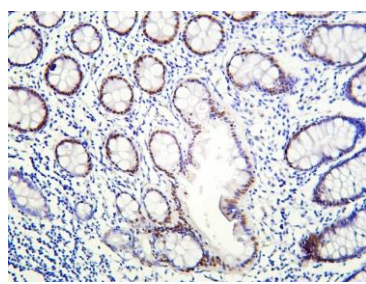
Validation Data



Various whole cell lysates were separated by 4-20% SDS-PAGE, and the membrane was blotted with anti-KLF4 (ANT0067R) antibody. The HRPconjugated Goat anti-Rabbit IgG(H + L) antibody was used to detect the antibody. Lane 1: HCT-116 Lane 2: LOVO Lane 3: NCCIT Lane 4: 3T3-L1 Lane 5: SMC Predicted band size: 55kDa Observed band size: 60kDa



Mouse colon was stained with Anti-KLF4 (ANT0067R) rabbit antibody
Rat colon was stained with Anti-KLF4 (ANT0067R) rabbit antibody



Human colon was stained with Anti-KLF4 (ANT0067R) rabbit antibody

For Research use only, not for diagnostics and clinical use
Contact Antagene Inc Tel 1-866-964-2589 Email: info@antageneinc.com