



Mouse Monoclonal Antibody **KLF4** conjugated to Sepharose Beads

CatalogNo: **ANT8101-M**

Size 200ul

Storage Store at 4 °C for frequent use

Description

This Antagene antibody is immobilized by the covalent reaction of hydrazinonicotinamide-modified antibody with formylbenzamide-modified beads. It is useful for immunoprecipitation.

KLF4 (ANT0067R) Rabbit mAb

Formulation: Each vial contains 1mg/ml Magnetic Bead in PBS, pH 7.2, 0.05mg ANaN3.

Host Species

- Rabbit
- Human, Mouse, Rat,

Reactivity

- WB, IHC, IF, IP, ELISA

Applications

MW

- 55kD (Calculated)
- IgG, Kappa
- 60kD (Observed)

Isotype

Recommended Dilution Ratios

IP

Basic Information

Clonality

Monoclonal

Clone Number ANT0067R

Immunogen Information Specificity

Endogenous

Gene name KLF4
Protein Name Krueppel-like factor 4

Organism	Gene ID	UniProt ID
Human	9314 ;	Q43474 ;
Mouse		Q60793 ;

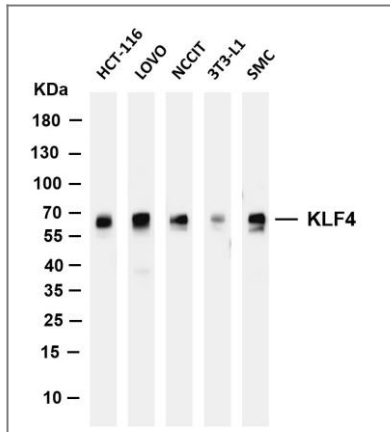
Cellular Nuclear
Localization

Tissue specificity Cervix,Lung,Placenta,Substantia nigra,Tongue,

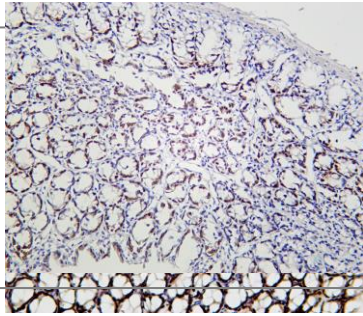
Function Function:Transcription factor which acts as both an activator and repressor. Binds the CACCC core sequence. Binds to multiple sites in the 5'-flanking region of its own gene and can activate its own transcription. Required for establishing the barrier function of the skin and for postnatal maturation and maintenance of the ocular surface. Involved in the differentiation of epithelial cells and may also function in skeletal and kidney development.,similarity:Belongs to the krueppel C2H2-type zinc-finger protein family.,similarity:Contains 3 C2H2-type zinc fingers.,subunit:Interaction with the C-terminal domain of MUC1 enhances suppression of TP53/p53 transcription.,



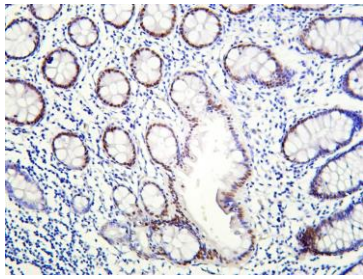
Validation Data



Various whole cell lysates were separated by 4-20% SDS-PAGE, and the membrane was blotted with anti-KLF4 (ANT0067R) antibody. The HRPconjugated Goat anti-Rabbit IgG(H + L) antibody was used to detect the antibody. Lane 1: HCT-116 Lane 2: LOVO Lane 3: NCCIT Lane 4: 3T3-L1 Lane 5: SMC Predicted band size: 55kDa Observed band size: 60kDa



Mouse colon was stained with Anti-KLF4 (ANT0067R) rabbit antibody
Rat colon was stained with Anti-KLF4 (ANT0067R) rabbit antibody



Human colon was stained with Anti-KLF4 (ANT0067R) rabbit antibody

For Research use only, not for diagnostics and clinical use
Contact Antagene Inc Tel 1-866-964-2589 Email: info@antageneinc.com