



Mouse Monoclonal Antibody **Cyclin E1** conjugated to Sepharose Beads

CatalogNo: **ANT8098-M**

Size 200ul

Storage Store at 4 °C for frequent use

Description

This Antagene antibody is immobilized by the covalent reaction of hydrazinonicotinamide-modified antibody with formylbenzamide-modified beads. It is useful for immunoprecipitation.

Cyclin E1 (ANT0064R) Rabbit mAb

Formulation: Each vial contains 1mg/ml Magnetic Bead in PBS, pH 7.2, 0.05mg ANaN3.

Host Species

- Rabbit
- Human, Mouse, Rat,

Reactivity

- WB, IHC, IF, IP, ELISA

Applications

MW

- 47kD (Calculated)
 - IgG, Kappa
- 47kD (Observed)

Isotype

Recommended Dilution Ratios

IP

Basic Information

Clonality	Monoclonal
-----------	------------

Clone Number	ANT0064R
--------------	----------

Endogenous

Target Information

Gene name CCNE1

Protein Name G1/S-specific cyclin-E1

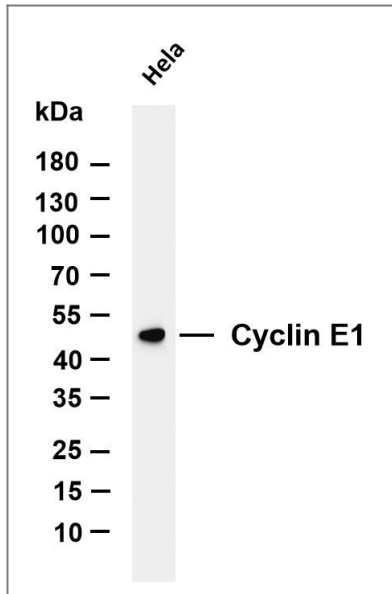
Organism	Gene ID	UniProt ID
Human	898;	P24864;
Mouse	12447;	Q61457;
Rat		P39949;

Cellular Localization Nuclear

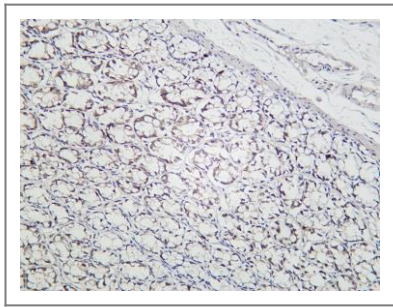
Tissue specificity Highly expressed in testis and placenta. Low levels in bronchial epithelial cells.

Function Function:Essential for the control of the cell cycle at the G1/S (start) transition.,ANTM:Phosphorylation of Thr-395 by GSK3 and of Ser-399 by CDK2 accelerates degradation via the ubiquitin proteasome pathway. Phosphorylated upon DNA damage, probably by ATM or ATR.,similarity:Belongs to the cyclin family. Cyclin E subfamily.,subunit:Interacts with a member of the CDK2/CDK protein kinases to form a serine/threonine kinase holoenzyme complex. The cyclin subunit imparts substrate specificity to the complex. Interacts with retinoblastoma binding protein 3 and retinoblastoma-like protein 1. Found in a complex with CDK2, CABLES1 and CCNA1 (By similarity). Part of a complex consisting of UHRF2, CDK2 and CCNE1.,tissue specificity:Highly expressed in testis and placenta. Low levels in bronchial epithelial cells.,

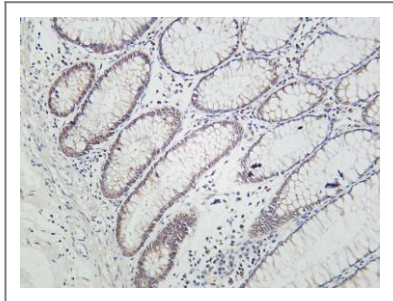
Validation Data



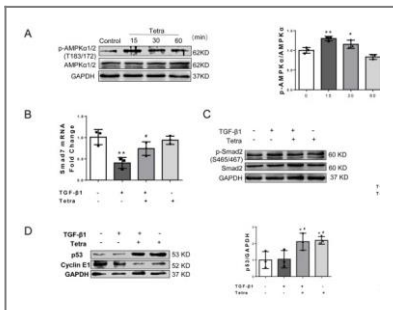
Various whole cell lysates were separated by 4-20% SDS-PAGE, and the membrane was blotted with anti-Cyclin E1(ANT0064R) antibody. The HRPconjugated Goat anti-Rabbit IgG(H + L) antibody was used to detect the antibody. Lane 1: HeLa Predicted band size: 47kDa Observed band size: 47kDa



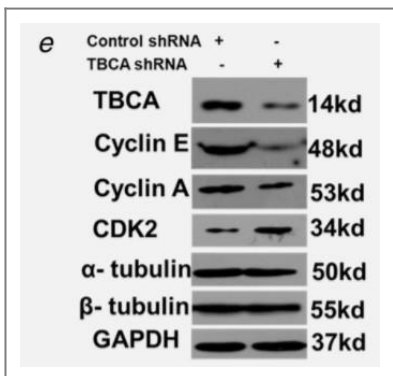
Rat colon was stained with Anti-Cyclin E1 (ANT0064R) rabbit antibody



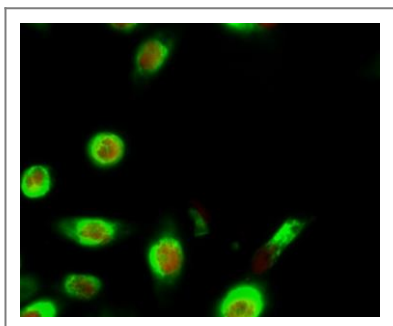
Human colon was stained with Anti-Cyclin E1 (ANT0064R) rabbit antibody



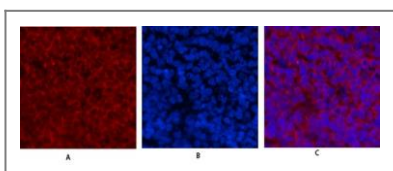
Gao, L., Wang, Ly., Liu, Zq. et al. TNAP inhibition attenuates cardiac fibrosis induced by myocardial infarction through deactivating TGF- β 1/Smads and activating P53 signaling pathways. Cell Death Dis 11, 44 (2020)



Zhang, Peng, et al. "Tubulin cofactor A functions as a novel positive regulator of ccRCC progression, invasion and metastasis." International journal of cancer 133.12 (2013): 2801-2811.



Immunofluorescence analysis of HeLa cell. 1,primary Antibody(red) was diluted at 1:200(4° overnight). β -Tubulin Monoclonal Antibody(5G3)(green) was diluted at 1:200(4° overnight). 2, Goat Anti Rabbit Alexa Fluor 594 Catalog:RS3611 was diluted at 1:1000(room temperature, 50min). Goat Anti Mouse Alexa Fluor 488 Catalog:RS3208 was diluted at 1:1000(room temperature, 50min).



Immunofluorescence analysis of rat-spleen tissue. 1,primary Antibody(red) was diluted at 1:200(4° overnight). 2, Cy3 labeled Secondary antibody was diluted at 1:300(room temperature, 50min).3, Picture B: DAPI(blue) 10min. Picture A:Target. Picture B: DAPI. Picture C: merge of A+B

For Research use only, not for diagnostics and clinical use
Contact Antagene Inc Tel 1-866-964-2589 Email: info@antageneinc.com