



## N Cadherin (ANT0063R) Rabbit mAb

CatalogNo: ANT8097 **Recombinant** 

Formulation: PBS,50%glycerol,0.05%Proclin 300,0.05%BSA  
Quantity : 100 ug/vial

### Host Species

- Rabbit

### MW

- 125kD (Calculated)  
130kD (Observed)

### Reactivity

- Human,Mouse,Rat,

### Isotype

- IgG,Kappa

### Applications

- WB,IHC,IF,IP,ELISA

## Recommended Dilution Ratios

IHC 1:500-1:2000

WB 1:1000-1:5000

IF 1:200-1:1000

ELISA 1:5000-1:20000

IP 1:50-1:200,

## Storage

**Storage\*** -15°C to -25°C/1 year(Do not lower than -25°C)

## Basic Information

**Clonality** Monoclonal

**Clone Number** ANT0063R

## Target Information

Endogenous

Gene name

CDH2 CDHN NCAD

Protein Name

Cadherin-2 (CDw325) (Neural cadherin) (N-cadherin) (CD antigen CD325)

Organism	Gene ID	UniProt ID
Human	<a href="#">1000</a> ;	<a href="#">P19022</a> ;
Mouse	<a href="#">12558</a> ;	<a href="#">P15116</a> ;
Rat	<a href="#">83501</a> ;	<a href="#">Q9Z1Y3</a> ;

Cellular

Membrane

Localization

Tissue specificity

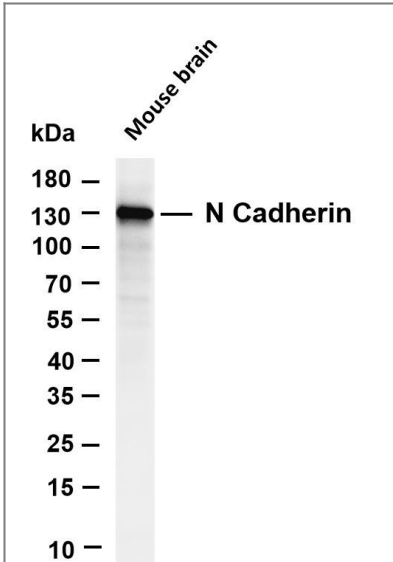
Brain,Epithelium,Liver,

Function

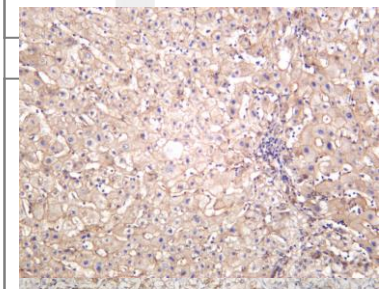
Function:Cadherins are calcium dependent cell adhesion proteins. They preferentially interact with themselves in a homophilic manner in connecting cells; cadherins may thus contribute to the sorting of heterogeneous cell types. CDH2 may be involved in neuronal recognition mechanism.,similarity:Contains 5 cadherin domains.,subunit:Interacts with CDCP1.,



# Validation Data



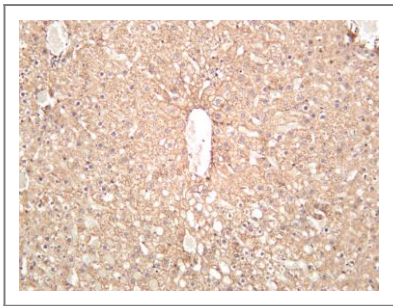
Various whole cell lysates were separated by 4-20% SDS-PAGE, and the membrane was blotted with anti-N Cadherin (ANT0063R) antibody. The HRPconjugated Goat anti-Rabbit IgG(H + L) antibody was used to detect the antibody. Lane 1: Mouse brain Predicted band size: 125kDa Observed band size: 130kDa



Human kidney carcinoma was stained with anti-N Cadherin (ANT0063R) rabbit antibody  
Human liver was stained with anti-N Cadherin (ANT0063R) rabbit antibody



Mouse liver was stained with anti-N Cadherin (ANT0063R) rabbit antibody



Rat liver was stained with anti-N Cadherin (ANT0063R) rabbit antibody

For Research use only, not for diagnostics and clinical use  
Contact Antagene Inc Tel 1-866-964-2589 Email: [info@antageneinc.com](mailto:info@antageneinc.com)