



## GM130 (ANT0059R) Rabbit mAb

CatalogNo: ANT8095 **Recombinant** 

Formulation: PBS,50%glycerol,0.05%Proclin 300,0.05%BSA  
Quantity : 100 ug/vial

### Host Species

- Rabbit

### MW

- 113kD (Calculated)  
130kD (Observed)

### Reactivity

- Human,Mouse,Rat,

### Isotype

- IgG,Kappa

### Applications

- WB,IHC,IF,IP,ELISA

## Recommended Dilution Ratios

IHC 1:200-1:1000

WB 1:2000-1:10000

IF 1:200-1:1000

ELISA 1:5000-1:20000

IP 1:50-1:200

## Storage

**Storage\*** -15°C to -25°C/1 year(Do not lower than -25°C)

## Basic Information

**Clonality** Monoclonal

**Clone Number** ANT0059R

## Target Information

Endogenous

Gene name        GOLGA2  
Protein Name     GM130

Organism	Gene ID	UniProt ID
Human	<a href="#">2801</a> ;	<a href="#">Q08379</a> ;

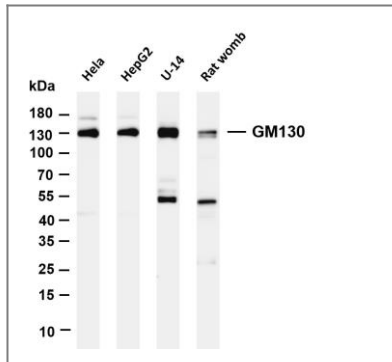
Cellular            Cytoplasm  
Localization

Tissue specificity Brain,Cervix,Colon adenocarcinoma,Epithelium,Heart,Hepatocyte,Liver,Placenta,Thymus,

Function            Domain:Extended rod-like protein with coiled-coil domains.,Function:Golgi auto-antigen; probably involved in maintaining cis-Golgi structure.,sequence Caution:Sequence differs from that shown after position 814 due to an internal deletion.,similarity:Belongs to the GOLGA2 family.,subunit:Part of a larger oligomeric complex. Interacts with p115 (By similarity). Interacts with RAB1B that has been activated by GTP-binding. Interacts with GORASP1/GRASP65 and ZFPL1.,

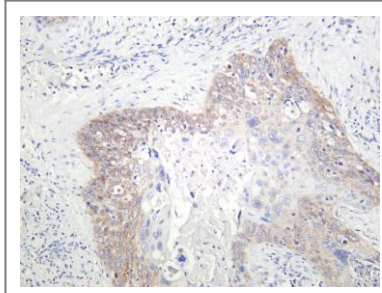


## Validation Data

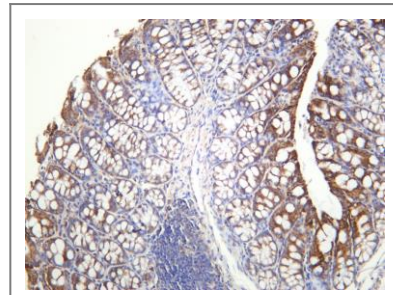
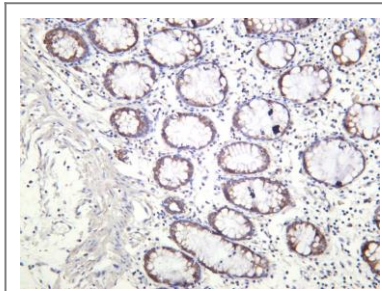


Various whole cell lysates were separated by 4-20% SDS-PAGE, and the membrane was blotted with anti-GM130 (ANT0059R) antibody. The HRPconjugated Goat anti-Rabbit IgG(H + L) antibody was used to detect the antibody. Lane 1: HeLa Lane 2: HepG2 Lane 3: U-14 Lane 4: Rat womb  
Predicted band size: 113kDa Observed band size: 130kDa

Human cervical carcinoma was stained with anti-GM130 (ANT0059R) rabbit antibody



Human colon was stained with anti-GM130 (ANT0059R) rabbit antibody



Mouse colon was stained with anti-GM130 (ANT0059R) rabbit antibody

For Research use only, not for diagnostics and clinical use  
Contact Antagene Inc Tel 1-866-964-2589 Email: [info@antageneinc.com](mailto:info@antageneinc.com)