



Mouse Monoclonal Antibody **GM130** conjugated to Sepharose Beads

CatalogNo: **ANT8095-M**

Size 200ul

Storage Store at 4 °C for frequent use

Description

This Antagene antibody is immobilized by the covalent reaction of hydrazinonicotinamide-modified antibody with formylbenzamide-modified beads. It is useful for immunoprecipitation.

GM130 (ANT0059R) Rabbit mAb

Formulation: Each vial contains 1mg/ml Magnetic Bead in PBS, pH 7.2, 0.05mg ANaN3.

Host Species

- Rabbit

MW

- 113kD (Calculated)
- 130kD (Observed)

Reactivity

- Human,Mouse,Rat,

Isotype

- IgG,Kappa

Applications

- WB,IHC,IF,IP,ELISA

Recommended Dilution Ratios

IP

Basic Information

Clonality

Monoclonal

Clone Number ANT0059R

Immunogen Information Specificity

Endogenous

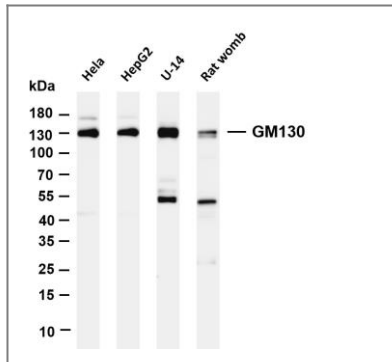
Gene name GOLGA2
Protein Name GM130

	Organism	Gene ID	UniProt ID
	Human	2801 ;	Q08379 ;
Cellular Localization	Cytoplasm		

Tissue specificity Brain,Cervix,Colon adenocarcinoma,Epithelium,Heart,Hepatocyte,Liver,Placenta,Thymus,

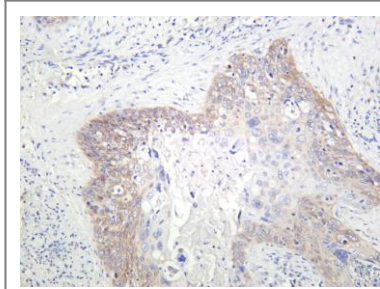
Function Domain:Extended rod-like protein with coiled-coil domains.,Function:Golgi auto-antigen; probably involved in maintaining cis-Golgi structure.,sequence Caution:Sequence differs from that shown after position 814 due to an internal deletion.,similarity:Belongs to the GOLGA2 family.,subunit:Part of a larger oligomeric complex. Interacts with p115 (By similarity). Interacts with RAB1B that has been activated by GTP-binding. Interacts with GORASP1/GRASP65 and ZFPL1.,

Validation Data

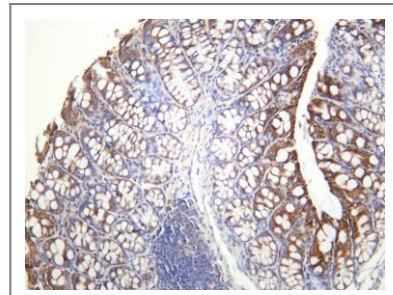
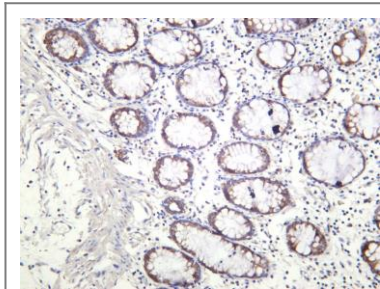


Various whole cell lysates were separated by 4-20% SDS-PAGE, and the membrane was blotted with anti-GM130 (ANT0059R) antibody. The HRPconjugated Goat anti-Rabbit IgG(H + L) antibody was used to detect the antibody. Lane 1: HeLa Lane 2: HepG2 Lane 3: U-14 Lane 4: Rat womb
Predicted band size: 113kDa Observed band size: 130kDa

Human cervical carcinoma was stained with anti-GM130 (ANT0059R) rabbit antibody



Human colon was stained with anti-GM130 (ANT0059R) rabbit antibody



Mouse colon was stained with anti-GM130 (ANT0059R) rabbit antibody

For Research use only, not for diagnostics and clinical use
Contact Antagene Inc Tel 1-866-964-2589 Email: info@antageneinc.com