



Mouse Monoclonal Antibody **Aurora A** conjugated to Sepharose Beads

CatalogNo: **ANT8087-S**

Size 200ul

Storage Store at 4 °C for frequent use

### Description

This Antagene antibody is immobilized via covalent binding of primary amino groups to N-hydroxysuccinimide (NHS)-activated sepharose beads. It is useful for immunoprecipitation assays.

**Aurora A (ANT0050R) Rabbit mAb**

Formulation: 50% slurry in PBS pH 7.2 with 0.01mg NaN<sub>3</sub> preservative.

### Host Species

- Rabbit
- Human,
- WB,IHC,IF,IP,ELISA

### Reactivity

### Applications

### MW

- 45kD (Calculated)
- IgG,Kappa
- 45kD (Observed)

### Isotype

## Recommended Dilution Ratios

### IP

## Basic Information

**Clonality** Monoclonal

**Clone Number** ANT0050R

Immunogen Information Specificity

Endogenous

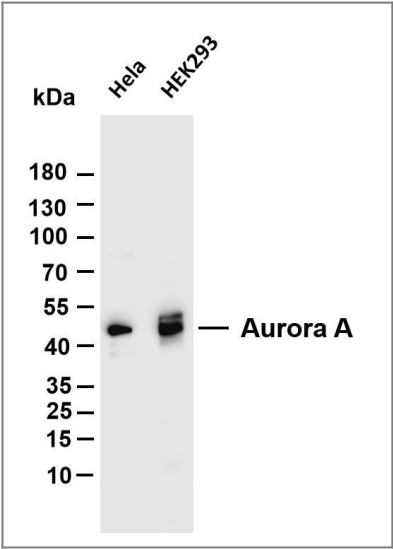
Gene name AURKA AIK AIRK1 ARK1 AURA AYK1 BTAK IAK1 STK15 STK6  
Protein Name Aurora A

Organism	Gene ID	UniProt ID
Human	<a href="#">6790</a> ;	<a href="#">O14965</a> ;
Mouse	<a href="#">20878</a> ;	<a href="#">P97477</a> ;
Rat		<a href="#">P59241</a> ;

Cellular Localization Membranous

Tissue specificity Highly expressed in testis and weakly in skeletal muscle, thymus and spleen. Also highly expressed in colon, ovarian, prostate, neuroblastoma, breast and cervical cancer cell lines.

Validation Data



Various whole cell lysates were separated by 4-20% SDS-PAGE, and the membrane was blotted with anti-Aurora A (ANT0050R) antibody. The HRPconjugated Goat anti-Rabbit IgG(H + L) antibody was used to detect the antibody. Lane 1: HeLa Lane 2: Mouse brain Lane 3: Rat brain Predicted band size: 45kDa Observed band size: 45kDa

)

For Research use only, not for diagnostics and clinical use  
Contact Antagene Inc Tel 1-866-964-2589 Email: [info@antageneinc.com](mailto:info@antageneinc.com)