



Mouse Monoclonal Antibody **SP1** conjugated to Sepharose Beads

CatalogNo: **ANT8086-S**

Size 200ul

Storage Store at 4 °C for frequent use

### Description

This Antagene antibody is immobilized via covalent binding of primary amino groups to N-hydroxysuccinimide (NHS)-activated sepharose beads. It is useful for immunoprecipitation assays.

**SP1 (ANT0049R) Rabbit mAb**

Formulation: 50% slurry in PBS pH 7.2 with 0.01mg NaN<sub>3</sub> preservative.

#### Host Species

- Rabbit

#### MW

- 100kD (Calculated)
- 100kD (Observed)

#### Reactivity

- Human,

#### Isotype

- IgG,Kappa

#### Applications

- WB,IHC,IF,IP,ELISA

## Recommended Dilution Ratios

### IP

## Basic Information

#### Clonality

Monoclonal

Clone Number      ANT0049R

**Immunogen Information** Specificity

Endogenous

Gene name      SP1  
Protein Name    Transcription factor Sp1

Organism	Gene ID	UniProt ID
Human	<a href="#">6667</a> ;	<a href="#">P08047</a> ;
Mouse	<a href="#">20683</a> ;	<a href="#">Q89090</a> ;
Rat	<a href="#">24790</a> ;	<a href="#">Q01714</a> ;

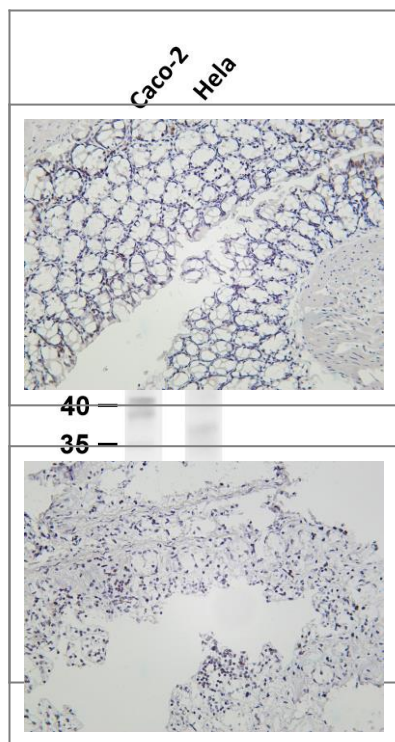
Cellular      Nuclear  
Localization

Tissue specificity Up-regulated in adenocarcinomas of the stomach (at protein level). Isoform 3 is ubiquitously expressed at low levels.

Function      Function: Binds to GC box promoters elements and selectively activates mRNA synthesis from genes that contain functional recognition sites. Can interact with G/C-rich motifs from serotonin receptor promoter.,ANTM: O-glycosylated; contains N-acetylglucosamine side chains.,similarity: Belongs to the Sp1 C2H2-type zinc-finger protein family.,similarity: Contains 3 C2H2-type zinc fingers.,subunit: Interacts with ATF7IP, ATF7IP2, POGZ, HCFC1, AATF and PHC2. Interacts with varicella-zoster virus IE62 protein and HIV-1 Vpr. Interacts with SV40 VP2/3 proteins. Interacts with SV40 major capsid protein VP1; this interaction leads to a cooperativity between the two proteins in DNA binding.,



## Validation Data

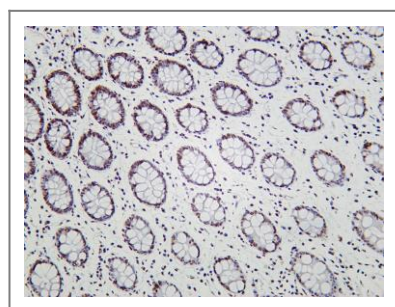


Various whole cell lysates were separated by 4-20% SDS-PAGE, and the membrane was blotted with anti-SP1 (ANT0049R) antibody. The HRPconjugated Goat anti-Rabbit IgG(H + L) antibody was used to detect the antibody. Lane 1: Caco-2 Lane 2: Hela treated with serum for 30 minutes

Predicted band size: 100kDa Observed band size: 100kDa

Mouse colon was stained with Anti-SP1 (ANT0049R) rabbit antibody

Rat colon was stained with Anti-SP1 (ANT0049R) rabbit antibody



Human colon was stained with Anti-SP1 (ANT0049R) rabbit antibody

For Research use only, not for diagnostics and clinical use  
Contact Antagene Inc Tel 1-866-964-2589 Email: [info@antageneinc.com](mailto:info@antageneinc.com)