

## IL18 (ANT0048R) Rabbit mAb

CatalogNo: ANT8085 **Recombinant** 

Formulation: PBS,50%glycerol,0.05%Proclin 300,0.05%BSA  
Quantity : 100 ug/vial

### Host Species

- Rabbit
- Human,
- WB,IHC,IF,IP,ELISA

### Reactivity

### Applications

### MW

- 22kD (Calculated)
  - IgG,Kappa
- 22kD (Observed)

### Isotype

## Recommended Dilution Ratios

IHC 1:200-1000

WB 1:1000-5000

IF 1:200-1000

ELISA 1:5000-20000

IP 1:50-200

## Storage

**Storage\*** -15°C to -25°C/1 year(Do not lower than -25°C)

## Basic Information

**Clonality** Monoclonal

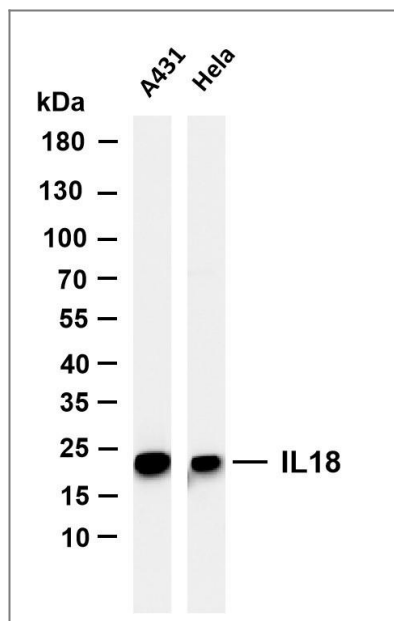
**Clone Number** ANT0048R

## Target Information

Endogenous

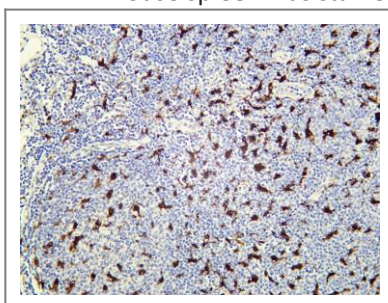
Gene name	IL18 IGIF IL1F4		
Protein Name	Interleukin-18 (IL-18) (Iboctadekin) (Interferon gamma-inducing factor) (IFN-gammainducing factor) (Interleukin-1 gamma) (IL-1 gamma)		
	Organism	Gene ID	UniProt ID
	Human	<a href="#">3606</a> ;	<a href="#">Q14116</a> ;
	Mouse		<a href="#">P70380</a> ;
	Rat		<a href="#">P97636</a> ;
Cellular Localization	Cytoplasm		
Tissue specificity	Liver,Peripheral blood,Urinary bladder,		
Function	Function:Augments natural killer cell activity in spleen cells and stimulates interferon gamma production in T-helper type I cells.,online information:Interleukin-1 entry,similarity:Belongs to the IL-1 family.,		

## Validation Data

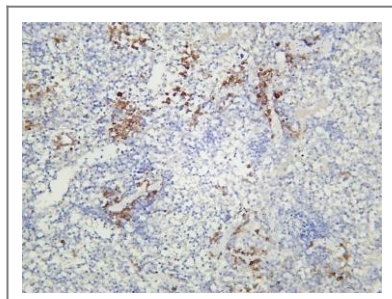


Various whole cell lysates were separated by 4-20% SDS-PAGE, and the membrane was blotted with anti-IL18 (ANT0048R) antibody. The HRPconjugated Goat anti-Rabbit IgG(H + L) antibody was used to detect the antibody. Lane 1: A431 Lane 2: HeLa Predicted band size: 22kDa Observed band size: 22kDa

Mouse spleen was stained with Anti-IL18 (ANT0048R) rabbit antibody



Human tonsil was stained with Anti-IL18 (ANT0048R)



rabbit antibody

For Research use only, not for diagnostics and clinical use  
Contact Antagene Inc Tel 1-866-964-2589 Email: [info@antageneinc.com](mailto:info@antageneinc.com)