



## Mouse Monoclonal Antibody **RIP** conjugated to Sepharose Beads

CatalogNo: **ANT8084-S**

Size 200ul

Storage Store at 4 °C for frequent use

### Description

This Antagene antibody is immobilized via covalent binding of primary amino groups to N-hydroxysuccinimide (NHS)-activated sepharose beads. It is useful for immunoprecipitation assays.

**RIP (ANT0047R) Rabbit mAb**

Formulation: 50% slurry in PBS pH 7.2 with 0.01mg NaN<sub>3</sub> preservative.

### Host Species

- Rabbit
- Human,
- WB,IHC,IF,IP,ELISA

### Reactivity

### Applications

### MW

- 76kD (Calculated)
- IgG,Kappa
- 76kD (Observed)

### Isotype

## Recommended Dilution Ratios

### IP

## Basic Information

### Clonality

Monoclonal

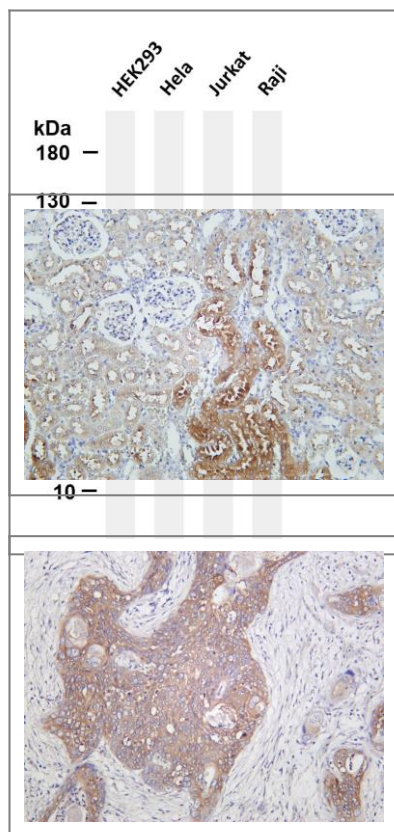
Clone Number      ANT0047R

**Immunogen Information** Specificity

Endogenous

Gene name	RIPK1 RIP RIP1		
Protein Name	Receptor-interacting serine/threonine-protein kinase 1 (Cell death protein RIP) (Receptorinteracting protein 1) (RIP-1) (Serine/threonine-protein kinase RIP)		
	Organism	Gene ID	UniProt ID
	Human	<a href="#">8737;</a>	<a href="#">Q13546;</a>
	Mouse		<a href="#">Q60855;</a>
Cellular Localization	Cytoplasmic, Membranous		
Tissue specificity	Leukemic T-cell,T-cell,Umbilical vein endothelial cell,		
Function	Catalytic activity:ATP + a protein = ADP + a phosphoprotein.,Function:Promotes apoptosis and activation of NF-kappa-B. Required for TNFRSF1A mediated activation of NF-kappaB.,ANTM:Autophosphorylated on serine and threonine residues.,PTM:Proteolytically cleaved by caspase-8 during TNF-induced apoptosis. Cleavage abolishes NF-kappa-B activation and enhances pro-apoptotic signaling through the TRADD-FADD interaction.,similarity:Belongs to the protein kinase superfamily. TKL Ser/Thr protein kinase family.,similarity:Contains 1 death domain.,similarity:Contains 1 protein kinase domain.,subunit:Binds to the death domain of TNFRSF6 and TRADD. Is recruited by TRADD to TNFRSF1A in a TNF-dependent process. Binds RIPK3, UBCE7IP1 isoform 3 (ZIN), EGFR, IKBKG, TRAF1, TRAF2 and TRAF3. Interacts with BNLF1. Interacts with SQSTM1 upon TNF-alpha stimulation. May interacts with MAVS/IPS1.,		

## Validation Data



Various whole cell lysates were separated by 4-20% SDS-PAGE, and the membrane was blotted with anti-RIP(ANT0047R) antibody. The HRP-conjugated Goat anti-Rabbit IgG(H + L) antibody was used to detect the antibody. Lane 1: HEK293 Lane 2: HeLa Lane 3: Jurkat Lane 4: Raji Predicted band size:

76kDa Observed band size: 76kDa

Rat kidney was stained with Anti-RIP (ANT0047R) rabbit antibody

Human cervical carcinoma was stained with Anti-RIP (ANT0047R) rabbit antibody

---

For Research use only, not for diagnostics and clinical use  
Contact Antagene Inc Tel 1-866-964-2589 Email: [info@antageneinc.com](mailto:info@antageneinc.com)