



Mouse Monoclonal Antibody **Catalase** conjugated to Sepharose Beads

CatalogNo: **ANT8083-S**

Size 200ul

Storage Store at 4 °C for frequent use

### Description

This Antagene antibody is immobilized via covalent binding of primary amino groups to N-hydroxysuccinimide (NHS)-activated sepharose beads. It is useful for immunoprecipitation assays.

**Catalase (ANT0046R) Rabbit mAb**

Formulation: 50% slurry in PBS pH 7.2 with 0.01mg NaN<sub>3</sub> preservative.

### Host Species

- Rabbit
- Human, Mouse, Rat,

### Reactivity

- WB, IHC, IF, IP, ELISA

### Applications

### MW

- 60kD (Calculated)
- 60kD (Observed)
- IgG, Kappa

### Isotype

## Recommended Dilution Ratios

### IP

## Basic Information

### Clonality

Monoclonal

Clone Number      ANT0046R

**Immunogen Information** Specificity

Endogenous

Gene name      CAT  
Protein Name    Catalase

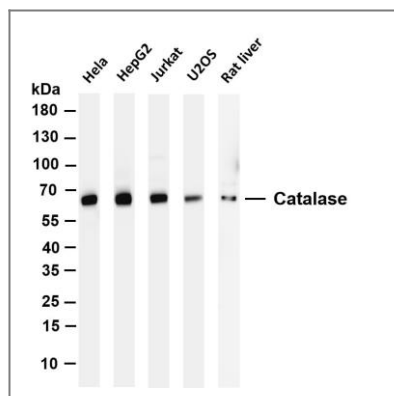
Organism	Gene ID	UniProt ID
Human	<a href="#">847</a> ;	<a href="#">P04040</a> ;
Mouse		<a href="#">P24270</a> ;

Cellular      Cytoplasm  
Localization

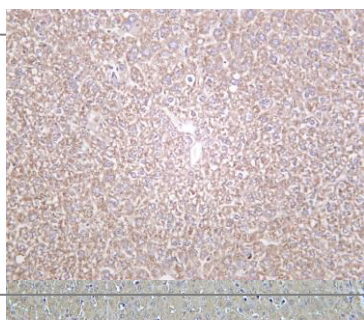
Tissue specificity Brain,Cajal-Retzius  
cell,Erythrocyte,Eye,Fibroblast,Kidney,Liver,Placenta,Platelet,Skin,Uterus,

Function      Catalytic activity:2 H(2)O(2) = O(2) + 2 H(2)O.,cofactor:Heme group.,cofactor:NADP.,Disease:Defects in CAT are the cause of acatalasia (ACATLAS) [MIM:115500]; also known as acatalasemia. This disease is characterized by absence of catalase activity in red cells and is often associated with ulcerating oral lesions.,Function:Occurs in almost all aerobically respiring organisms and serves to protect cells from the toxic effects of hydrogen peroxide. Promotes growth of cells including T-cells, B-cells, myeloid leukemia cells, melanoma cells, mastocytoma cells and normal and transformed fibroblast cells.,online information:Catalase entry,ANTM:The N-terminus is blocked.,similarity:Belongs to the catalase family.,subunit:Homotetramer.,

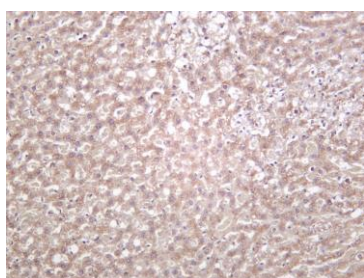
## Validation Data



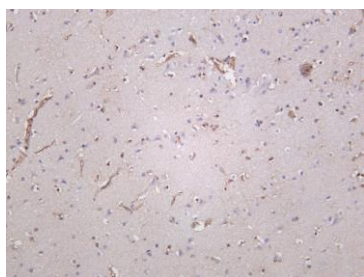
Various whole cell lysates were separated by 4-20% SDS-PAGE, and the membrane was blotted with anti-Catalase (ANT0046R) antibody. The HRPconjugated Goat anti-Rabbit IgG(H + L) antibody was used to detect the antibody. Lane 1: HeLa Lane 2: HepG2 Lane 3: Jurkat Lane 4: U2OS Lane 5: Rat liver Predicted band size: 60kDa Observed band size: 60kDa



Human liver was stained with Anti-Catalase (ANT0046R) rabbit antibody  
Mouse liver was stained with Anti-Catalase (ANT0046R) rabbit antibody



Rat liver was stained with Anti-Catalase (ANT0046R) rabbit antibody



Human brain was stained with Anti-Catalase (ANT0046R) rabbit antibody

For Research use only, not for diagnostics and clinical use  
Contact Antagene Inc Tel 1-866-964-2589 Email: [info@antageneinc.com](mailto:info@antageneinc.com)