



Mouse Monoclonal Antibody **Catalase** conjugated to Sepharose Beads

CatalogNo: **ANT8083-M**

Size 200ul

Storage Store at 4 °C for frequent use

Description

This Antagene antibody is immobilized by the covalent reaction of hydrazinonicotinamide-modified antibody with formylbenzamide-modified beads. It is useful for immunoprecipitation.

Catalase (ANT0046R) Rabbit mAb

Formulation: Each vial contains 1mg/ml Magnetic Bead in PBS, pH 7.2, 0.05mg ANaN3.

Host Species

- Rabbit
- Human, Mouse, Rat,

Reactivity

- WB, IHC, IF, IP, ELISA

Applications

MW

- 60kD (Calculated)
 - IgG, Kappa
- 60kD (Observed)

Isotype

Recommended Dilution Ratios

IP

Basic Information

Clonality

Monoclonal

Clone Number ANT0046R

Immunogen Information Specificity

Endogenous

Gene name CAT
Protein Name Catalase

Organism	Gene ID	UniProt ID
Human	847 ;	P04040 ;
Mouse		P24270 ;

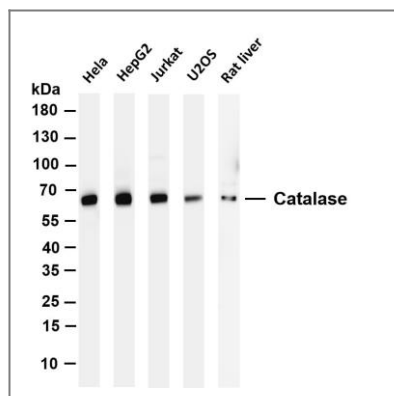
Cellular Cytoplasm
Localization

Tissue specificity Brain,Cajal-Retzius
cell,Erythrocyte,Eye,Fibroblast,Kidney,Liver,Placenta,Platelet,Skin,Uterus,

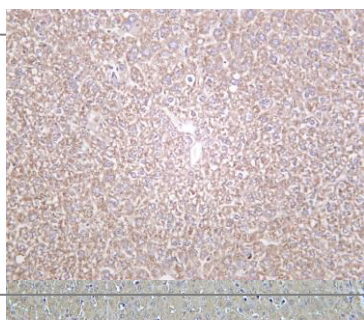
Function Catalytic activity:2 H(2)O(2) = O(2) + 2 H(2)O.,cofactor:Heme group.,cofactor:NADP.,Disease:Defects in CAT are the cause of acatalasia (ACATLAS) [MIM:115500]; also known as acatalasemia. This disease is characterized by absence of catalase activity in red cells and is often associated with ulcerating oral lesions.,Function:Occurs in almost all aerobically respiring organisms and serves to protect cells from the toxic effects of hydrogen peroxide. Promotes growth of cells including T-cells, B-cells, myeloid leukemia cells, melanoma cells, mastocytoma cells and normal and transformed fibroblast cells.,online information:Catalase entry,ANTM:The N-terminus is blocked.,similarity:Belongs to the catalase family.,subunit:Homotetramer.,



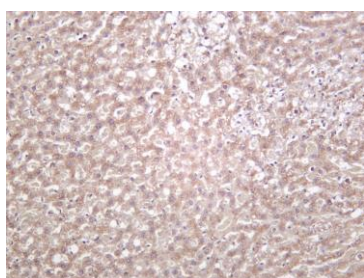
Validation Data



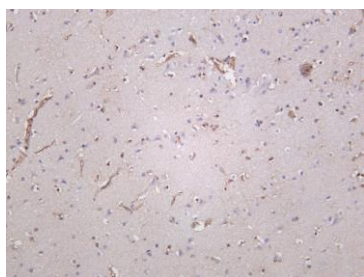
Various whole cell lysates were separated by 4-20% SDS-PAGE, and the membrane was blotted with anti-Catalase (ANT0046R) antibody. The HRPconjugated Goat anti-Rabbit IgG(H + L) antibody was used to detect the antibody. Lane 1: HeLa Lane 2: HepG2 Lane 3: Jurkat Lane 4: U2OS Lane 5: Rat liver Predicted band size: 60kDa Observed band size: 60kDa



Human liver was stained with Anti-Catalase (ANT0046R) rabbit antibody
Mouse liver was stained with Anti-Catalase (ANT0046R) rabbit antibody



Rat liver was stained with Anti-Catalase (ANT0046R) rabbit antibody



Human brain was stained with Anti-Catalase (ANT0046R) rabbit antibody

For Research use only, not for diagnostics and clinical use
Contact Antagene Inc Tel 1-866-964-2589 Email: info@antageneinc.com