

FXR1 (ANT0044R) Rabbit mAb

CatalogNo: ANT8081 **Recombinant** 

Formulation: PBS,50%glycerol,0.05%Proclin 300,0.05%BSA
Quantity : 100 ug/vial

Host Species

- Rabbit
- Human,Mouse,Rat,

Reactivity

- WB,IHC,IF,IP,ELISA

Applications

MW

- 70kD (Calculated)
 - IgG,Kappa
- 70kD (Observed)

Isotype

Recommended Dilution Ratios

IHC 1:200-1000

WB 1:1000-5000

IF 1:200-1000

ELISA 1:5000-20000

IP 1:50-200

Storage

Storage* -15°C to -25°C/1 year(Do not lower than -25°C)

Basic Information

Clonality Monoclonal

Clone Number ANT0044R

Target Information

Immunogen Information

Specificity

Endogenous

Gene nameFXR1

Protein Namefxr1

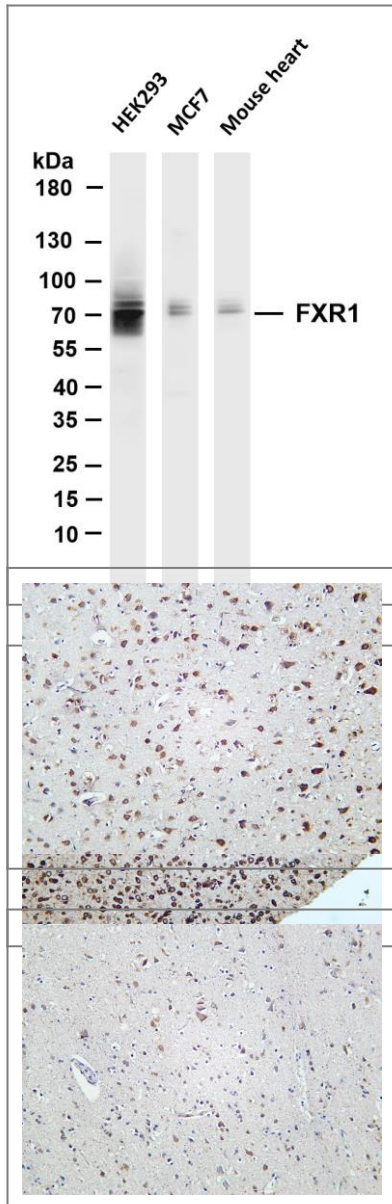
Organism	Gene ID	UniProt ID
Human	8087;	P51114;
Mouse	14359;	Q61584;
Rat	361927;	Q5XI81;

Cellular
LocalizationCytoplasm

Tissue specificityExpressed in all tissues examined including heart, brain, kidney and testis.



Validation Data



Various whole cell lysates were separated by 4-20% SDS-PAGE, and the membrane was blotted with anti-FXR1 (ANT0044R) antibody. The HRPconjugated Goat anti-Rabbit IgG(H + L) antibody was used to detect the antibody. Lane 1: HEK293 Lane 2: MCF7 Lane 3: Mouse heart Predicted band size: 70kDa Observed band size: 70kDa

Mouse brain was stained with Anti-FXR1 (ANT0044R) rabbit antibody
Rat brain was stained with Anti-FXR1 (ANT0044R) rabbit antibody

Human brain was stained with Anti-FXR1 (ANT0044R) rabbit antibody

For Research use only, not for diagnostics and clinical use
Contact Antagene Inc Tel 1-866-964-2589 Email: info@antageneinc.com