



Mouse Monoclonal Antibody **TMEM173** conjugated to Sepharose Beads

CatalogNo: **ANT8076-S**

Size 200ul

Storage Store at 4 °C for frequent use

Description

This Antagene antibody is immobilized via covalent binding of primary amino groups to N-hydroxysuccinimide (NHS)-activated sepharose beads. It is useful for immunoprecipitation assays.

TMEM173 (ANT0035R) Rabbit mAb

Formulation: 50% slurry in PBS pH 7.2 with 0.01mg NaN₃ preservative.

Host Species

- Rabbit
- Human, Mouse, Rat,

Reactivity

- WB, IHC, IF, IP, ELISA

Applications

MW

- 42kD (Calculated)
- 37kD (Observed)

Isotype

- IgG, Kappa

Recommended Dilution Ratios

Basic Information

Clonality	Monoclonal
Clone Number	ANT0035R

Immunogen Information Specificity

Endogenous

Gene name	TMEM173 ERIS MITA STING
Protein Name	Transmembrane protein 173

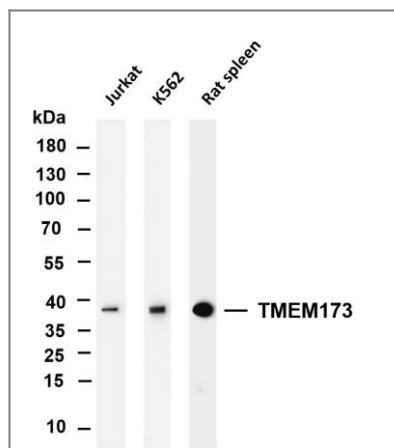
Organism	Gene ID	UniProt ID
Human	340061 ;	Q86WV6 ;
Mouse	72512 ;	Q3TBT3 ;

Cellular Localization	Cytoplasmic, Membranous
-----------------------	-------------------------

Tissue specificity Ubiquitously expressed. Expressed in skin endothelial cells, alveolar type 2 pneumocytes, bronchial epithelium and alveolar macrophages.

Function Function:Acts as a facilitator of innate immune signaling. Able to activate both NF-kappa-B and IRF3 transcription pathways to induce expression of type I interferon (IFN-alpha and IFN-beta) and exert a potent anti-viral state following expression. May be involved in translocon function, the translocon possibly being able to influence the induction of type I interferons. May be involved in transduction of apoptotic signals via its association with the major histocompatibility complex class II (MHC-II). Mediates death signaling via activation of the extracellular signal-regulated kinase (ERK) pathway.,ANTM:Phosphorylated on tyrosine residues upon MHC-II aggregation.,subunit:Associates with the MHC-II complex (By similarity). Interacts with DDX58/RIG-I, MAVS/VISA and SSR2.,tissue specificity:Ubiquitously expressed.,

Validation Data

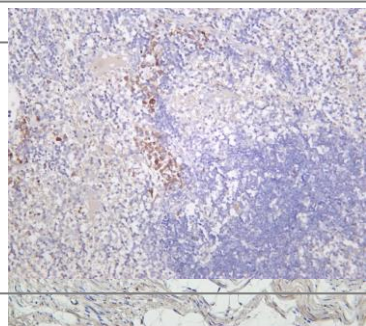


Various whole cell lysates were separated by 4-20% SDS-PAGE, and the membrane was blotted with anti-TMEM173 (ANT0035R) antibody. The HRPconjugated Goat anti-Rabbit IgG(H + L) antibody was used to detect the antibody. Lane 1: Jurkat Lane 2: K562 Lane 3: Rat spleen Predicted band size:

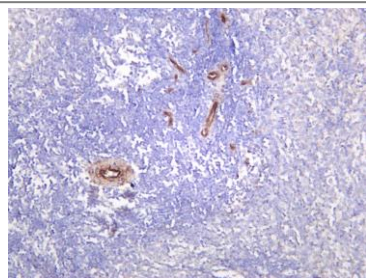
42kDa Observed band size: 37kDa

Rat colon was stained with Anti-TMEM173 (ANT0035R) rabbit antibody

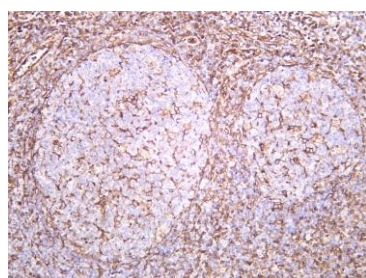
Mouse spleen was stained with Anti-TMEM173 (ANT0035R) rabbit antibody



Rat spleen was stained with Anti-TMEM173 (ANT0035R) rabbit antibody



Human tonsil was stained with Anti-TMEM173 (ANT0035R) rabbit antibody



For Research use only, not for diagnostics and clinical use
Contact Antagene Inc Tel 1-866-964-2589 Email: info@antageneinc.com