



## Mouse Monoclonal Antibody **ICAM1** conjugated to Sepharose Beads

CatalogNo: **ANT8074-M**

Size 200ul

Storage Store at 4 °C for frequent use

### Description

This Antagene antibody is immobilized by the covalent reaction of hydrazinonicotinamide-modified antibody with formylbenzamide-modified beads. It is useful for immunoprecipitation.

### **ICAM1 (ANT0033R) Rabbit mAb**

Formulation: Each vial contains 1mg/ml Magnetic Bead in PBS, pH 7.2, 0.05mg ANaN3.

#### Host Species

- Rabbit
- Human,
- WB,IHC,IF,IP,ELISA

#### Reactivity

#### Applications

#### MW

- 58kD (Calculated)
- IgG,Kappa
- 100kD (Observed)

#### Isotype

## **Recommended Dilution Ratios**

### **IP**

## **Basic Information**

#### Clonality

Monoclonal

Clone Number      ANT0033R

**Immunogen Information** Specificity

Endogenous

Gene name      ICAM1  
Protein Name    Intercellular adhesion molecule 1

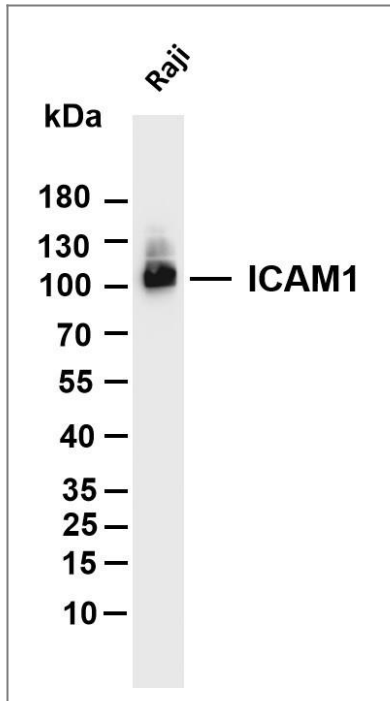
Organism	Gene ID	UniProt ID
Human	<a href="#">3383</a> ;	<a href="#">P05362</a> ;
Mouse		<a href="#">P13597</a> ;

Cellular      Membranous  
Localization

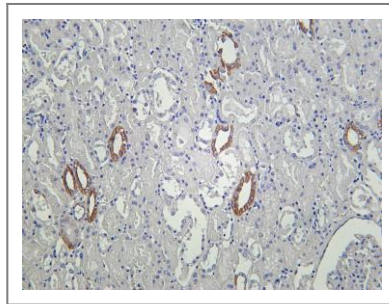
Tissue specificity Blood,Kidney,Liver,Melanoma,Plasma,

Function      Function:ICAM proteins are ligands for the leukocyte adhesion protein LFA-1 (integrin alphaL/beta-2). During leukocyte trans-endothelial migration, ICAM1 engagement promotes the assembly of endothelial apical cups through SGEF and RHOG activation. In case of rhinovirus infection acts as a cellular receptor for the virus.,online information:ICAM-1,online information:Icosahedral capsid structure,online information:Intercellular adhesion molecule entry,polymorphism:Homozygotes with ICAM1-Kalifi Met-56 seem to have an increased risk for cerebral malaria.,ANTM:Monoubiquitinated, which is promoted by MARCH9 and leads to endocytosis.,similarity:Belongs to the immunoglobulin superfamily. ICAM family.,similarity:Contains 5 Ig-like C2-type (immunoglobulin-like) domains.,subunit:Homodimer (Probable). Interacts with human herpesvirus 8 MIR2 protein (Probable). Interacts with MUC1 and promotes cell aggregation in epithelial cells. Interacts with SGEF. Binds to coxsackievirus A21 capsid proteins and acts as a receptor for this virus.,

## Validation Data



Various whole cell lysates were separated by 4-20% SDS-PAGE, and the membrane was blotted with anti-ICAM1 (ANT0033R) antibody. The HRPconjugated Goat anti-Rabbit IgG(H + L) antibody was used to detect the antibody. Lane 1: Raji Predicted band size: 58kDa Observed band size: 100kDa



(ANT0033R) rabbit antibody

Human kidney was stained with Anti-ICAM1

For Research use only, not for diagnostics and clinical use  
Contact Antagene Inc Tel 1-866-964-2589 Email: [info@antageneinc.com](mailto:info@antageneinc.com)